

News & Reviews

March 4, 2026

Town of Pittsford - a
Clean Energy and Climate
Smart Community

See listings below for

Upcoming Activities, Town Board Meetings & Community Meetings

Supervisor Saturday
with Bill Smith

9:00 - 10:00am
Pittsford Community Library

*Come and join the
conversation!*

SUPERVISOR SATURDAY WITH BILL SMITH AT THE LIBRARY

Town Supervisor Bill Smith will host his next community open house meeting this **Saturday, March 7**, from **9:00 to 10:00am** at the **Pittsford Community Library**. If you have questions, ideas, or comments for Supervisor Smith, please stop by and join the conversation.

This casual open house will take place in the Fisher Meeting Room. Supervisor Saturday provides residents who can't visit Supervisor Smith during the work week an opportunity to speak with him directly. Come and discuss what

matters most to you! Drop in – no registration required. The Pittsford Community Library is located at 24 State Street.

Supervisor Smith maintains an open-door policy and encourages residents to visit Town Hall by appointment during regular business hours, Monday through Friday. As always, he is available by phone at 248-6220 and by email at wsmith@townofpittsford.org.

SPRING FORWARD THIS SUNDAY – DAYLIGHT SAVING TIME BEGINS MARCH 8

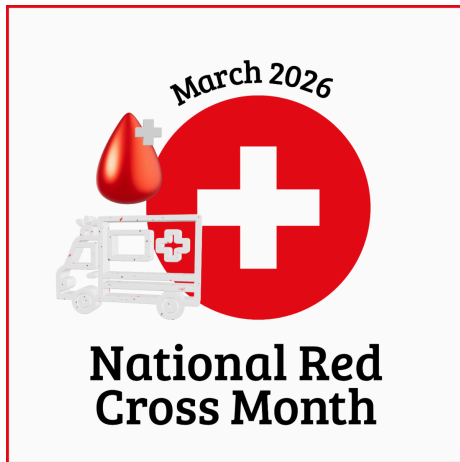
Don't forget to set your clocks ahead one hour before you go to bed this Saturday night! Daylight Saving Time begins at 2:00am on Sunday, March 8, meaning we "spring forward" and gain more evening daylight.

While you're changing your clocks, it's also a good time to:

- Test smoke and carbon monoxide detectors
- Replace batteries if needed
- Review your family's emergency plans



Enjoy the extra light of day and know that spring is on its way!



BLOOD DRIVE AT THE LIBRARY THIS FRIDAY, MARCH 6

March is National Red Cross Month, and there is a critical need for blood donors nationwide, due in part to a particularly harsh winter that has led to canceled drives and reduced collections.

The Town of Pittsford will host an American Red Cross blood drive this **Friday, March 6**, from **10:00am to 3:00pm** at the **Pittsford Community Library** in the Fisher Meeting Room, 24 State Street in the Village of Pittsford. Donors who give in March will receive a \$15 gift card by email.

Eligible type O, B, or A donors are encouraged to consider making a Power Red donation, which collects concentrated red blood cells, the most transfused blood component.

Many people do not donate simply because they are unfamiliar with what the process is actually like. Fear of needles, fainting, or safety concerns, along with misconceptions about eligibility, often prevent first-time donors from taking that first step. In reality, the actual blood draw takes just 7 to 10 minutes, the equipment is sterile and single-use, and most healthy adults are eligible. Often, the most time-consuming part of the visit is completing the health questionnaire.

To help demystify the experience, I (Holly) recently gave blood at our Library drive and documented exactly what happens, from check-in and screening to the snack table afterward. You can [read the full firsthand account on the Town website](#) and see just how simple and safe the process really is.

Streamline your visit and save up to 15 minutes by completing your pre-donation reading and health history online at RedCrossBlood.org/RapidPass on the day of your appointment.

If you are eligible and feeling well, please make an appointment today using the Red Cross Blood Donor App, visiting RedCrossBlood.org, or calling 800-RED-CROSS.

“THE FLOWER THIEF” STORY STROLL COMING MARCH 9–15 AT THE SPIEGEL COMMUNITY CENTER

Our next Story Stroll takes place Monday, March 9, through Sunday, March 15. Families are invited to enjoy a leisurely walk inside the Spiegel Community Center while reading “**The Flower Thief**” by Alice Hemming.

“**The Flower Thief**” is a charming children’s picture book about friendship, curiosity, and the surprises that bloom when we least expect them. As flowers begin to brighten the landscape, one



character notices blossoms mysteriously disappearing. Determined to solve the mystery, the story unfolds with gentle humor and heart, ultimately sharing themes of understanding, kindness, and appreciation for the natural world.

After completing your Story Stroll, stop by the Spiegel Community Center front desk to pick up a themed craft pack to take home. Craft packs are available Monday through Saturday from 8:00am to 5:00pm and Sunday from 10:00am to 5:00pm, while supplies last.

The Town's Spiegel Community Center is located at 35 Lincoln Avenue. To learn more about our programs, activities and services, [click here to visit the Town](#) of Pittsford's Recreation page on the Town website, [email the Recreation Department here](#), or call the Spiegel Community Center at 585-248-6280.



**PITTSFORD
COMMUNITY
LIBRARY**

Upcoming Events & Programs at the Library!

For a complete schedule of programs & events at the Pittsford Community Library, please visit the Library's online calendar!
<https://calendar.libraryweb.org/calendar/Pittsford/>

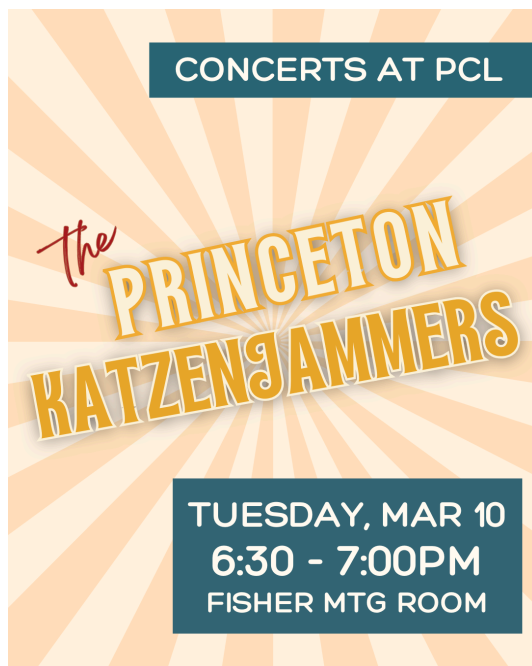


PCL PRESENTS

OSCAR'S PREVIEW Party

popcorn &
mocktails
provided

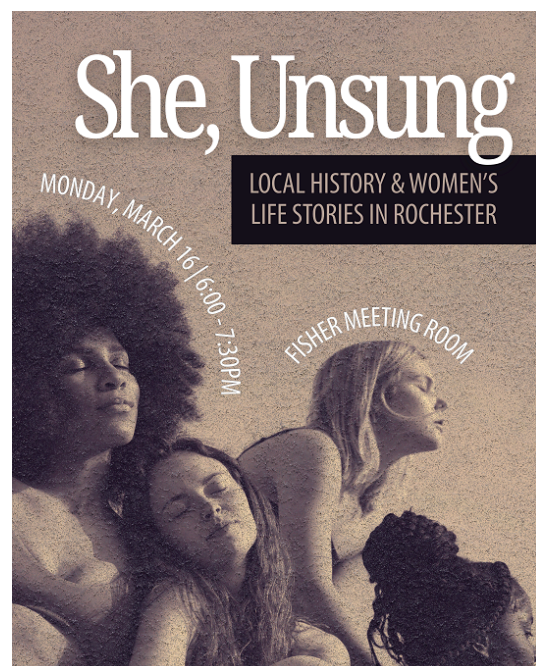
MONDAY MARCH 9TH
6:00 - 7:30PM | FISHER MTG RM



CONCERTS AT PCL

The PRINCETON KATZENJAMMERS

TUESDAY, MAR 10
6:30 - 7:00PM
FISHER MTG ROOM



She, Unsung

LOCAL HISTORY & WOMEN'S
LIFE STORIES IN ROCHESTER

MONDAY, MARCH 16 | 6:00 - 7:30PM

FISHER MEETING ROOM

The Pittsford Community Library continues to offer an engaging mix of educational, cultural, and community-centered programs for residents of all ages this spring!

March is here, and it's party time at Pittsford Library! Join us at our [Oscars Preview Party](#) on Monday, March 9. On Tuesday, March 10, enjoy an evening of Jazz with [The Princeton Katzenjammers](#).

As we continue to celebrate Women's History Month in March, join us on March 16 for [She, Unsung](#), bringing together local history and women's life stories from the Rochester area.



**Pruning
Trees &
Shrubs**

SUNDAY, MARCH 8
2:00 - 3:00PM
FISHER MTG ROOM
- REGISTRATION RECOMMENDED -

CORNELL COOP SERIES



**deer-resistant
plants**

TUES, MARCH 10
6:30-7:30PM

ZOOM - REGISTRATION REQUIRED



Plant a Tree!
with **Neighborhood Forest**

free!

Kids in pre-k through grade 12 can receive a free tree to plant in their yard through the annual **Neighborhood Forest** program!

Register at bit.ly/pclcalendar by March 12!

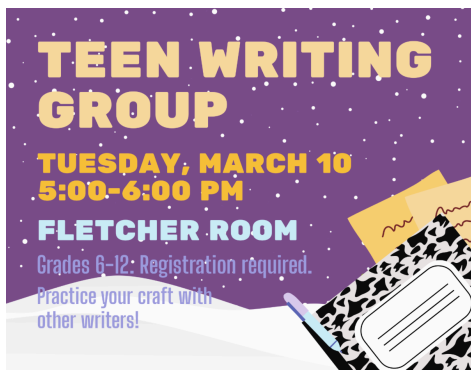


**This Talk is Probably
AI**

SATURDAY, MARCH 14
2:00 - 3:00PM
FISHER MTG ROOM
REGISTRATION RECOMMENDED

On March 8, learn how to selectively remove unwanted branches, improve a tree's structure, and direct new, healthy growth in [Pruning Trees & Shrubs](#). And if you've been watching the deer slowly browse through your prized landscaping, on March 10, join us on Zoom to learn about [Deer Resistant Plants](#). Teens and younger are invited to pick up a tree sapling from the Children's Room, March 1 through 12. [Make sure to register!](#)

For a change of pace, learn about the big headline of the moment – Artificial Intelligence in [This Talk is Probably AI](#).



Are you a teen who likes to write? Or maybe you have a big paper due and need focused time to work on it? Come to our [Teen Writing Group](#) on March 10! Work at your own pace, and sharing is always optional. Make an evening of it by going to [Teen Community Service](#) too! We'd love to see you.

For a full article detailing further information and registration details about these programs, please

visit: <https://www.townofpittsford.org/news/upcoming-programs-pittsford-community-library-2>.

The Pittsford Community Library is located at 24 State Street. To learn more about upcoming Library programs, [sign up for the Library's weekly eNewsletter](#), visit the [Library's online program calendar](#), or call (585) 248-6275. For complete Library information, including hours of operation, visit www.townofpittsford.org/library.

POPPIN' WITH THE GRANDKIDS – A COMMUNITY MOVIE NIGHT TO REMEMBER

Grab the grandkids and join us for a “reel” good time at *Poppin' with the Grandkids*, a fun and laid-back community movie night designed to bring generations together through the magic of movies.

Whether you're attending with grandchildren, grandparents, family members, or friends, everyone is welcome. Bring your whole crew and settle in for a special evening filled with laughter, popcorn, and great company. Light refreshments will be served, and you're welcome to bring your own **nut-free snacks** to enjoy during the show.



Poppin' with the Grandkids will be held on **Thursday, March 12, 2026**, from **6:30 to 9:00pm** at the **Spiegel Community Center**, VanHuysen Room 107. For additional information, call (585) 248-6280.

Please note that each participant must be registered for this program. Register online here: <https://bit.ly/4sdvyDa>

The Town's Spiegel Community Center is located at 35 Lincoln Avenue. To learn more about our programs, activities and services, [click here to visit the Town](#) of Pittsford's Recreation page on the Town website, [email the Recreation Department here](#), or call the Spiegel Community Center at 585-248-6280.

SENIORS MOVIE MATINEE MARCH 12: FLY ME TO THE MOON

Reservations required by this Sunday, March 9

Seniors, join us on **Thursday, March 12**, for a free morning movie matinee featuring “Fly Me to the Moon” – the 2024 American historical romantic comedy-drama starring Scarlett Johansson and Channing Tatum! Enjoy a complimentary selection of coffee,



breakfast pastries, and popcorn while you watch the film, then stay afterward for an optional lunch of Salvatore's pizza, salad, and dessert.

The movie begins at **10:30am** in the VanHuysen Community Room (Room 107), at the Spiegel Community Center. The movie and snacks are free; the optional lunch costs \$6.00 per person. To plan accordingly, **please register for the movie and the optional lunch by March 9** by calling (585) 248-6235.

“Fly Me to the Moon” is a 2024 American historical romantic comedy-drama directed by Greg Berlanti and written by Rose Gilroy. Set against the backdrop of NASA’s launch director, Cole Davis (played by Channing Tatum), the story follows marketing specialist Kelly Jones (played by Scarlett Johansson) as she is tasked with staging a fake moon landing if the actual mission fails, sparking high-stakes tension.

The Spiegel Community Center is located at 35 Lincoln Avenue. To learn more about our programs, activities, and services for seniors, visit the [Seniors page](#) on the Town website, read the [Seniors program](#) info brochure online, or call our Senior Programs Office at 248-6235.



SEASONAL LABORER POSITION OPEN – PARKS DEPARTMENT

Application Deadline: March 31, 2026

The Town of Pittsford’s Parks Department is seeking applicants for a **Seasonal Laborer** position.

This seasonal role supports park maintenance throughout the community. Responsibilities include mowing, trimming, weeding, athletic field preparation, trail work, and a variety of other outdoor tasks. The position requires working outdoors in all weather conditions.

The position is 40 hours per week, and the term of employment runs from April 1 through September 30. April hours are Monday through Friday, 7:00am–3:30pm. Summer hours (May through August 31) are Monday through Thursday, 6:30am–4:00pm and Friday, 6:30am–10:30am.

A valid New York State driver's license is required, and candidates must pass a pre-employment drug screening and background check. The selected candidate must be able to communicate effectively with residents and serve as a positive representative of the Town. Employees must maintain primary residency in Monroe County or one of the adjoining counties (Wayne, Ontario, Livingston, Genesee, or Orleans), in accordance with Monroe County Civil Service requirements.

For a **complete job description**, visit <https://bit.ly/4I3NWVW>

Interested applicants should **submit an employment application by mail, email, or fax to:**

Town of Pittsford
Attn: Personnel Department
11 South Main Street
Pittsford, NY 14534
Email: cfleming@townofpittsford.org
Fax: (585) 248-6247

For an employment application, visit the Town's website and click "[Employment Opportunities](#)."

SPRING RECREATION PROGRAMS REGISTRATION IS UNDERWAY

It's time to register for spring classes and programs through Pittsford Rec! We've got **spring sports opportunities**, a variety of themed **summer camps**, a **cupcake competition** for kids 9-14, a **Minecraft Art Camp**, **guided hikes** on Pittsford Trails, a **Traveler's Spanish class** for adults, and a **variety of programs, events, and workshops at our senior center**. Brochures have been mailed to Pittsford residents, but you can always view the current brochure online at www.townofpittsford.org/sites/default/files/publications/rec_brochure.pdf.



Registration for **spring programs and Summer Fun Camps** is underway for Pittsford residents. Registration for all others begins March 9. Pittsford residents can make now make **facility reservations** for the spring 2026 season (late March through June) at both the Pittsford Community Center and the Pittsford Community Library.

Register for programs or reserve a facility [online](#) or in person at the Spiegel Pittsford Community Center, 35 Lincoln Avenue.

The Town's Spiegel Community Center is located at 35 Lincoln Avenue. To learn more about our programs, activities and services, [click here to visit the Town](#) of Pittsford's Recreation page on the Town website, [email the Recreation Department here](#), or call the Spiegel Community Center at 585-248-6280.

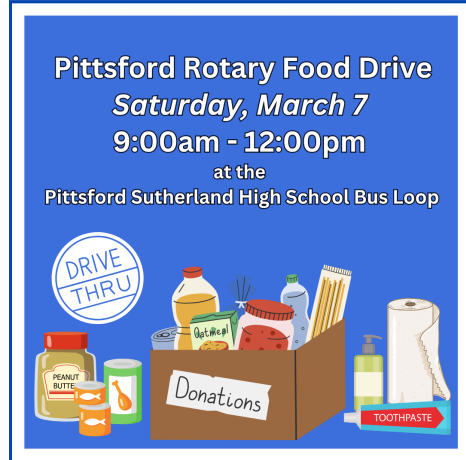
PITTSFORD ROTARY FOOD DRIVE THIS SATURDAY, 9AM – 12PM

The Rotary Club of Pittsford's next food drive is scheduled for this **Saturday, March 7**, from 9:00am-noon at the **Pittsford Sutherland High School bus loop**. Rotarians and Interact members will be collecting at the drive in rain, snow, or shine.

Donations will support the [Pittsford Food Cupboard](#) and the Nazareth University [Oak Tree Food Pantry](#). In addition, a portion of this month's donations will support the development of a **Little Food Pantry**, an Eagle Scout project of Ethan Ingalsbe, who will be at Saturday's drive. He plans to open the pantry at St. Paul's Evangelical Lutheran Church in Pittsford and is seeking materials and food to stock the pantry.

Gently used recent issues (past 12 months) of magazines will also be collected for distribution to various social agencies in the Rochester area.

The [Pittsford Food Cupboard](#) plays a crucial role within our community. Donations help ensure that local families have access to essential food items that will promote well-being and stability. Current needs include pineapple, peas, mixed veggies, dog food, and cleaning supplies. The pantry currently has no room for kidney beans, black beans, white beans, or green beans.



[The Oak Tree Pantry](#) serves those with food insecurity in the Nazareth University community. Specific needs for the Oak Tree Food Pantry include items that students can easily prepare, such as soups, canned meats and vegetables, and sauces. The pantry also needs granola bars, pasta, peanut butter, soap, and other hygiene products.

The Pittsford Rotary Club has scheduled food drives on the first Saturday of the month through next spring. Additional information is available at pittsfordrotaryclub.org or contact David Irwin by email (driwin8@gmail.com) or phone (585-269-2132). Please help our Rotarians help those in need if you can!



PITTSFORD SCHOOLS CAPITAL PROJECT VOTE IS TOMORROW, MARCH 5

Residents to Decide on \$48.7 Million, Tax-Neutral Proposal

Pittsford residents are invited to vote **tomorrow, Thursday, March 5, 2026**, on a proposed **\$48.7 million, tax-neutral Capital Improvement Project** for the Pittsford

Central School District.

Voting will take place at **Calkins Road Middle School** from **7:00am to 9:00pm**. Guided by responsible financial planning, there is **no planned increase in the tax** associated with this proposal. The Capital Improvement Project is designed to address priority infrastructure needs identified in the **New York State-mandated Building Condition Survey**. The work will help preserve, enhance, and protect District facilities while supporting Pittsford Schools' continued commitment to excellence in education.

Project Priorities Include:

- Roof replacements and protective coatings
- Boiler steam plant and Mendon High School water line replacements
- Replacement of public address systems and installation of emergency generators
- Addition of air conditioning in large group instruction and assembly areas
- Corridor floor tile abatement and replacement
- Parking lot repaving
- Replacement of chillers and reduced pressure zone (RPZ) devices
- Replacement of playground equipment at Allen Creek Elementary

Residents are encouraged to learn more before heading to the polls:

www.pittsfordschools.org/2026CapitalProject

Make your voice heard! Polls are open tomorrow from **7:00am to 9:00pm** at **Calkins Road Middle School**.

THE LITTLE HOUSE OPEN THIS SATURDAY, March 7

The Little House, Historic Pittsford's headquarters and museum, will be open for visitors this **Saturday, March 7, from 9:00am to 12:00pm**. If you have never visited the 200-year old Little House, this is your chance to explore local history and enjoy a number of new and engaging exhibits!



- On view in the Resource Room is a **photographic display celebrating Pittsford's agricultural heritage**. The exhibit features images of historic barns, both those that still stand as reminders of the town's deep farming roots and rural character and those that have been lost.
- In honor of Black History Month and Women's History Month, the Little House has a **special display highlighting Black and White women who have made significant contributions to our community's history**. Through photographs and brief biographies, the exhibit celebrates the lasting impact of local women across generations.
- In anticipation of the 250th anniversary of the signing of the Declaration of Independence, Historic Pittsford is proud to display **prints and paintings depicting important events and people from that era**.

Whether you're a longtime resident or new to the area, the Little House offers a welcoming space to explore, learn, and reflect on the rich history of our community. Historic Pittsford Board members will be on hand to greet visitors and answer questions.

Located at **18 Monroe Avenue** next to Pittsford's Fire Station, the Little House is a historic gem in the heart of the Village of Pittsford. It serves as Historic Pittsford's office, has a resource room for historic research, and exhibits of interest to all ages.

The Little House is open on the first Saturday of each month or by appointment. Call (585) 381-2941 or email HistoricPittsford@gmail.com to schedule a time to visit. Visit HistoricPittsford.com for more information.

SAVE THE DATE: A TASTE OF PITTSFORD – MARCH 16

Mark your calendar for one of Pittsford's favorite spring traditions! **Pittsford Rotary's "A Taste of Pittsford"** returns on **Monday, March 16, from 6:00–8:30pm** at the Nazareth University Shults Center.

This popular annual fundraiser, hosted by the Pittsford Rotary Club, features signature tastings from local restaurants, wineries, and breweries, along with an extensive silent



auction and exciting prizes. It's a wonderful way to enjoy an evening out while supporting Rotary's service projects in our community.

Tickets are **\$50** and available in advance from any Pittsford Rotarian or [online at PittsfordRotaryClub.org](http://PittsfordRotaryClub.org). Tickets purchased online will be available at the Will Call table on the evening of the event.

Sponsorship opportunities are also available at the Bronze (\$2,500), Silver (\$5,000), and Gold (\$10,000) levels. Businesses or organizations interested in becoming a major sponsor may contact event coordinator Holly Garber at hlgarber@gmail.com.

Make plans now to celebrate great food, local businesses, and community spirit — and help usher in spring with Rotary!

UPCOMING ACTIVITIES IN PITTSFORD

- [Red Cross Blood Drive at Pittsford Community Library](#), Friday, 3/6, 10:00am-3:00pm, Pittsford Community Library Fisher Meeting Room, 24 State Street; [schedule an appointment in advance using this online registration link](#) or call 1800-RED CROSS (1-800-733-2767).
- **Supervisor Saturday**, join the conversation with Town Supervisor Bill Smith at this casual open house, topics of discussion based upon attendee interest; Saturday, 3/7, 6:00pm, Fisher Meeting Room (first floor), Pittsford Community Library, 24 State Street
- **"The Flower Thief Story Stroll,"** 3/9 – 3/15, field at the Spiegel Community Center, 35 Lincoln Avenue; stop by the Community Center front desk after completing the walk to pick up a themed craft pack to take home; free and open to the public.
- [Pittsford Rotary Food Drive](#), Saturday, 3/7, 9:00am - 12noon, Pittsford Sutherland High School bus loop, 55 Sutherland Street, collecting canned and packaged food items and personal hygiene items to benefit the [Pittsford Food Cupboard & Nazareth College Oak Tree Food Pantry](#) (click links for complete lists of needs); gently used recent (past 12 months) magazines are also needed.
- **Taste of Pittsford**, Monday, 3/16, 6-8:30pm, Nazareth College's Shults Center, 4245 East Avenue; featuring a variety of tastings from area restaurants, caterers, wineries and breweries plus a silent auction featuring a variety of items; proceeds to benefit Rotary's many local charitable efforts. More information and tickets online at www.pittsfordrotaryclub.org.

TOWN OF PITTSFORD BOARD MEETINGS

- **Planning Board**, Monday, 3/9 – **MEETING CANCELED**
- **Pittsford Community Library Board**, Wednesday, 3/11, 6:00pm, Fletcher Steele Room, Pittsford Community Library, 24 State Street; the meeting agenda is posted at least two days prior to the meeting on the Town website here: www.townofpittsford.org/minutes

COMMUNITY MEETINGS CALENDAR

- [Village Board of Trustees](#) meetings are generally the second and fourth Tuesday of the month at 5:00pm, Village Hall, 21 North Main Street; more information and participation details will be listed on the Village website [here](#) as the meeting date approaches

- [American Legion Rayson-Miller Post 899](#) Tuesday morning breakfast and socializing, every Tuesday, 8:00-9:30am (kitchen closes at 9:15am), Post 899, Pittsford Village Hall lower level, 21 North Main Street; open to all – meet and socialize with veterans; no charge but donations accepted. Eligible veterans welcome to join the Post; click this link for [membership information](#) or visit the [Rayson-Miller Post website](#)
- [Pittsford Rotary Club](#), Wednesdays (weekly), 7:00am, Pittsford Community Library, 24 State Street; meetings also can be accessed live via Zoom - check the Pittsford Rotary Facebook page for virtual meeting details
- [Women's Club of Pittsford](#) – charitable organization serving the community through service projects and civic improvement; membership is open to any woman living in Pittsford or the surrounding areas, new members always welcome! Meetings are usually held the second Thursday of the month, September through June, at 6:00pm at the Spiegel Community Center, 35 Lincoln Avenue; Visit the website at www.womensclubofpittsford.org for more information
- [Pittsford Art Group](#) conducts monthly member meetings (in person and online) featuring a guest artist; new members are welcome! The PAG also hosts juried and non-juried shows and displays artwork at various locations throughout Pittsford. For further information or to become a member, please visit www.pittsfordartgroup.com and fill out a [Contact Us](#) form.

If you have been forwarded this eNews issue and wish to subscribe, visit www.townofpittsford.org/enews

Current Subscribers:

To update your email address use the "Update Profile" link (bottom of this email).

TV-12 PITTSFORD CABLE CHANNEL 1303 is on seven days a week.
Find the [current schedule here](#).

[Photo Gallery](#)

[eNews Archives](#)



Town of Pittsford
11 S. Main St
Pittsford, NY 14534
Info and archived copies at
www.townofpittsford.org/enews

Contact Us





Try email marketing for free today!