

# **2022 Sewer Department Project Funding Requests**

Jim Peterson – General Foreman



# Preventative Maintenance – Alpine Neighborhood Sewer Relining

- Sanitary Sewers constructed in the late 1950's
- 4632' of sewer pipe that serve 90 residential homes
- Sewer Deficiencies:
  - Running sand makes excavation difficult
  - Clay pipe has deteriorated, with many off-set joints
  - Tree root penetration
  - Bi-annual root cutting is required
  - I&I – Inflow and Infiltration
  - Sewer back ups have occurred





## Off-Set Joints

1.60 °

40.38 ft

3/30/22 10:46:43 AM



Root Penetration

- 0.68 °

322.84 ft

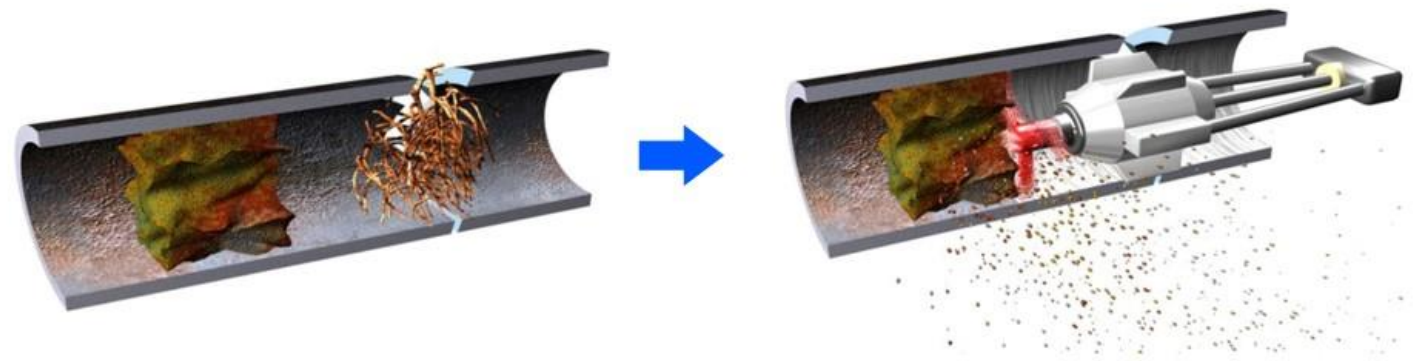
322.84 ft

3/30/22 12:41:48 PM

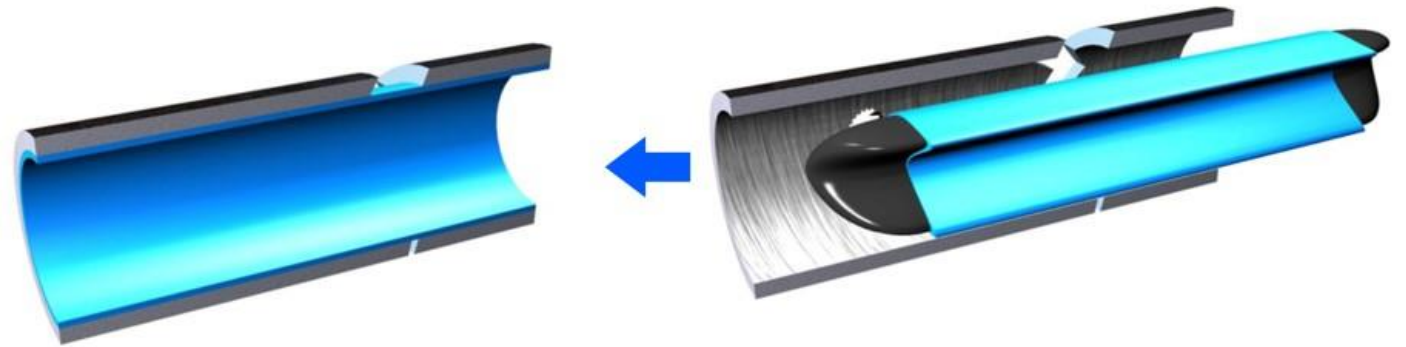


# Alpine Neighborhood Sewer Relining

- Minimal disruption to the neighborhood
- No need to shut off water to home
- Project Estimate - \$270,000



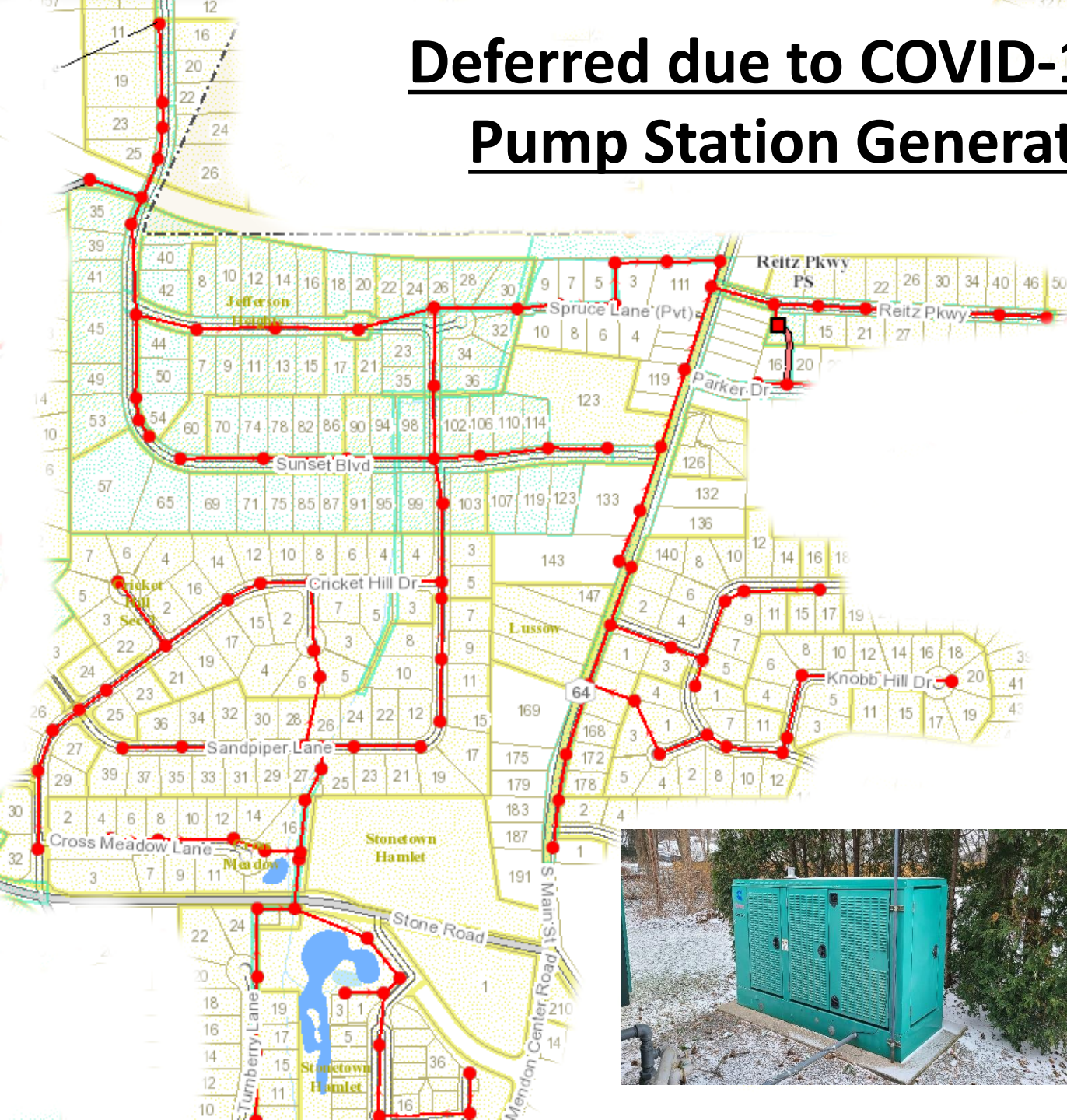
PIPE LINING PROCESS





# Deferred due to COVID-19 – Reitz Parkway Pump Station Generator Replacement

- Pump Station serves a large number of households from Reitz Parkway through the Sunset Neighborhood.
- Generator is 20 years old
- It is presenting reliability and maintenance issues
- Assists during Power outages preventing sewer backups
- Project Estimate - \$33,000





# Lehigh Pump Station Upgrades

- Pump station services ~450 homes south of Lehigh Station Rd. An additional 191 homes south of the Thruway will be added to the system.
- Capacity Issues
- Issues with the reliability of the Pumps



- Pumps will be upgraded to be consistent with other Town stations
- S.C.A.D.A (Supervisory Control & Data Acquisition) monitoring will be added
- Project Estimate - \$128,000



## **Miscellaneous Improvements**

- **Sewer Department Building Repairs**
  - **Overhead Door Replacement – Project Estimate \$13,000**
    - **Exceeding 20 years old**
    - **Costly to Repair**
  - **Replacement Air Compressor – Project Estimate \$6,000**
  - **Replacement Security Gate – Project Estimate \$14,000**
    - **Much after-hours activities because of Canal Path use**
- **Additional Pump Station Improvements – Project Estimate \$29,000**
  - **Replacement Pumps**
  - **Purchase back-up Pumps**
  - **S.C.A.D.A (Supervisory Control & Data Acquisition) Control Panel Upgrades**
- **Replacement Septic System for Mile Post School House – Project Estimate \$5,000**



# **2022 Sewer Department Project Funding Requests**

<b>Alpine Neighborhood Sewer Relining</b>	<b>\$270,000</b>
<b>Reitz Parkway Pump Station Generator Replacement</b>	<b>\$33,000</b>
<b>Lehigh Pump Station Upgrades</b>	<b>\$128,000</b>
<b>Sewer Garage Overhead Door Replacement</b>	<b>\$13,000</b>
<b>Air Compressor Replacement</b>	<b>\$6,000</b>
<b>Security Gate Replacement</b>	<b>\$14,000</b>
<b>Miscellaneous Pump Station Improvements</b>	<b>\$29,000</b>
<b>Septic System for Mile Post School House</b>	<b><u>\$5,000</u></b>
<b>Total</b>	<b>\$498,000</b>

**All of these improvements are eligible for payment with ARPA funds.**

## **Questions?**