

News & Reviews

December 17,
2025

Town of Pittsford - a Clean
Energy and Climate Smart
Community

*See listings below for
Upcoming Activities, Town Board Meetings & Community Meetings*

CHRISTMAS & NEW YEAR'S HOURS FOR TOWN OFFICES & FACILITIES

Please note the following holiday closures and adjusted hours for Town of Pittsford offices and facilities.

Town Offices & Facilities

Christmas

- **Closed:** Town Hall and Town Court will be closed on **Wednesday, December 24**. All Town offices and facilities will be closed on **Thursday, December 25, through December 26**. (Includes Town Hall, Town Court, and the Parks, Sewer, and Highway Departments.)



New Year's

- **Early Closing:** Town Hall and Town Court will close at 1:00pm on Wednesday, December 31
- **Closed:** All Town offices and facilities on Thursday, January 1
- **Resume Regular Hours:** Friday, January 2

Spiegel Community Center

Christmas

- **Closed:** Wednesday, December 24 through Friday, December 26
- **Open:**
 - Saturday, December 27: 8:00am–6:00pm
 - Sunday, December 28: 12:00–5:00pm
 - Monday, December 29: 8:00am–6:00pm
 - Tuesday, December 30: 8:00am–6:00pm

New Year's

- **Closed:** Wednesday, December 31 and Thursday, January 1

- Resume Regular Hours: Friday, January 2

Pittsford Community Library

Christmas

- Closed: Wednesday, December 24 through Friday, December 26
- Resume Regular Hours: Saturday, December 27

New Year's

- Early Closing: Tuesday, December 31 at 5:00pm
- Closed: Thursday, January 1
- Resume Regular Hours: Friday, January 2

In case of an emergency requiring Town of Pittsford services during holiday closures, please call (585) 248-6212.

Best wishes for a happy and safe Christmas and New Year!

VOLUNTEER BOARD OPENINGS - RESUMES ACCEPTED THROUGH FRIDAY, 1/9

The Town of Pittsford seeks applications from residents who are interested in serving on our Volunteer Boards. The following Volunteer Boards each have openings:

- Planning Board
- Zoning Board of Appeals

Please indicate which Volunteer Board you're interested in.

Town Volunteer Boards assist with the various functions of Town government and, in many cases, make decisions on key issues affecting Pittsford's success as a community.

Selection Process: Once we receive candidate resumes, we will distribute them equally among Town Board members, who will then, along with the corresponding board chair, interview interested candidates. Interview questions will be consistent among candidates, and responses will be rated against the same criteria. The highest-rated candidates will be selected; those not selected will be notified.

Any Pittsford resident with an interest in serving on one of the above volunteer boards should **send a resume for consideration by Friday, January 9, 2026 to:**

Supervisor's Office, Town of Pittsford, 11 South Main Street, Pittsford, New York 14534 or email to sbernard@townofpittsford.org.





RAINBOW CLASSIC CELEBRATES 25 YEARS THIS FRIDAY, DECEMBER 19

Pittsford Central School District will celebrate the **25th Anniversary of the Rainbow Classic Basketball Games** this Friday, December 19, at the **University of Rochester Palestra**. This beloved annual Mendon vs. Sutherland rivalry brings our community together in support of **Golisano Children's Hospital**. Over the past quarter-century, the Rainbow Classic has raised **more than \$600,000** to support lifesaving pediatric care.

The **Girls Varsity Game** tips off at **6:00pm**, followed by the **Boys Varsity Game** at **8:00pm**.

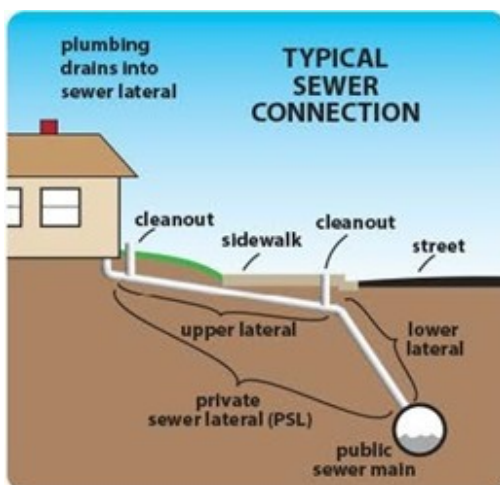
Tickets are **\$12** and are available **online only** through the Pittsford Central School District website: <https://bit.ly/4rHnhrs>. This event traditionally sells out, so early ticket purchasing is encouraged.

For those unable to attend in person, **\$12 livestream tickets** for both games will be available (2025 Rainbow Classic Boys AND Girls games LIVE STREAM – Varsity Media Pass).

Community members can also watch the District's special **25th Anniversary Rainbow Classic video** and make a direct donation to benefit **Golisano Children's Hospital**, including its Mobile Care Unit initiative.

- Watch the video: [Rainbow Classic 25th Anniversary Video](#)
- Make an online donation: [Golisano Children's Hospital – Support the Mobile Care Unit](#)

Join the Pittsford community in cheering on our student-athletes and celebrating 25 years of teamwork, tradition, and giving back!



PROTECT YOUR HOME: AVOID SEWER BACKUPS

A Message from the Town of Pittsford Sewer Department

Sewer backups can happen for many reasons, many of which are within a homeowner's control. Knowing these causes can help you take preventive steps or act quickly when needed.

1. **Clogged Drains or Pipes:** One of the most common reasons for sewage backups is a blockage in the home's plumbing system.

Grease, hair, toilet paper, or foreign objects can clog pipes, stopping wastewater from

flowing properly. Over time, this can cause a backup that allows sewage to enter the home.

2. **Human Error:** Flushing non-flushable items like wipes, sanitary products, or too much toilet paper can overwhelm plumbing systems. Even "flushable" wipes can cause clogs because they don't break down as easily as manufacturers claim.

3. **Fat, Oil, and Grease: the most common offender!** Fat, oil, and grease combine with other solids to form "fatbergs." These solid masses can cause blockages anywhere in the sewer system. Please do not pour these down the drain; instead, put them in a container and throw them in the trash.

Remember, the homeowner owns the pipes running from the house to the sewer main. The sewer main is maintained by the Town Sewer Department. If you experience a problem, do not run any water and call the Sewer Department at (585) 248-6490. We will come out to check whether the main is flowing properly and advise you on whether you need to call a plumber.



NARCAN TRAINING & SERVICES INFO AT LIBRARY THIS FRIDAY, 12/19 - LEARN TO SAFELY STOP AN OPIOID OVERDOSE

The Pittsford Community Library will host free public Narcan training and distribute Narcan kits this **Friday, December 19, from 1:00 to 4:00pm** in the **Library hallway**. Staff from the Monroe County Health Department will be present to teach residents how to recognize and safely respond to an opioid overdose using Narcan, a quick-acting nasal spray that can reverse an overdose within minutes.



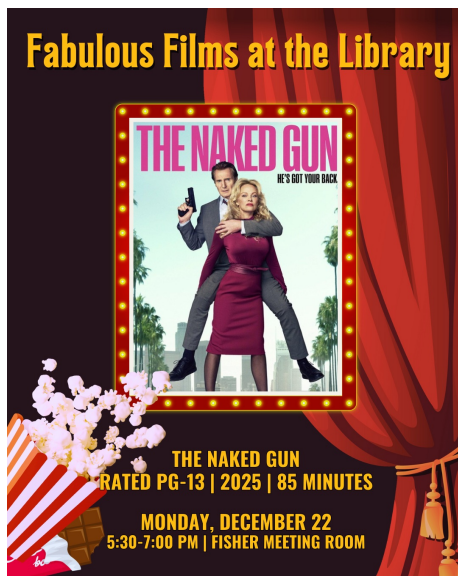
Monroe County continues to see high levels of overdose activity, with **1,442 overdoses and 115 suspected overdose fatalities reported so far in 2025**. While the highest concentrations occur in urban areas, public health experts emphasize that accidental overdoses—often involving prescription medications or unexpected fentanyl contamination—can affect families in every community, including suburbs like Pittsford. Adults in their **30s** remain the most impacted age group, and men overdose at roughly **three times** the rate of women.

Nearly **one-third of Narcan rescues** are performed by family members, friends, or bystanders, underscoring the value of keeping a kit at home or in your car.

Quick action saves lives. Stop by the Library on Friday to learn this simple, lifesaving skill and take home a free Narcan kit.

The Pittsford Community Library is located at 24 State Street. To learn more about upcoming Library programs, sign up for the [Library's weekly eNewsletter](#), visit the

[Library's online program calendar](#), or call (585) 248-6275. For complete Library information, including hours of operation, visit www.townofpittsford.org/library.



FABULOUS FILMS AT THE LIBRARY – 12/22
Enjoy a fun evening at the Pittsford Community Library with the latest installment of a classic comedy franchise. **Fabulous Films at the Library** returns on **Monday, December 22**, with a free screening from **5:30–7:00pm** in the **Fisher Meeting Room**. Seating is first-come, first-served; all are welcome.

This month's feature is **The Naked Gun** (85 minutes, PG-13), a fast-paced comedy that revives the beloved Police Squad universe for a new generation. When chaos threatens public safety, only one man has the uniquely questionable judgment, unshakable confidence, and accidental brilliance needed to step up. The film's deadpan

jokes, juxtaposed with physical comedy and over-the-top action, all poke good fun at police procedurals and action films.

The Pittsford Community Library is located at 24 State Street. To learn more about upcoming Library programs, sign up for the [Library's weekly eNewsletter](#), visit the [Library's online program calendar](#), or call (585) 248-6275. For complete Library information, including hours of operation, visit www.townofpittsford.org/library.

FREE TECHNOLOGY HELP FOR SENIORS

Seniors – do you need help with your electronic devices? Sign up for a one-on-one "Tech with Ginny" session at the Spiegel Community Center. Bring your cell phone, tablet, iPad, laptop, or other electronic device, and Ginny will help you solve your tech issues. These 30-minute sessions are available from **9:30am to noon each Thursday**. Reserve your time by calling the Senior Programs office at 248-6235. This program is free and open to everyone over 50!



The Town's Spiegel Community Center is located at 35 Lincoln Avenue. To learn more about our programs, activities and services for seniors, [click here to visit the Seniors' page](#) on the Town website, [read our Seniors program info brochure online](#), or call the Senior Programs Office at 248-6235.

CHRISTMAS TREE SAFETY TIPS

With Christmas trees already glowing in many homes, now is a good time to take a few simple steps to reduce fire risks and keep your household safe throughout the holidays. Both live and artificial trees can pose hazards if not

Christmas Tree Safety Tips



properly maintained.

Live Trees

If you have a live tree, **watering is essential**. A freshly cut tree can absorb up to **a gallon of water daily**, especially in the first week. Always keep the stand filled with water; a dry tree can ignite quickly. Position your tree at least three feet away from fireplaces, heating vents, radiators, candles, and space heaters, and ensure it doesn't block doorways or exits. If needles start falling heavily or branches become brittle, it's time to remove the tree. Follow local

recycling or disposal guidelines and never burn a Christmas tree in a fireplace or wood stove.

Remember – each year, the Town picks up Christmas trees for recycling. The Town will pick up your tree so long as it's placed curbside with all decorations removed. Weather permitting, **Christmas trees are picked up each year from the week after Christmas through the end of January**. All trees are eventually chipped and reused as mulch, available to residents each spring at no cost.

Artificial Trees

Artificial trees should be labeled "fire-resistant," but this does not mean they are fireproof. If your tree has built-in lights, **inspect for damaged wiring, loose connections, or signs of overheating**. Avoid adding extra light strings beyond what the manufacturer recommends.

Lights & Decorations

Only use certified light strings and be sure indoor lights are used indoors. **Check cords each season for fraying or damage and replace any faulty strands**. Turn tree lights off before going to bed or leaving home; using a timer can help ensure lights aren't left on overnight.

Extra Fire Safety Reminders

Make sure **smoke detectors are working on every level of your home** and near sleeping areas and test them regularly during the holiday season. Keep a fire extinguisher accessible, especially near kitchens and fireplaces.

A few simple precautions can help you enjoy your Christmas tree's beauty while keeping your home safe all season long.

UPCOMING COMMUNITY ACTIVITIES IN PITTSFORD

- **"Meet December" Story Stroll**, 12/15 – 12/21, field at the Spiegel Community Center, 35 Lincoln Avenue; stop by the Community Center front desk after completing the walk to pick up a themed craft pack to take home; free and open to the public.
- [Rainbow Classic Mendon vs. Sutherland Basketball Games](#), Friday, 12/19, University of Rochester Palestra; Varsity Girls game at 6:00pm, Varsity Boys game at 8:00pm; tickets are advance-sale only; visit the Pittsford Central School District [Rainbow Classic web page](#) for more information. All proceeds to support Golisano Children's Hospital.

TOWN OF PITTSFORD BOARD MEETINGS

- **Planning Board**, Monday, 12/22 – **NO MEETING**
- **Town Board**, Tuesday, 12/23, 6:00pm, Public Meeting Room, Town Hall (lower level), 11 South Main Street, ASL interpretation provided; the meeting agenda is posted at least two days prior to the meeting on the Town website here: www.townofpittsford.org/minutes

COMMUNITY MEETINGS CALENDAR

- [Village Board of Trustees](#) meetings are generally the second and fourth Tuesday of the month at 5:00pm, Village Hall, 21 North Main Street; more information and participation details will be listed on the Village website [here](#) as the meeting date approaches
- [American Legion Rayson-Miller Post 899](#) Tuesday morning breakfast and socializing, every Tuesday, 8:00-9:30am (kitchen closes at 9:15am), Post 899, Pittsford Village Hall lower level, 21 North Main Street; open to all – meet and socialize with veterans; no charge but donations accepted. Eligible veterans welcome to join the Post; click this link for [membership information](#) or visit the [Rayson-Miller Post website](#)
- [Pittsford Rotary Club](#), Wednesdays (weekly), 7:00am, Pittsford Community Library, 24 State Street; meetings also can be accessed live via Zoom - check the Pittsford Rotary Facebook page for virtual meeting details
- [Women's Club of Pittsford](#) – charitable organization serving the community through service projects and civic improvement; membership is open to any woman living in Pittsford or the surrounding areas, new members always welcome! Meetings are usually held the second Thursday of the month, September through June, at 6:00pm at the Spiegel Pittsford Community Center, 35 Lincoln Avenue; Visit the website at www.womensclubofpittsford.org for more information
- [Pittsford Art Group](#) conducts monthly member meetings (in person and online) featuring a guest artist; new members are welcome! The PAG also hosts juried and non-juried shows and displays artwork at various locations throughout Pittsford. For further information or to become a member, please visit www.pittsfordartgroup.com and fill out a [Contact Us](#) form.

If you have been forwarded this eNews issue and wish to subscribe, visit www.townofpittsford.org/enews

Current Subscribers:

To update your email address use the "Update Profile" link (bottom of this email).

TV-12 PITTSFORD CABLE CHANNEL 1303 is on seven days a week.
Find the [current schedule here](#).

[Photo Gallery](#)

[eNews Archives](#)

Town of Pittsford
11 S. Main St
Pittsford, NY 14534
Info and archived copies at



Contact Us



Town of Pittsford | 11 S. Main St. | Pittsford, NY 14534 US

[Unsubscribe](#) | [Update Profile](#) | [Constant Contact Data Notice](#)



Try email marketing for free today!