

# News & Reviews

October 14, 2020

***Town of Pittsford - a Clean Energy Community***

***See listings below for***

***Upcoming Activities, Town Board Meetings & Community Meetings***

## **SPOOKTACULAR DRIVE-IN MOVIE AND COSTUME PARADE THIS SATURDAY**

### ***Bring canned goods for Food Cupboard***

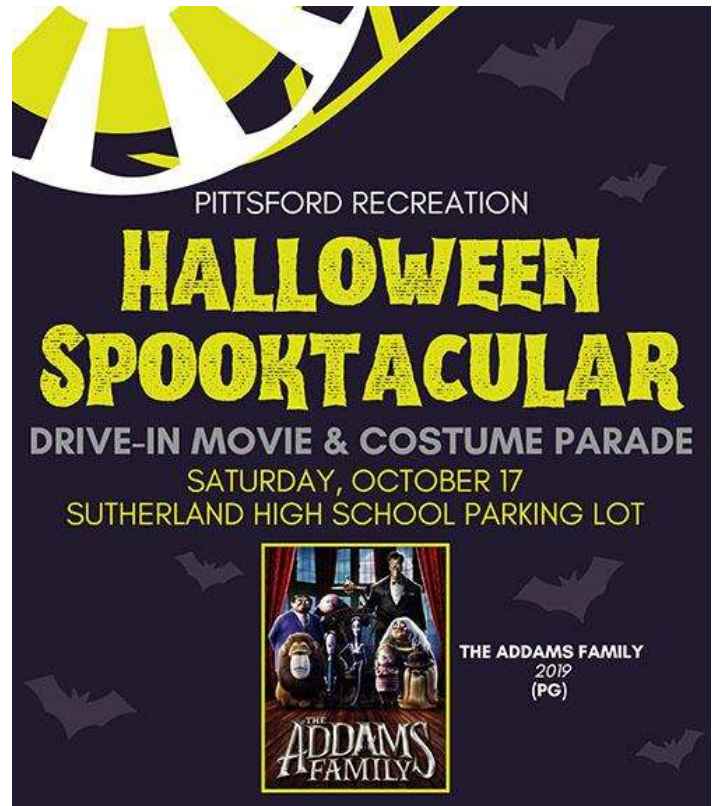
We're celebrating the season - the Town of Pittsford's **Halloween Spooktacular Drive-In Movie and Costume Parade** is this Saturday, October 17 at the Sutherland High School parking lot. Join us to view ***The Addams Family*** (rated PG) and be sure to dress up for our Costume Parade.

We'll have free cider, donuts, and Halloween goodie bags too! The parking lot opens at 5:30pm and the Costume Parade is at 6:00pm. The movie will begin at dark (approximately 6:30pm). **Admission is free, however we ask attendees to bring one canned food item per person to benefit the Pittsford Food Cupboard.**

Cars will be parked on a first come, first served basis until the lot is full. Movie-goers will be permitted to sit inside of their vehicles or outside in front of their vehicles. Please note attendees must remain in their designated parking/viewing area. Bring snacks, blankets and lawn chairs if you'd like. Please adhere to physical distancing guidelines while at our Spooktacular Drive-In Movie Night and wear a face covering if you use the restrooms or will be within 6 feet of others outside of your group.

The movie sound will be broadcast over FM radio - directions will be on screen before the movie begins. **To make the evening safe and enjoyable for everyone, please note the following guidelines:**

- Park speed limit is 5 mph
- Staff will direct vehicles where to park - please remain in your assigned parking spot
- Make sure vehicle lights remain off during the movie - parking lights are acceptable when parking or leaving after dark
- Remain in your car or sit in front of your car
- Please don't gather outside of the designated parking/viewing area



**Family Fun this Saturday - wear your costume and bring a canned good for the Food Cupboard!**

- Masks must be worn while walking to & from the bathroom

We're looking forward to a fun and festive night - be sure to join us! Sutherland High School is located at 55 Sutherland Street.

**FOOD TRUCK WEDNESDAY TONIGHT  
FEATURES BAY VISTA TAQUERIA &  
KONA ICE!**

The Pittsford Recreation Department's "Food Truck Wednesdays" are held at Thornell Farm Park each Wednesday evening through October 21, from 5:00 - 8:00pm (or until menu items are sold out).

A different food truck is featured each week offering items for sale at the park and Kona Ice will be there every week! **Bay Vista Taqueria** will be joining us TONIGHT, **October 14**, offering a delicious variety of **tacos, nacho bowls, fajita bowls and more.** **Kona Ice** will bring the best **premium shaved ice in a variety of flavors.** Vendors and menus are listed in advance each week on the Pittsford Recreation Facebook page, on the Town website and in the Town eNews. [Click here for this week's menus.](#)



**Food Truck Wednesday is tonight!**

Be sure to join us - it's a fun and easy dinner option! Please note all attendees are expected to observe appropriate physical distancing and health safety protocols - face coverings are required when placing and picking up your order. Thornell Farm Park is located at 480 Mendon Road. We look forward to seeing you there!

**REMINDER FROM SUPERVISOR SMITH: MASK USE**

A reminder that COVID-19 virus cases are on the upswing in Monroe County, which makes wearing a mask more important now than ever. Colleges are back in session. Many residents, students and visitors are out enjoying the fall weather. Please remember to **keep a mask or face covering with you and use it** when you are in a group of people, especially if there is a chance you will be within 6 feet of others outside of your family or home group. **Enjoying our natural spaces** is a positive way to ease the strain of the COVID-19 pandemic and its related restrictions. So too are opportunities to safely enjoy activities or a meal out, or to shop for needed items. When you head out please - for yourself, for others, for reaching more quickly a future where we won't need masks - wear your mask when in public. And if you can, consider **patronizing our local businesses**, whether shopping in-store or online, dining or ordering take-out, utilizing services, or purchasing gift cards for future use. We're all in this together!

**JOB OPENING: PART-TIME ASSISTANT BUILDING INSPECTOR**

**Applications due October 19**

The Town of Pittsford has a job opening for a part-time Assistant Building Inspector. The position is responsible for the administration and enforcement of NYS codes related to building and demolition permits and Certificates of Occupancy. This position is 25 hours per week and reports to the Building Inspector. Applications are due this Monday, October 19.

Find a complete [job description and application information here](#) or visit the [Employment Opportunities](#) page link under the "Contact Us" tab on the Town website, [www.townofpittsford.org](http://www.townofpittsford.org).

**For complete job descriptions and application information for all open positions**, visit the Town's job listings web page at [www.townofpittsford.org/home-pittsford-employment-opportunities](http://www.townofpittsford.org/home-pittsford-employment-opportunities).

### **PITTSFORD COMMUNITY LIBRARY CELEBRATES 15 YEARS**

#### ***A message from Library Director Amanda Kuhnel Madigan***

The Pittsford Community Library opened the doors to its new building 15 years ago this fall, and we are as appreciative of this building today as we were on the first day it opened. Thank you for visiting us, supporting us, and making our Library a part of your lives. In recognition of our 15 year anniversary, **we want to hear about your favorite memories at our Library**, and the way public libraries have impacted your life. [Click here to share your story](#), and stop by the Circulation Desk to pick up something (while supplies last) from our Library to you, our community. Thank you for an amazing 15 years!

### **FLU CLINIC AT THE SPIEGEL PITTSFORD COMMUNITY CENTER THIS THURSDAY, 10/15**

A [public flu clinic by Flu Prevention Partners for ages 18 and up](#) will be held at the Spiegel Pittsford Community Center this Thursday, October 15 from 5:00 - 7:00pm. Flu Prevention Partners has been providing flu immunization to the Greater Rochester community since 2007. Immunizations are given by experienced registered nurses. Most major insurance plans are accepted, see the [Flu Clinic Info flyer](#) for details. For those with different insurance plans or for the uninsured, the cost is \$35 (cash or check). Immunizations are for adults aged 18 and up. For more information see their Flu Clinic Info flyer or contact them at [info@wpvinc.com](mailto:info@wpvinc.com) or (585) 568-8340. The Spiegel Pittsford Community Center is located at 35 Lincoln Avenue.

### **SHOP THE PTSA "SUPER SALE TRAIL" THIS SATURDAY TO SUPPORT OUR STUDENTS!**

#### ***Yard sales along the trail will benefit the Pittsford PTSA***

The 57th Annual PTSA Super Sale will look a bit different this year, and you can help make it a success by shopping the [Super Sale Trail](#)! COVID-19 safety precautions mean the PTSA can't hold its traditional Super Sale, so caring residents in our community are hosting **yard sales this Saturday, October 17 from 9:00am - 3:00pm** and donating the proceeds to benefit the PTSA. You'll find the [Super Sale Trail Map here](#). The Super Sale is Pittsford PTSA's largest fundraiser, and funds raised will benefit every student in Pittsford Schools. Don't miss out! Shop for bargains on furniture, art, kitchenware, sporting goods, clothing, baby gear, gardening supplies, toys, games, books, puzzles and more. For more information about the sale, visit [www.pittsfordptsa.net/super-sale](http://www.pittsfordptsa.net/super-sale)

The PTSA Super Sale provides the majority of funding for PTSA enrichment grants, the Student Opportunity Fund, and a variety of programs and activities to benefit students. Have fun shopping and you'll be supporting our Pittsford students!

### **WATCH PITTSFORD'S MORGAN VIDAL COMPETE TO BE NEXT TOP TEEN ENTREPRENEUR**

#### ***Semi-finals to stream live and finals will be broadcast on 13WHAM this Saturday, October 17***

Pittsford High School senior Morgan Vidal has been selected as a 2020 Young Entrepreneurs Academy National Semi-Finalist and will compete in the 12th annual Young Entrepreneurs Academy Saunders Scholars National Competition this Saturday, October 17. A softball player at Pittsford Sutherland, she's invented an athletic training vest designed to help hitters develop a more powerful rotational swing and increase the rate of home runs.

**The public can tune in to the semi-finals live stream this Saturday, October 17 at 3:00pm** to support Morgan as she competes to be named America's next top teen entrepreneur. Register here to get the live stream link and details on how to vote for the People's Choice Award: <https://bit.ly/348PUDZ>. Be sure to tune in!

Morgan will be competing against 37 teens from across the U.S. The eight selected finalists will pitch their invention during the **live Finals Round event airing at 7:00pm that day on local TV station**

**13WHAM** Rochester. In the Finals Round, judges will present 1st, 2nd and 3rd place awards, and the viewing audience will select a People's Choice Award winner via text. Be sure to tune in!

Congratulations Morgan on reaching the National Semi-Finals - we will be rooting for you!

### **WHEN BIKING, TAKE CARE AROUND PEDESTRIANS**

#### ***Not all can hear audible warnings - slow down when you pass***

With so many of us using the canal path these days, it is more important than ever to safely share the space. While the 6-foot social distancing rule is important, so too is basic cycling courtesy. Bicyclists must warn pedestrians, whenever approaching them, by using an audible signal, such as a horn, bell, or your voice. But not everyone can hear these signals. Please take care when biking near pedestrians. Provide a warning signal, but also slow down significantly when passing. Please also remember cycling is not allowed along the canal path at Schoen Place - bikes must be walked in this area. By respecting each other and taking care, we can all continue to enjoy our beautiful canal path and remain safe and healthy.

### **MENDON HIGH SCHOOL NAMED A 2020 NATIONAL BLUE RIBBON SCHOOL**

Pittsford Mendon High School has been named a 2020 National Blue Ribbon School. The school was designated by the U.S. Department of Education as an **Exemplary High Performing 2020 National Blue Ribbon School**.

The National Blue Ribbon program honors public and private elementary, middle and high schools that are either among the state's highest performing schools or are among those with the highest performance in closing achievement gaps between their student subgroups and their overall student population.

The U.S. Department of Education invites National Blue Ribbon School nominations from the top education official in all states, and up to 420 schools may be nominated each year. The purpose of the National Blue Ribbon Schools award is to recognize exemplary teaching and learning and affirm the hard work of students, educators, families, and communities in creating safe and welcoming schools where students master challenging content. Congratulations Pittsford Mendon High School students, teachers and staff!

### **ROTARY ELECTION NIGHT DINNER - DRIVE THRU BBQ AT THORNELL FARM PARK, 11/3**

The [Rotary Club of Pittsford](#) continues its long tradition of hosting an [Election-Day Supper](#) by serving drive-thru chicken BBQ dinners this year prepared by Sticky Lips BBQ. Now in its 54th year, the charity event will be held Tuesday, November 3 from 4:30 - 7:00pm at Thornell Farm Park, 480 Pittsford-Mendon Road in Pittsford, just south of Mendon High School.

Tickets for the supper are \$12 and available online at [www.PittsfordRotaryClub.org](http://www.PittsfordRotaryClub.org) or from any Pittsford Rotarian.

"We conduct this event annually to celebrate our precious right and obligation to vote and felt it was important to continue the tradition by taking precautionary measures and making it a drive-thru BBQ event this year instead of a pasta supper," said Pat Mallery, who is coordinating the event for the club. "We'll be observing appropriate safety measures such as wearing gloves and face coverings to provide as safe an environment as possible. Sticky Lips serves some of the best barbeque around and we hope the community responds to help us support local and regional charities while enjoying a great meal."

Rotarians will be on hand to control traffic flow and serve the dinners, which will include a half chicken, baked beans, macaroni salad and cornbread. The first 200 dinners served will receive a Pittsford Farms Dairy coupon for a serving of ice cream, to be redeemed by November 4. A \$7.00 Sticky Lips coupon also will be included with each meal.

All proceeds from this event will be used to support the many charitable organizations that receive assistance from Pittsford Rotary - including the Pittsford Food Cupboard, Habitat for Humanity and the student dictionary project.

### **HEALTHY LAWN CARE FOR THE FALL**

In keeping with the Toxin-Free Lawn challenge that the Town initiated in 2019, here's a reminder that the **fall is a great time for aerating and overseeding**. This thickens up your lawn and helps crowd out weeds naturally. In this region it's the best time to fertilize your lawn as well. Doing it now helps sustain your lawn through the winter and produces lush growth come spring. To avoid fertilizer run-off, don't fertilize before heavy rain is forecast. Fertilizing shortly after a healthy rainfall helps nutrients sink into the soil.

Be sure to continue mowing during the fall. Grass that's too long or too short is more subject to harm from cold weather. Leaving grass clippings on the lawn and mowing fallen leaves with a mulching mower is an environmentally friendly way to strengthen your lawn for the winter ahead.

**Fall is also a good time to re-evaluate your lawn care program** for the following year. If you have a lawn service, carefully assess and discuss your needs with your lawn company. Whether you choose extensive or low maintenance efforts, synthetic or organic lawn care products, caring for your lawn in a responsible manner is important not just to your yard but to the overall environment. If you are interested in working toward minimizing your use of synthetic lawn chemicals or perhaps in going completely organic, you can **find tips to help you cultivate a healthy lawn that's healthy for the environment** - visit the Town website at [www.townofpittsford.org/responsible-lawn-care](http://www.townofpittsford.org/responsible-lawn-care).

### **REMINDERS**

#### **TOWN BOARD MEETINGS ARE STREAMING LIVE**

Pittsford Town Board meetings are now being streamed live; the feed is accessible on any device. Town Board is typically held the first and third Tuesday of the month at 6:00pm at Town Hall. See [www.townofpittsford.org/calendar](http://www.townofpittsford.org/calendar) for meeting dates. To view the livestream, click the [Town Board Meeting live streaming link](#) when the meeting begins. This link can also be found on page two of the meeting agenda. The meeting agenda is posted on the Town's [minutes and agendas page](#) at least two days prior to the meeting. Please note: if you try to log in too early (before the meeting feed is live) you will see an error message; refresh your screen just prior to or at 6:00pm when the board meeting starts and you will be able to view the meeting. As always, ASL interpretation is provided for every Town Board meeting.

#### **ASL INTERPRETER ALWAYS AVAILABLE AT TOWN BOARD MEETINGS**

The Town of Pittsford has an American Sign Language interpreter available at every Pittsford Town Board meeting, to interpret for those who need this service. Those who can't attend a Town Board meeting in person but are planning to watch the meeting's live stream can confirm their need for the interpreter by emailing [comments@townofpittsford.org](mailto:comments@townofpittsford.org). Requests can be made in advance or can be emailed through the first ten minutes of the meeting. An on-demand Town Board meeting video with closed captioning will be available within 48 hours of the meeting; visit [www.townofpittsford.org/home-channel12](http://www.townofpittsford.org/home-channel12) and use the On-Demand links to view previously recorded meetings.

### **UPCOMING COMMUNITY ACTIVITIES IN PITTSFORD**

- [Food Truck Wednesdays at Thornell Farm Park](#), Wednesday, 10/14, 480 Mendon Road, featuring tacos, nacho bowls, fajita bowls and more by [Bay Vista Taqueria](#) and premium shaved ice from [Kona Ice](#), 5:00 - 8:00pm (or until menu items are sold out), Thornell Farm Park, 480 Mendon Road. A different food truck is featured each week offering items for sale, [click here for this week's menus](#); vendor schedule at [www.townofpittsford.org/community-events](http://www.townofpittsford.org/community-events). The event continues each Wednesday through October 21. Please note all attendees are expected to observe appropriate

physical distancing and health safety protocols - face coverings are required when placing and picking up your order.

- [Flu Prevention Partners Flu Clinic for ages 18 and up](#), Thursday, 10/15, 5:00 - 7:00pm, Spiegel Pittsford Community Center, 35 Lincoln Avenue; most major insurances accepted, cost is \$35 each (cash or check) for those with different insurance or the uninsured, [see online flyer for details](#). Contact [info@wpvinc.com](mailto:info@wpvinc.com) or (585) 568-8340 for more info.
- [PTSA Super Sale Trail](#) - garage/yard sales throughout the community to benefit PTSA programs for students, Saturday, October 17, 9:00am - 3:00pm, various locations; [find the Super Sale Trail Map here](#). Information at [www.pittsfordptsa.net/super-sale](http://www.pittsfordptsa.net/super-sale).
- [Town of Pittsford Halloween Spooktacular Drive-In Movie and Costume Parade](#), Saturday, 10/17, Sutherland High School Parking Lot, featuring *The Addams Family* (rated PG); parking lot opens 5:30pm, Costume Parade at 6:00pm, movie will begin at dark. Please observe physical distancing measures, mask required when using restrooms or if within 6 feet of others outside of your quarantine group. Note this event replaces the Family Halloween Fest originally scheduled for 10/18.
- [Red Cross Blood Drive](#), Friday, 10/23, 11:00am - 4:00pm, Spiegel Pittsford Community Center, 35 Lincoln Avenue; [schedule an appointment in advance via www.redcrossblood.org](#) - type in Pittsford Zip code 14534 in search box, scroll to 10/23 blood drive. The Red Cross will be following all COVID-19 guidelines during the blood drive, for more information visit [www.redcrossblood.org](http://www.redcrossblood.org).
- **Halloween "Room on the Broom" Story Walk**, October 26-31, Spiegel Pittsford Community Center field, 35 Lincoln Avenue; stop by the Community Center front desk after completing the walk to pick up a themed craft pack to take home. Physical distancing and face masks required when in contact with others outside of your group.
- [Rotary Club of Pittsford Election Day Drive-Thru BBQ Supper](#), Tuesday, 11/3, 4:30 - 7:00pm, Thornell Farm Park, 480 Mendon Road. Tickets are \$12 each, available online or from any Rotarian; proceeds to benefit local charities and service organizations.

## TOWN OF PITTSFORD BOARD MEETINGS

- **Pittsford Community Library Board**, Wednesday, 10/14, 7:00pm, ONLINE ACCESS via Zoom video conferencing; Virtual meeting instructions can be found on the Town website's Agendas and Minutes page here: [www.townofpittsford.org/home-minutes](http://www.townofpittsford.org/home-minutes)
- **Zoning Board of Appeals**, Monday, 10/19, 7:00pm, ONLINE ACCESS via Zoom video conferencing; information for accessing and viewing the meeting can be found on page 2 of the meeting agenda; the meeting agenda is posted at least two days prior to the meeting on the Town website here: [www.townofpittsford.org/home-minutes](http://www.townofpittsford.org/home-minutes)
- **Town Board**, Tuesday, 10/20, 6:00pm, Pittsford Town Hall Public Meeting Room (lower level), 11 South Main Street, ASL interpretation provided, COVID-19 mask use and physical distancing protocols required; MEETING ALSO WILL BE LIVE STREAMED, information for accessing and viewing the meeting can be found on page 2 of the meeting agenda; the meeting agenda is posted at least two days prior to the meeting on the Town website here: [www.townofpittsford.org/home-minutes](http://www.townofpittsford.org/home-minutes)

## COMMUNITY MEETINGS CALENDAR

- [American Legion Rayson-Miller Post 899](#) **TUESDAY MORNING BREAKFAST MEETINGS CANCELED UNTIL FURTHER NOTICE** due to COVID-19 coronavirus social distancing requirements. Eligible veterans welcome to join the Post; for [membership information](#) visit the [Rayson-Miller Post website](#)
- [Pittsford Rotary Club](#), **WEEKLY IN-PERSON MEETINGS CANCELED UNTIL FURTHER NOTICE** due to COVID-19 coronavirus social distancing requirements; check the Pittsford Rotary Facebook page for virtual meeting information.

- [Pittsford Art Group](#) **MEETINGS CANCELED UNTIL FURTHER NOTICE** due to COVID-19 coronavirus social distancing requirements. For further information, contact PAG president [Margie Mitchell](#)

## Town Facility Closures

**Spiegel Pittsford Community Center** - building is open 8:00am - 5:00pm Monday through Friday and open during program hours evenings and weekends. Senior "Grab N Go" meals will continue every Wednesday and "Curbside Lunch" by Chef Julie is offered every Friday; pickup for both programs is at the bus loop behind the Community Center. Registration for low-risk activities and virtual programs begins in advance of each session. See Program Info & Registration link at [www.townofpittsford.org/home-recreation](http://www.townofpittsford.org/home-recreation). Programs will continue to open as we receive further guidance.

**Pittsford Community Library** - the Library is now open for limited hours and services; enter from the parking lot entrance. The Library also has many online resources, programs and activities for all ages to enjoy. For current Library hours, services, resources, and other updates, visit the Library's update page at [www.bit.ly/pclupdates](http://www.bit.ly/pclupdates). For virtual children's programming check the Library's Facebook page [www.facebook.com/PittsfordLibrary/](http://www.facebook.com/PittsfordLibrary/). The Book Drop return area is open; please only deposit returned books; for information on book sale donations visit [www.pittsfordlibraryfriends.com](http://www.pittsfordlibraryfriends.com). Regular due dates for all materials have resumed; check your receipt or your Library account for exact due dates. Low contact pickup of Library materials is available for Monroe County Library System cardholders.

**Town Hall** is open to residents by appointment only; in-person meetings will be limited and allowed only when absolutely necessary. Calls should be made to the department related to the inquiry. Town Hall remains staffed to handle business online and by mail, phone, email and the "drop slot" to the right of the front door of Town Hall.

**Town Clerk:** All services of the Town Clerk are available online, by mail, phone and email. If necessary, an appointment can be arranged. Contact at 248-6214 or [ldillon@townofpittsford.org](mailto:ldillon@townofpittsford.org), mail materials to Pittsford Town Clerk's Office, 11 South Main Street, Pittsford NY 14534. Services info at [www.townofpittsford.org/home-clerk](http://www.townofpittsford.org/home-clerk).

**Town Court:** Pittsford Town Court sessions are being scheduled on a limited basis. Town Court staff are available via phone and email Monday - Friday from 9:00am - 5:00pm; call (585) 248-6238 or email at [pdromgoole@townofpittsford.org](mailto:pdromgoole@townofpittsford.org). Visitors must follow appropriate health safety and social distancing requirements for Court appearances and Court Office visits.

**All Town Playgrounds:** residents may use Town playgrounds at their own risk, as it is not possible for the Town to keep equipment appropriately sanitized after every use. Those using Town playgrounds are expected to observe COVID-19 social distancing and hygiene protocols.

**All Town Parks:** all Town parks are open; all courts are open, all athletic fields are open to groups of 25 individuals or less, and all trails and walkways are accessible. Those using Town parks are expected to observe COVID-19 social distancing and hygiene protocols.

**Thornell Farm Park:** the park is open and per State requirements, all grass and turf sports fields are open to group activities of 25 individuals or less; the tennis courts, trails, walkways and the playground are open to residents. COVID-19 social distancing and hygiene protocols are required.

**King's Bend Park Lodges:** the lodges are open for reservations; per State and Federal governments all COVID-19 safety guidelines must be followed while at the lodges. Lodge capacities will adhere to New York State COVID-19 guidelines. Please note COVID-19 social distancing and hygiene protocols are required.

**The Mile Post School:** the building is closed to the public until further notice, as the site is being used as a Public Works crew operation center.

**Building Department:** As of May 15, 2020 the Governor has begun the phased reopening of New York State. The Town of Pittsford and the surrounding Finger Lakes region have met the criteria set by the Governor to reopen. Construction is included in Phase 1 of the reopening plan. As construction moves forward, all COVID-19 safety guidelines set by the State and Federal governments must be followed while on the job site. To protect the community and limit the spread of COVID-19, the Town of Pittsford has altered accordingly its inspection and permitting procedures. See the Town of Pittsford COVID-19 Building Inspection Procedures for details; additional information can be found here: New York State Construction Guidelines. For more information contact Town of Pittsford Building Inspector Mark Lenzi at [mlenzi@townofpittsford.org](mailto:mlenzi@townofpittsford.org) or call the Town Building Department at 585-248-6265.

**Town Public Works** - Highway, Sewer and Parks Departments: All operations continue. Crews in these departments are following hygiene and social distancing protocols in light of the COVID-19 threat.

### **Monroe County Services at Town facilities:**

The County has suspended until further notice Passport Services at Town Hall and Mobile DMV service at Pittsford Town Court. Per the NYS Department of Motor Vehicles, all driver licenses, learner permits, non-driver identification cards, vehicle registrations and vehicle inspections scheduled to expire on or after March 1, 2020 are extended until further notice and all temporary registration documents are valid until further notice. This extension does NOT apply to insurance coverage - motor vehicle liability insurance coverage must be maintained at all times during the extension period. Find updated information for Monroe County DMV here <https://www2.monroecounty.gov/clerk-COVID-19>.

Further information and updates can be found at [www.townofpittsford.org/covid-19info](http://www.townofpittsford.org/covid-19info).

## **COVID-19 Coronavirus Information Links**

Further Town of Pittsford COVID-19 coronavirus information and updates can be found at [www.townofpittsford.org/covid-19info](http://www.townofpittsford.org/covid-19info).

[Pittsford Central School District COVID-19 Coronavirus Updates](#)

You can find information on COVID-19 coronavirus at the County Health Department's website: <https://www2.monroecounty.gov/health-index.php>.

Additional information about business closure requirements throughout Monroe County can be found on the County's Website: [www.monroecounty.gov](http://www.monroecounty.gov)

The CDC also has information on its website at <https://www.cdc.gov/coronavirus/2019-ncov/about/share-facts-stop-fear.html>.

In addition, the CDC has information relevant to anyone planning to travel outside of the United States: [https://www.cdc.gov/coronavirus/2019-ncov/travelers/index.html?deliveryName=USCDC\\_2067-DM20785](https://www.cdc.gov/coronavirus/2019-ncov/travelers/index.html?deliveryName=USCDC_2067-DM20785).

**If you have been forwarded this eNews issue and wish to subscribe, visit**

[www.townofpittsford.org/enews](http://www.townofpittsford.org/enews)



TV-12 PITTSFORD CABLE CHANNEL 1303 is on seven days a week. Click [HERE](#) for schedule.

### **Quick Links**

[Photo Gallery](#)

[eNews Archives](#)

[Supervisor's Column](#)

[Website](#)

[Contact Us](#)