



THE PITTSFORD MESSENGER

www.townofpittsford.org • October 2016 | Volume 22 | Issue 3

From the Supervisor: Vote October 18 to upgrade our Community Center



Bill Smith
Town Supervisor

Our Town Board has recommended an upgraded, expanded and completely redesigned Spiegel Community Center as the best option for a quality community center at reasonable expense. A new building on a different site would cost over \$15 million. Merely to fix things at the existing building will cost \$6.1 million. For \$3 million more, at a cost per average household of \$69 per year over 15 years, the recommended plan gives us everything we need. It saves us \$6 million as compared to constructing a new building. It creates a modern facility in a landmark building in the heart of Pittsford.

Our upgraded and expanded Spiegel Community Center will offer:

- ✓ **A complete interior redesign** that will allow for significantly better use of the building's existing square footage, with increased and improved space for classes, meetings, and programs such as child care, afterschool and day camp.
- ✓ **A building expansion** that includes a new ground-level main entrance, a large lobby with a community lounge, and improved access for those of varying abilities.
- ✓ **Greatly improved and expanded parking.**
- ✓ **Infrastructure upgrades** that bring long-term cost savings in maintenance and operations.

- ✓ **A modernization and aesthetic upgrade** and remodeling of the building, to create a more pleasant environment. And better accommodation for meeting space and for our community center programs.
- ✓ **A new and permanent home for the Senior Center – located within the remodeled Spiegel building – with improved access and amenities** and substantially expanded senior program space. This includes a dining room with fully-equipped kitchen, a senior lounge,

Continued on page 2

The new Senior Center at Spiegel

Upgrading and modernizing our Spiegel Community Center will provide a new, bigger, better and permanent home for the Town's Senior Center.

- ✓ **Improved access for seniors:** the new ground-level entrance features a lobby with a gently sloping ramp, a double-capacity elevator, a half-floor flight of stairs, and a chair lift at the stairway – each providing easy and direct access to the Senior Center, a great improvement over the outdoor ramp and outdoor stairway to the current Senior Center. All senior facilities will be on a single floor, closest to the building entrance.

- ✓ **Expanded Senior Center space:**

4,098 sq. feet – dedicated senior program space in new Senior Center at Spiegel

2,723 sq. feet – program space at current Senior Center location

We'll have a Senior Lounge/exercise room and a dining room that seats up to 112, featuring a fully-equipped kitchen. New to the Senior Center, when it moves to Spiegel, will be two dedicated full-sized exercise/program rooms. All facilities of the new Senior Center at Spiegel will be on one floor, with entrance closest to the reserved Seniors parking area. Seniors will also have access to all the resources of the entire Community Center.

- ✓ **A permanent home:** we will finally have permanent and complete control over the

design and use of our Senior Center. As of March, 2017 the current Senior Center lease allows the landlord to move the center anywhere in the building. The lease expires in April, 2019 with no guarantee of renewal.

- ✓ **Improved parking reserved for seniors:** the Community Center's expanded and improved parking will feature reserved parking closest to the new ground-level entrance for Senior Center participants.
- ✓ **A better and upgraded location:** The current Senior Center is accessible by car only from Monroe Avenue at one of its worst traffic choke-points. To drive to the new Senior Center at Spiegel you can enter Lincoln Avenue by any of three routes: from Main Street, from Sutherland Street, and from Washington Street. Locating the Senior Center within the redesigned and expanded Community Center moves it away from one of the Town's worst traffic problem areas.

All current Senior Center staff will make the move to the new Senior Center at Spiegel. They'll be there to greet you as always, as will Elderberry Express and its office.



The new ground-level entrance of the proposed Spiegel Community Center upgrade, redesign and expansion project.

If the Spiegel Community Center project is approved at the **October 18** public vote, we can look forward to creating a new Senior Center that offers significant improvements for the benefit and enjoyment of all our senior residents.

Most important of all is something that transcends the bricks and the mortar, the furnishings and fixtures. The location may change, but this won't: that when you arrive at Pittsford's Senior Center, you'll know you are in the company of friends.

**VOTE on upgrading our
Community Center is
Tuesday, Oct. 18, 7am-9pm,
at King's Bend Park.**

See inside for voting and project details.

SPIEGEL COMMUNITY CENTER COMPLETE UPGRADE, REDESIGN & EXPANSION PROJECT

The upgrade, redesign and expansion of the Spiegel Community Center will provide a **complete interior redesign** for increased and improved space for classes, meetings and programs; a **building expansion** including a new ground-level entrance, lobby and community lounge with improved access for those of varying abilities; greatly **improved and expanded parking**; maintenance and operations cost-savings via **infrastructure upgrades**; a more pleasant and accommodating environment via facility **modernization and aesthetic upgrades**; and a significantly **improved and permanent new home for the Senior Center**.

The \$9.3 million project cost is \$6–7 million less than the cost of building new and a reasonable \$3 million more than the cost for repairs necessary just to keep the doors open. The existing building structure has been thoroughly examined and is sound enough to last another 100 years. A designated Pittsford landmark, the Spiegel Center is built of solid masonry; it would cost over \$30 million to construct such a building today.

Vote!

October 18, 2016 • 7:00 AM – 9:00 PM
King's Bend Park, North Lodge • 170 W. Jefferson Road

From the Supervisor (Continued from front page)

and two dedicated, full-sized exercise/program rooms. There's reserved parking for seniors near the ground-floor building entrance, and vastly improved access to the Senior Center as compared to the current Senior Center location.

Our proposal is the right choice for Pittsford's community programming needs. From it we get an upgraded, modern facility at a modest cost per household of \$69 per year over 15 years for a Pittsford home of average assessed value (average assessed value is \$275,075).

It's not about which town can build the biggest community center, or the most expensive. It's about providing a facility suitable for Pittsford's recreational programming goals.

This proposal saves \$6 million over building new. It allows us to offer our current programs for years to come, with room for their expansion. It preserves the current balance of public and private opportunities for recreation in Pittsford. It fits the Town's recreational programming goals.

The referendum takes place on **October 18**. Please support this modest and reasonable way forward to a community center worthy of Pittsford.

The bright new lobby and community lounge at the ground-level entrance includes a gently sloping ramp, a double-capacity elevator, a half-floor flight of stairs, and a chair lift at the stairs to make building access easy for those with differing abilities.



The new Senior Dining Room features a fully equipped kitchen, plenty of room for lunch programs, and seating for up to 112.



Our After School Program participants will have a great time in their completely remodeled program areas designed for fun activities with friends.



Find info and updates at www.townofpittsford.org/community-center-project.

SPIEGEL COMMUNITY CENTER COMPLETE UPGRADE, REDESIGN & EXPANSION PROJECT

The Spiegel Community Center serves our community

The Spiegel Community Center building was constructed in 1916 as the Lincoln School, which served Pittsford children from kindergarten through 12th grade. It has a distinguished history of service to our community. Since the early 1970s, the Spiegel Community Center has been home to many of the Pittsford Recreation Department's program offerings and provides meeting space for community members and community organizations. Our Spiegel Community Center:

- Offers affordable programs and services with high standards of quality.
- Offers many enrichment classes (arts and crafts, personal development, first aid, financial planning, SAT Prep, etc.), including many FREE to the public.
- Serves as a community meeting place, a child care center, a teen center, an after school facility, a gymnasium, a summer camp, a classroom, a theater, and a dance/martial arts/aerobics studio.
- Is open to all and does not require a membership.

Now it needs an upgrade! Vote **October 18**.

Public Vote October 18 seeks to fund Community Center project

Bond financing will provide Spiegel Project Funding

- ✓ Completion of the Spiegel Community Center Upgrade, Redesign and Expansion project depends upon public approval of bond financing for the project.
- ✓ Cost would be \$69 per year over 15 years for a home of average assessed value (average assessed home value = \$275,075).
- ✓ The public vote is scheduled for Tuesday, **October 18, 2016** from 7AM – 9PM at the North Lodge of King's Bend Park, 170 W. Jefferson Road.



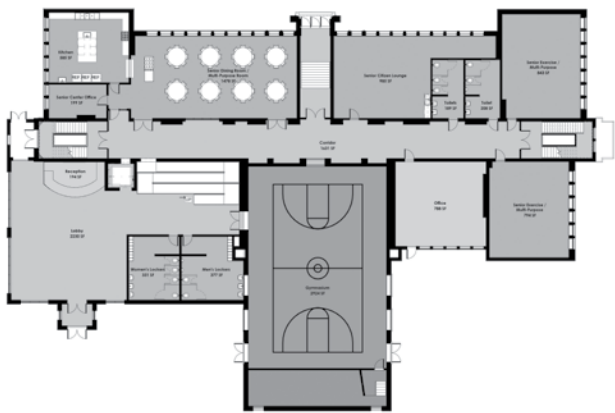
VOTING ON:

Financing an upgraded, modernized and expanded Community Center

COST:

\$69 per year over 15 years for a home of average assessed value

Total bond amount: \$9.3 million



Proposed Spiegel floor plans, site plan, and all of the concept renderings can be found online at www.townofpittsford.org/community-center-project.

SPIEGEL CENTER PROJECT INFO



SCAN THE CODE –
GET THE eNEWS –
STAY INFORMED!



Sign up for our weekly eNews. Use the side-tab on the Town website or scan the QR code at left with your smartphone. **We never share your email address**; it is used only for the eNews and urgent/emergency Town notifications.

2016 Pittsford Food Truck & Music Fest



Many thanks to NY State Senator Rich Funke for sponsoring the fireworks at our 2016 Pittsford Food Truck & Music Fest, held September 10 on Main Street. Thanks also to Event Partners Pittsford Federal Credit Union and Wilmore, and Event Sponsor ESL Federal Credit Union.

Voting eligibility info

To vote in the **October 18** referendum regarding proposed bond financing for the Town's Spiegel Community Center Upgrade, Redesign and Expansion project please note the following information:

- ✓ US citizen age 18 or over.
- ✓ Pittsford (Town or Village) resident for at least 30 days prior to vote date.
- ✓ Prior voter registration not necessary.
- ✓ **If not a registered voter**, proof of Pittsford residency, including a government issued ID (valid driver's license or passport) AND a mail item proving residency for more than 30 days prior to the vote date is required.
- ✓ No absentee ballots available for this vote.

The vote will be held at the North Lodge at King's Bend Park, 170 W. Jefferson Road. Voter sign-in will be organized by residents' last names.

Thanksgiving holiday hours

Town of Pittsford offices, facilities, and services – including Town Hall, the Spiegel Community Center, the Van Huysen Senior Center, the Highway, Parks and Sewer departments, and Town Court – will be closed on Thursday and Friday, November 24-25 in observance of the Thanksgiving holiday. However, regular Town leaf collection services will be provided on Friday, November 25.

The Pittsford Community Library will close at 5PM on Wednesday, November 23 and will be closed on Thursday, November 24; it is open regular hours (9AM – 6PM) on Friday, November 25.

In case of an emergency requiring Town of Pittsford services during holiday closure, please call (585) 248-6212.

King's Bend Park lodge reservations for 2017

Pittsford residents may submit requests (two per household) beginning 10/24 and through noon on Saturday, 10/29, 2016 for reserving a lodge at King's Bend Park for the 2017 season. Request forms are available on the Town website and at the Spiegel Community Center and may be dropped off or mailed to the Spiegel Community Center (35 Lincoln Avenue). Multiple requests for a date will be determined by a lottery held October 31; those selected will be notified and have 10 business days after notification to submit payment and secure the reservation. The Town will notify those not selected and offer alternate dates for consideration.

After all initial requests have been awarded or resolved, forms from residents for additional reservations may be submitted and will be accepted through the month of December. Online requests cannot be taken nor awarded until after the lottery reservations are confirmed. Non-residents may apply for 2017 reservations beginning Monday, January 2, 2017 at noon.

New interactive yard debris collection map

Yard debris is collected by quadrant (NW, NE, SE, SW) Monday through Thursday each week by crews that move clockwise throughout the Town. We've made it easier to find your yard debris collection day – use our **NEW interactive online Yard Debris Collection Day Street Map**. Find it under the "Services" tab on the Town website home page.

The Town's loose brush and branch collection program ended on 10/6 and **containerized yard debris pickup is underway**. At this time, please be sure to tie cuttings (up to three feet in length) in bundles and place all grass clippings, weeds, vines, smaller yard debris, etc. into a reusable container or paper bag. For more information, see our Yard Debris page link under the "Services" tab.

Leaf collection begins October 17

Town leaf collection begins October 17. Our crews will be in each neighborhood approximately every two weeks to remove loose leaf piles and recycle them into leaf mulch. To keep our roadways safe for all, aid in recycling, and to avoid potential injury to our crew members and damage to our equipment, please be sure to place loose leaf piles at the edge of the roadway but behind the curb, and separate out all sticks, brush, yard clippings and other debris into reusable containers or paper bags. Please note loose brush is not picked up during leaf collection season; it must be containerized. Our **online Leaf Collection App** will show you when leaf crews will be in your neighborhood. Find it and more info on our Leaf Collection page under the "Services" tab on our website.

SPIEGEL COMMUNITY CENTER PROJECT



Mary Gehl Doyle
Town Councilwoman

From your Councilwoman: Mary Gehl Doyle

Time is now to create a true community center

Pittsford residents are about to make an important decision affecting the future of our Community Center and the recreational programming we offer. Your vote on October 18

will determine whether we move ahead with the complete upgrade, redesign and expansion of our Spiegel Community Center, providing a modern, efficient, and welcoming facility at a cost of \$9.3 million, or we attempt to "make do" with the current facility, spending \$6 million to complete the minimum required repairs needed to keep the facility open, with no improvements.

While other towns may focus on a "big box" or sports complex approach to obtain a recreation center that greatly expands their recreation programming – and their operating expenses – our Town Board seeks to create a top-notch facility that will serve our current recreation programming needs, with room for reasonable growth in the future. Yet our vision goes beyond creating a place for programs, meetings and classes. We envision a true community center, not merely a recreation center. A place where our residents can connect while enjoying our

programs and meeting spaces. A place where it is possible to relax and catch up with friends, share like interests, and make new acquaintances.

As you may know, the Town Board took several years to carefully consider many different options; among them was to build a new facility on open space within the Town but remote to the Village. Several factors made it clear that upgrading and expanding Spiegel is the best choice for our recreation needs and for our community. We are not looking to vastly increase our program offerings, therefore a properly redesigned and expanded Spiegel Community Center will have the ability to provide all we need in a community center. We can begin the project immediately instead of taking a year or more to research available open lots of 4-5 acres and then purchase a suitable property. Such ability to move quickly is critical, because some of the repairs to Spiegel need immediate attention. We can create a new, one-of-a-kind, first-class facility inside a restored historic landmark, centrally located in the heart of our community. This preservation/redesign plan is in stark contrast to a new build proposal that would necessarily diminish our natural open space which is so valued by the members of our community.

The most eye-opening argument for me is that we can create the top-quality community center we deserve and need while saving \$6-7 million compared to building a new facility.

Another benefit to upgrading and expanding Spiegel that I find especially inspiring: we will create a beautiful and convenient permanent home for our Senior Center in the facility and therefore will, for the first time, have the ability to offer multi-generational programs onsite that can build connections between our seniors and our child care and youth participants.

I've been an avid Spiegel Center user for the past 10 years, participating in everything from aerobics and dance to dog obedience and craft classes. I've seen firsthand our staff's dedication to excellent customer service, their creativity in program scheduling to make the best use of limited resources, and their unwavering commitment to providing programs that are enriching and enjoyable for all members of our community. They have done all they can to make the best use of the Spiegel Center in its current state; I believe it is time to transform the Spiegel Community Center into a facility that matches the high quality of our recreation staff and programming.

If you have a hard time envisioning what we can do to make Spiegel a truly first-class community center, I invite you to enter into the discussion! Our Town Board members and staff will be glad to speak with you about our current concept plans, and, should the project be approved, we want to hear your ideas for finalizing these plans.

The new Senior Lounge will be a warm and friendly place for socializing and senior programs. The lounge, senior dining room, and the two new dedicated senior exercise and program rooms are all on the same floor.



Senior Lounge

The Spiegel Community Center building structure is sound; built of solid masonry, it would cost over \$30 million to construct such a building today.

The completely remodeled Child Care area will offer a bright and cheerful place for our youngest residents.



Childcare Room

The \$9.3 million project cost is \$6-7 million less than the cost of building new and gives us the top-quality community center we deserve and need.



11 South Main Street
Pittsford, New York 14534
(585) 248-6200

Supervisor

William A. Smith, Jr.

Town Council

Jared C. Lusk

Deputy Town Supervisor

Mary Gehl Doyle

Kate Bohne Munzinger

Matthew J. O'Connor



Printed on
recycled paper

THE PITTSFORD MESSENGER | OCTOBER 2016

WWW.TOWNOFPITTSFORD.ORG

Find **October 18 vote information** and complete **project information and updates**, including concept renderings and floor/site plans, on our

Spiegel Community Center Project Page

www.townofpittsford.org/community-center-project



**Chamber's Candlelight Night
is December 6**

Save the date for the Pittsford Chamber of Commerce's 45th annual Candlelight Night. Enjoy shopping, holiday treats and more in Pittsford Village on Tuesday, December 6 from 5-8pm. Find more information at www.pittsfordchamber.org.

GO SOCIAL WITH THE TOWN OF PITTSFORD!

Stay up to date by following the Town of Pittsford on social media. You can find us on:



Town of Pittsford



@pittsfordtown



pittsfordtown

TOWN OF PITTSFORD'S

**Family
Halloween
Fest**

*A trick-or-treat
alternative for kids!*

Sunday, October 23 • 2-5pm

St. John Fisher Student Life Center

Treats, games, music & more!

Free admission, but please bring one canned good item
per person to benefit the Pittsford Food Cupboard

More info www.townofpittsford.org/halloweenfest

