

# THE PITTSFORD MESSENGER

Town of Pittsford Community Report

Volume 9 • Issue 4

Autumn 2003

## Library vote scheduled for October 7

On October 7, you will have the opportunity to vote “yes” or “no” to the following question:

*Shall the Bond Resolution adopted by the Town Board of the Town of Pittsford on August 5, 2003 authorizing an appropriation of \$9,000,000.00 to pay for the cost of acquiring, constructing and equipping a new library facility at the site of the Town's existing library facility at 24 State Street, including the acquisi-*

*tion of two parcels of land located adjacent thereto, the demolition of the existing library facility and the improvements on such adjacent parcels, the construction of surface parking areas and other related site improvements, and the issuance of \$9,000,000.00 in serial bonds of the Town of Pittsford to finance such appropriation, be approved?*

This edition of The Pittsford Messenger is devoted to providing you with

information that we hope will help you understand some of the issues we face with the current library and what is being proposed in the construction of a new facility.

The current proposal is one that has evolved over the last eight years of discussion on this issue. In May 2002, a Citizens Advisory Group submitted their recommendations to the Town Board. Their work helped determine the  
*(Continued on page 2)*



[www.townofpittsford.com](http://www.townofpittsford.com) • [librarydesigns@townofpittsford.com](mailto:librarydesigns@townofpittsford.com)

### Leaf Collection

The Department of Public Works is gearing up for the start of the leaf collection season. Please consult your Spring/Summer Lawn Debris Recycling brochure for a schedule of collection in your neighborhood. This information can also be found on the Town Web site at [www.townofpittsford.com](http://www.townofpittsford.com) and on Cable channel 12.

Neighborhood signs will be utilized again this year to notify residents in advance of leaf pick-up. *Look for these signs and rake ahead!*

Please be advised that collection of loose brush and branches will end on Thursday, October 30. Bagged and containerized grass, weeds and cuttings will be collected through December 24.



### Child Care available at community center

Child care is available at the Spiegel Community Center, 35 Lincoln Avenue, for infants and toddlers 18 months to 5 years of age.

The Child Care Program is open to both residents and non-residents. Reservations are required. Children may stay up to 3 hours per day. For more information call 248-6295.

## Pittsford community library

*(Continued from page 1)*

vision for future library services and the size of the facility we would need.

In February of this year the Town Board made the commitment to keep the Pittsford Community Library in its current location on State Street. The project as proposed is significant in that it will improve our library services, will strengthen our Village center and will provide needed parking improvements.

Over the last several months, a wide representation of stakeholders in the community have been involved in helping turn ideas into schematic designs for the building and site. Over one hundred residents and business people participated in an April 2003 design workshop. The Village Mayor has been an active part of the design team. Library staff has been actively involved in the development of floor plans and library services.

The result is a plan for a facility that will provide quality library services that will also serve as an important gathering space in the community.

Specific features of the new library incorporate the ideas and suggestions of

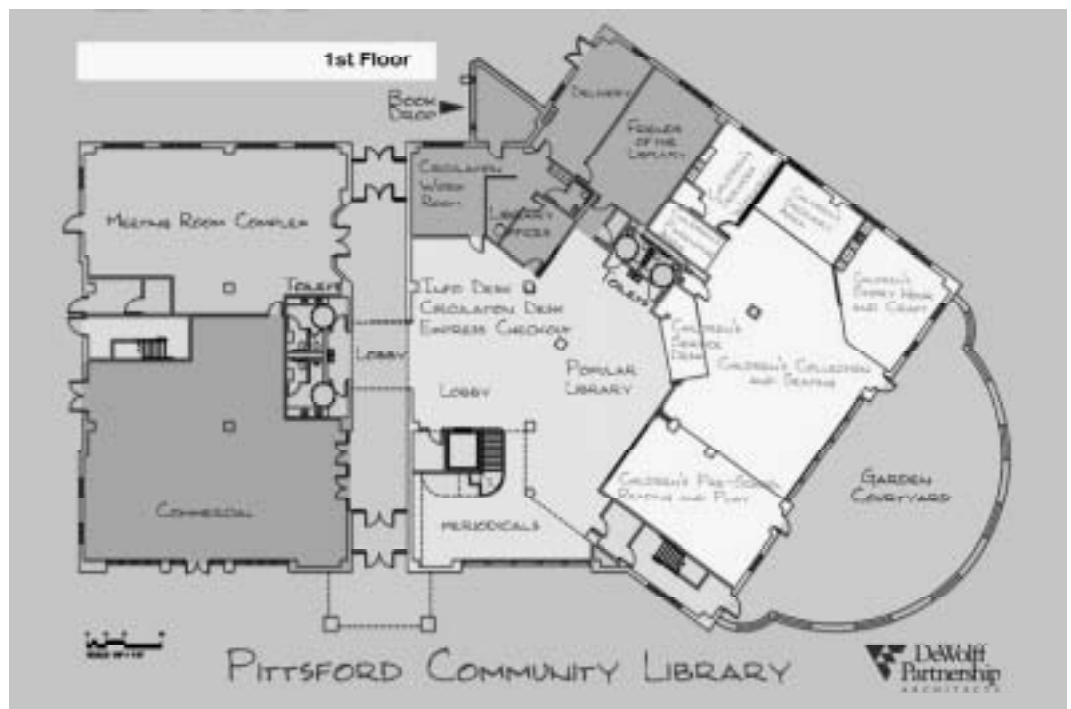
those who participated in the evolution of the library plan. A drive-up book drop will be accessible 24 hours a day, 7 days a week. The children's library and young adult home-work center are designed to encourage life-long learning. Meeting rooms for community use are part of the plan. Windows will provide natural light and views of the canal and garden. Having a cafe in the same building will enhance the concept of the library as a community gathering place by providing the popular mix of coffee and books.

If you would like to share an idea about the project, your thoughts are welcome at: [librarydesigns@townofpittsford.com](mailto:librarydesigns@townofpittsford.com).

The Town supports community collaboration and is committed to moving forward with a plan that reflects the best interests of all stakeholders—residents, local businesses, the school district and the village.

We look forward to seeing you at the polls on Tuesday, October 7.

Submitted by:  
William A. Carpenter, Supervisor  
Town of Pittsford



## New library will offer exciting new services and appealing spaces

The new library building will provide much needed space to shelve the current collections of fiction and non-fiction books, books on tape and CD, videos, DVDs, magazines and reference materials. A new e-commons will contain networked computers providing access to the Internet, online research and financial databases, and a variety of other electronic resources.

One focal point of the new library will be the children's area, designed to engage the eagerness of children to explore and learn. This space will contain a storyhour and craft room, a preschool area, and a computer discovery room. Books for pleasure reading and school assignments for elementary students will be shelved here. Child-size furniture and fixtures will help make this a space children will love.

For the convenience of parents and those who are looking for popular materials, the new books and audio visual materials such as DVDs, videos, books on tape and CD will be located in the middle of the first floor, adjacent to the children's library.

A variety of seating will be scattered throughout the building. Study tables and carrels in the quiet area on the second floor will overlook the canal. Comfy chairs will provide a place to relax and read in the magazine area, around the fireplace, and overlooking the garden. Seating in the walled garden will encourage taking advantage of every moment of good weather.

The young adult homework center is a comfortable and inviting space where teens can study individually or in small groups.

There will be meeting rooms for library programs and community use. The large meeting room on the first floor will seat 150 people and can be used even when the library is closed. A smaller conference room will accommodate groups of 15 to 20. Two study rooms on the second floor will allow up to 6 people to work together on projects without disturbing other library users.

The benefits of a new library building will be seen not only in library service, but also in community pride.

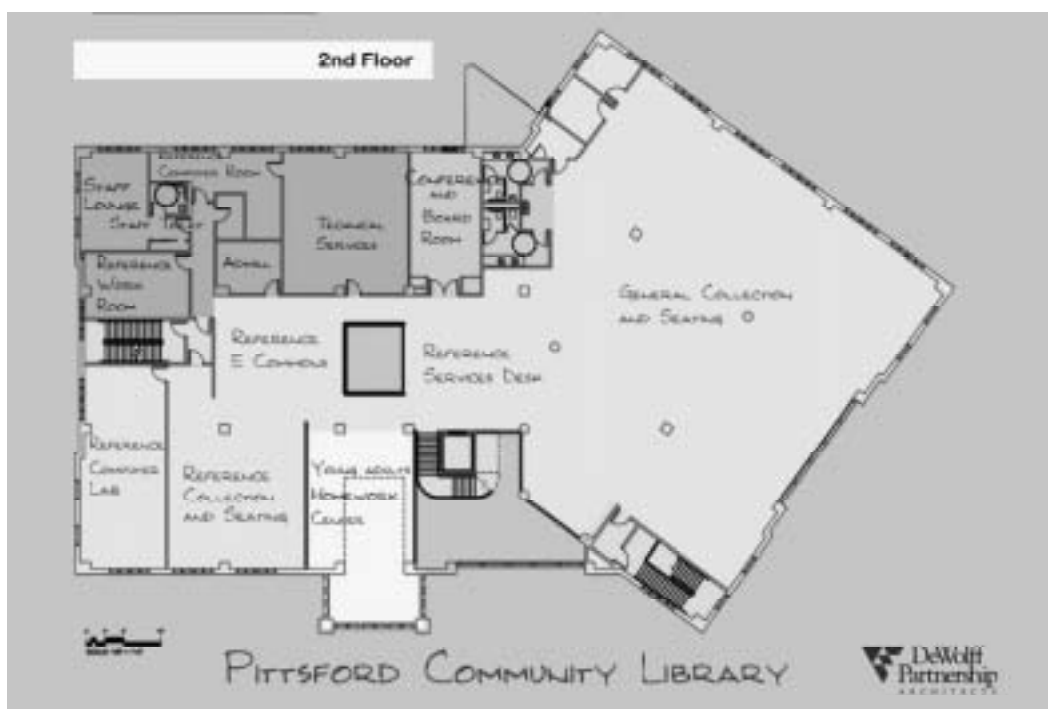
### School taxes due October 1

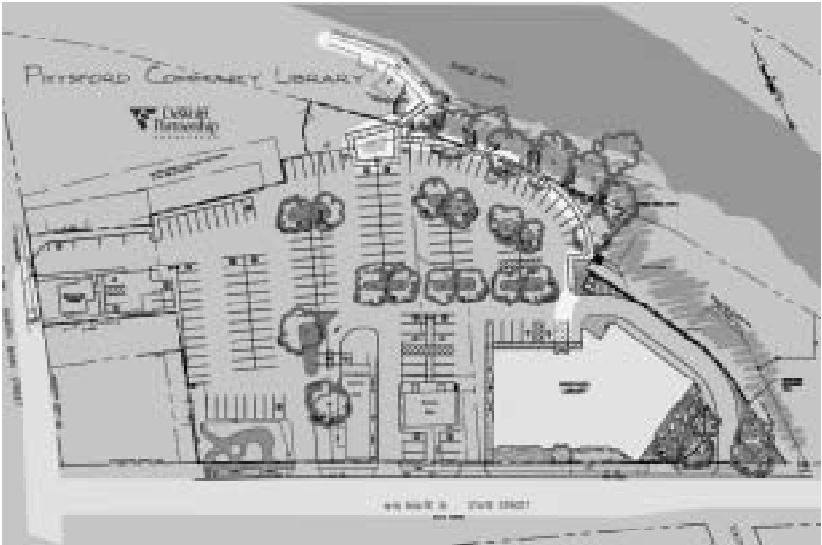
2003 School tax bills are due in full on Wednesday, October 1. Payment can be mailed (postmarked on or before the payment due date) or paid in person at the Town Clerk's Office, 11 South Main Street. A payment schedule is available for those who prefer to distribute payment over 3 installments. Details are on the tax bill.

If you have questions about your bill or payment options, please call the Town Clerk's Office at 248-6210.

### Aquatic programs offered by Pittsford Recreation Dept.

Registrations for fall aquatic programs are currently being accepted. Swim lessons are available for kids ages 1 year and older. Adults who want to learn to swim can also find a class. Looking for a low impact aerobic workout? Try Aqua Aerobics to firm and strengthen muscles. The adventurous swimmer will enjoy the thrill of the Discover SCUBA class or the SCUBA Seal Team program. If you are looking to spend some quality time with your family in the pool join Family Open Swim. Regardless of your age, skill or comfort level in the water, there is an aquatic program for you! For more information call 248-6280 or go online to [www.townofpittsford.com](http://www.townofpittsford.com).





## Voting procedures

### Residents go to the polls on October 7

On August 5, 2003, the Pittsford Town Board adopted a resolution determining that a referendum would be conducted on October 7, 2003 asking residents to authorize a \$9,000,000 appropriation to construct a new community library. (Please see cover story for complete wording of the proposition.)

The special election will be held at Pittsford Fire District Station #2, 465 Pittsford-Mendon Road. The polls will be open from 7:00 a.m. to 9:00 p.m. All eligible voters must be:

- 1) a resident of the Town of Pittsford for at least 30 days
- 2) 18 years of age or older
- 3) a citizen of the United States of America

### Where to get more information

A videotape presentation of the proposed Pittsford Community Library Improvement Project can be seen on Cable channel 12. The 30-minute segment features the schematic designs and site plans with commentary by architect Rick Perry and a discussion of next steps for the community by Bill Carpenter. Look for the videotape at the following times:

- Sundays at 2:30, 4:30 and 7:30 p.m.
- Mondays and Tuesdays at 9:30 a.m., 2:30 and 7:30 p.m.
- Wednesdays at 9:30 a.m., 2:30 and 4:30 p.m.

The library designs and site plans can also be found on the Town Web site. Go to [www.townofpittsford.com](http://www.townofpittsford.com) and click on the homepage link to the library project. And when you visit the Pittsford Community Library at 24 State Street, be sure to view the exhibition of the schematic drawings, site plans, and artist's rendering on display near the main desk.

Resident comment regarding the proposed library project can be submitted to: [librarydesigns@townofpittsford.com](mailto:librarydesigns@townofpittsford.com).

# Town facilities

## King's Bend Park opens its gates

A public Open House on Saturday, September 13, signaled the official opening of King's Bend Park, 170 W. Jefferson Road. The unveiling of the town's newest park was held in conjunction with "Pittsford Celebrates," an annual community-wide event.

King's Bend Park is a family use facility offering lawn space, picnic areas, pathways and benches. Two winterized lodges are located on the site for year-round enjoyment of the park.

Park hours of operation are 9:00 a.m. - 10:00 p.m. Lodges open at 10:00 a.m.

The North Lodge will accommodate up to 99 persons; the South Lodge is perfect for smaller gatherings of 50 or fewer. Both lodges are equipped with a gas fireplace, ceiling fans, picnic tables and benches, a kitchenette (sink and stove), and a coat closet. Two public restrooms are located at the end of each lodge. Reservation fees are as follows:

### South Lodge:

Resident fee ..... \$ 60.00/day  
 Non-resident fee ..... \$120.00/day

### North Lodge:

Resident fee ..... \$ 75.00/day  
 Non-resident fee ..... \$150.00/day

The Town Web site has viewable copies of the following information contained in the reservation packet:

- Lodge Reservation Information
- the Lodge Reservation Form
- General Rules and Regulations for lodge and/or park use

Reservation packets are available at the Spiegel Community Center, 35 Lincoln Avenue, Town Hall, 11 South Main Street, and the Pittsford Community Library, 24 State Street.

Open registration for Pittsford residents will begin on Saturday, December 6. Residents may come to the Spiegel Community Center from 10:00 a.m. to 4:00 p.m. to register for lodge use. On subsequent days, lodge reservation forms can be mailed to or dropped off at the community center. Reservation requests from non-residents will be taken starting on January 2. (NOTE: Reservations for the remainder of 2003 are currently being accepted.)

For further information about King's Bend Park go to the town Web site at [www.townofpittsford.com](http://www.townofpittsford.com) or call the Town Recreation Department at 248-6280.



# Town Family Halloween Fest

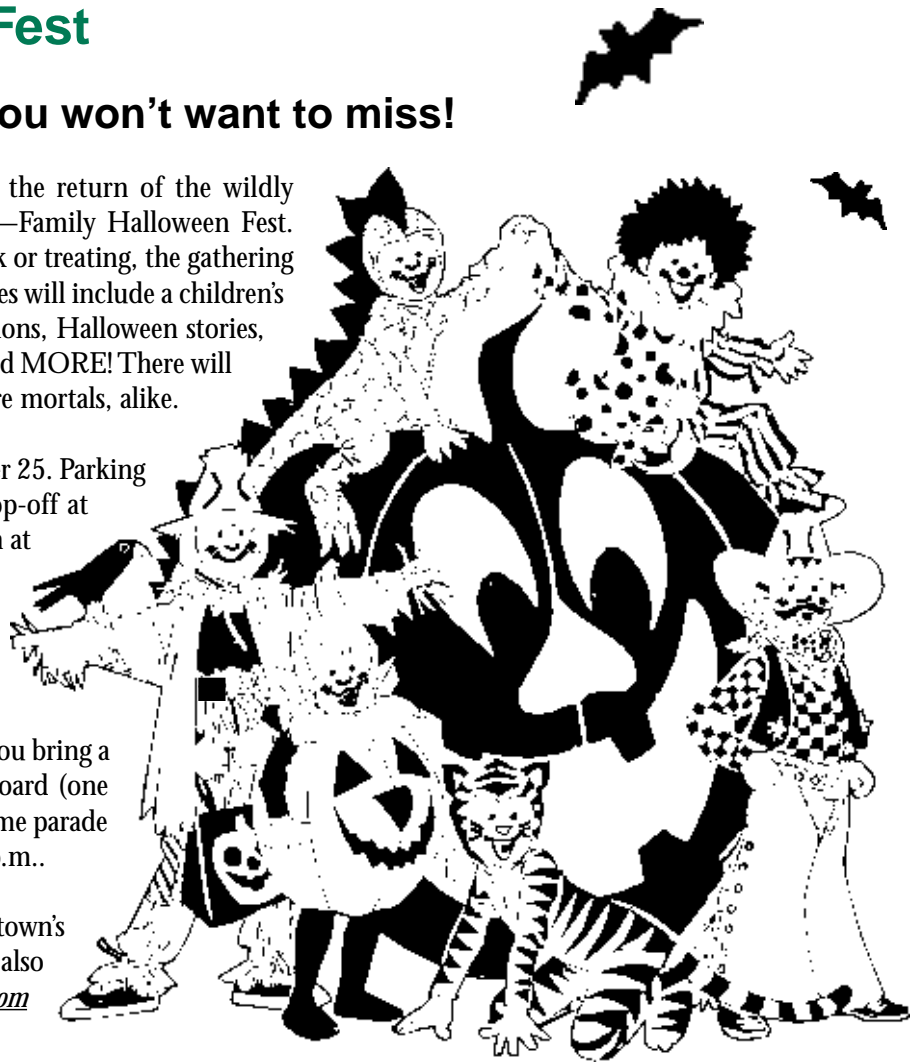
**A frightfully fun celebration you won't want to miss!**

**T**he Town of Pittsford is proud to announce the return of the wildly successful, "spooktacular" community event—Family Halloween Fest. Designed as a safe alternative to late-night trick or treating, the gathering is planned for children and youth ages 3 - 10. Activities will include a children's haunted house, a costume parade, trick-or-treat stations, Halloween stories, musical entertainment with seasonal games, crafts, and MORE! There will be something for everyone—goblins, ghosts and mere mortals, alike.

Come to St. John Fisher College on Saturday, October 25. Parking will be available in Lot A/B with shuttle service drop-off at the doors of the Student Life Center. Festivities begin at 4:00 p.m. and will conclude at 7:00 p.m. Various Pittsford organizations and youth groups will be on hand to provide a fun and enjoyable Halloween experience for the whole family.

No admission will be charged. However we ask that you bring a canned good donation for the Pittsford Food Cupboard (one item per person). Don't forget your costume! A costume parade led by Roscoe the Fire Safety Dog will start at 6:00 p.m..

For more information about this event, please call the town's Director of Information at 248-6229. Updates are also available on our Web site at [www.townofpittsford.com](http://www.townofpittsford.com) (click on "Community").



**Town of Pittsford**  
11 South Main Street  
Pittsford, New York 14534

**Supervisor**  
William A. Carpenter

**Town Council**  
Sandra F. Zutes  
John J. Higgins  
Karen W. Green  
John Bernacki

BULK RATE  
U.S. POSTAGE  
**PAID**  
Pittsford, NY 14534  
Permit No. 33

