

THE PITTSFORD MESSENGER

TOWN OF PITTSFORD COMMUNITY REPORT

Volume 7 • Issue 5

Spring 2000

PITTSFORD SUPERVISOR'S SPRING 2000 REPORT

At the beginning of this year, the town received the good news that the New York State Attorney General's Office and the Department of Environmental Conservation had won a court victory in shutting down Monoco Oil Company for violation of state clean air, clean water and oil spill laws.

In reaching a decision on this matter, Monroe County Supreme Court Justice Evelyn Frazee found that "Monoco has consistently failed to properly operate and maintain the odor control system at the plant." Additionally, the judge found that Monoco has "had 14 years of failed attempts to address the situation. Their efforts in this period cannot be characterized as being in good faith."

We all have heard the news that the Pittsford Village Business Association will no longer sponsor Colonial Days. Feedback that the merchants have received is that residents would prefer shorter duration events spread throughout the year rather than weekend-long events. The association will be working with the town, village and other community groups to put together a calendar of events.

The Town Board and I are pleased that we can help make a difference in this matter through our commitment to sponsoring community events throughout the year. We have expanded our summer concert series this year by adding the traditional Friday night Pittsford Fireman's Band concert that began the Colonial Days.

We will also hold Pittsford Celebrates this year. The date will be Saturday, September 16 from 4 P.M. to 11 P.M. Please mark your calendar and join us on Main Street for a community street dance that the entire family can enjoy.

You may recall that we did not hold Pittsford Celebrates last year since we held our P2K celebration of the new millennium. This event was held in the St.

John Fisher Field house. More than 2500 persons from toddlers to grandparents were there to enjoy the good food, good music and good friends. We understand that this was the most successful event in Monroe County on New Year's Eve.

Our special thanks to Doug Emblidge and Ginny Ryan, Channel 13 anchors and co-hosts for the evening, who helped make the evening a real success. Thanks also to the entire P2K committee whose efforts and attention to detail were obvious. A real class way to begin the 21st Century.



Bill Carpenter

IN THIS ISSUE

<i>CELL TOWERS</i>	2
<i>SENIOR BALL</i>	4
<i>RABIES CLINIC</i>	5
<i>SUMMER CONCERTS</i>	6

LIVING WITH CELL TOWERS — HOW CAN WE MAKE IT EASIER?

The reason cell towers are such an important issue to Pittsford is simply put: Pittsford may have the largest per capita number of cell phone users in this region.

It is not a question of if we have to allow cell towers in our town. The federal government says we must. The question the town must address with every cell tower application is how to make the presence of cell towers in our community as unobtrusive as possible. It is not an issue that will go away—more and more people use and own cell phones. The prediction has been made that cell phones will someday replace home phones.

The town has zoning in place and a public hearing process that telecommunication companies with a license to operate in Pittsford must follow before they can locate a tower here. There are six vendors licensed by the federal government to operate in Pittsford. To date, we have approved 11 cell tower applications at six sites. Currently, there are five applications pending before the Planning Board.

To help us make the right decisions, the town is fortunate to have a knowledgeable consultant to assist the Planning Board with cell tower issues, William Johnson, associate professor and program chair of the RIT Telecommunications Engineering Technology Program. Here, he answers the questions that our residents most often ask.

The town has a cell tower zoning law, why didn't you exclude cell towers from residential areas?

W.J.—Cell towers are a utility not a commercial use. As part of their licensing agreement with the federal government,

telecommunication companies must agree to cover their service area. Pittsford is 90 per cent residential which makes it difficult, if not impossible, to locate cell towers solely in commercial or industrial areas.

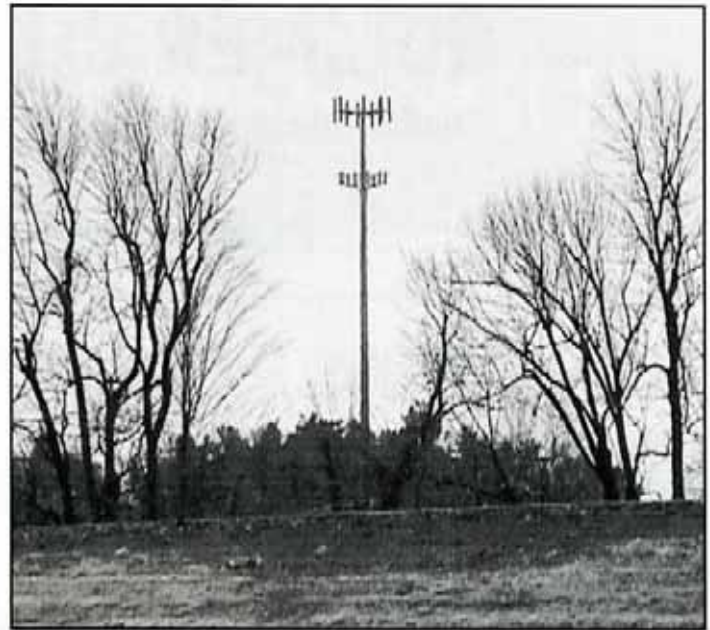
Telecommunication companies differ from other utilities in two important ways. They cannot condemn land to build their towers and they must work within the community's zoning laws. Both of these exceptions work to our advantage. Because our community is primarily residential, we may not have the ability to keep the cell towers out of residential areas. However, there are some things we can do to make them less intrusive.

Why are so many cell towers being requested?

W.J.—The federal government has licensed six companies to provide cellular phone service in this area. Three of the companies are obligated to cover 90 per cent of the population in this service area. Each cell tower erected at a height of 100-150 feet covers a "grid" of approximately seven square miles. Pittsford covers 24 square miles which means each cell company could need as many as three cell towers to adequately cover the entire town. To keep the number of cell towers under control, the Planning Board encourages, and sometimes requires, that competing providers co-locate on a single cell tower.



Can you find the cell tower "tree" in this view of the Knickerbocker Farm cell tower site? Two providers are co-located here. This is an example of how the Planning Board has blended a tower into a residential setting.



This cell tower on South Wilmarth Rd. near the thruway is a co-location for four providers. The tower is in a residential area but there are few houses close by.

What can the town do to make cell towers "fit in" in residential areas?

W.J.—There are ways we can make cell towers less intrusive:

We can locate cell towers so that they are not near residences; site them near highway interchanges adjacent to the thruway, or place them in tall structures such as steeples, buildings, and high tension utility polls.

In some instances, we can disguise cell towers as trees or silos, or blend them into the landscape. An example is the cell tower disguised as a tree on the Knickerbocker farm as seen - or not seen - in the photograph above. This tower, which accommodates two providers, is so well camouflaged that a technician assigned to work on the pole had trouble finding it! Since most trees don't grow over 75 feet tall in this area, there are limits to cell towers-as-trees.

We can co-locate services from different providers on a single monopole. The South Wilmarth Rd. tower, adjacent to the thruway, accommodates four users. This pole is in a

residential area but there are few residences nearby.

"The Pittsford Planning Board has been one of the most pro-active leaders in seeking ways to minimize the impact of cell towers on our community. The board has developed a strategy which allows a minimum number of monopoles at 100 - 150 feet, supported by other lower structures which blend into our natural environment." —**Bill Carpenter**

There are six companies licensed to operate in Pittsford. How can the town keep track of what they're doing?

W.J.—The town ordinance requires that the telecommunication companies include a 24-month build-out plan for their Pittsford service area every year. We also require a performance bond on file in the town to assure that there is money available to dismantle any obsolete tower and to restore the site appropriately.



Current Events

News from the Town of Pittsford



note

Town Web Site

The town's new web site will be turned on in May. Look for information from all town departments, news about the Town Board and volunteer boards, Town Board minutes, legal notices and special activity information. The web site address will be:
www.townofpittsford.com

Seniors Dance!

Pittsford Seniors are having a ball—a “Senior Citizens Ball,” of course! The ball, sponsored by the Varsity Clubs at Sutherland and Mendon High Schools, will be held on Saturday, May 13 from 7:30 P.M. to 10 P.M. at Mendon High School for the nostalgic price of \$4 a person. That price includes entertainment by high school students and the Gateswingers Orchestra, refreshments, corsages and boutonnieres. Dress as formal as you want to be. Come single, as a couple or bring a friend. If you don't drive at night, we'll arrange transportation. Call the Pittsford Senior Citizens Office for information, 248-6235 —**Jan Prinzi,**
Senior Citizens Director

NEW MOVIES

Enjoy the superior picture and sound quality of a digital videodisk (DVD) by checking out a movie from the library's new collection. We have Disney and classic movie titles along with recent releases. We will be adding to the collection regularly. DVDs may be borrowed for a week. For information about specific titles, call 248-6275—*Marjorie Shelly, Librarian*

MEMORIAL DAY PARADE

Pittsford's traditional Memorial Day Parade is scheduled for Monday, May 29 starting at 10 A.M. The parade and the ceremony that follows at the Soldier's Plot in the Pittsford Cemetery are being organized and supported by the Town of Pittsford and the American Legion, Rayson-Miller Post 899.

The parade will be led by the U.S. Marine Corps Reserve H&S Company 8th Battalion color guard. The cemetery observance will honor S/Sgt. Laverne "Dutch" Hayton, Pittsford's first Korean War casualty 50 years ago. Hayton was posthumously highly decorated with three major medals. His family will be present for the ceremony.

Following the parade and ceremony, an open house with refreshments will be held at the American Legion Post home at the Village Hall, 21 North Main St.

Any groups interested in marching in the parade may contact me at the Recreation Department, 248-6280—*Rebecca Brill, Recreation Department*

CURRENT EVENTS

Spring clean up

The town's curbside pickup program for yard debris started on April 3. You will still have a regularly scheduled day for pick up of containerized and bundled grass, weeds, leaves and cuttings as well as for loose branch and brush removal. You should have received our annual yard debris brochure that lists the pickup day for your neighborhood as well as instructions for leaving yard debris at the curb. If you didn't receive your brochure, call 248-6250. If you need additional information, call the Highway Garage, 248-6270—*Tom Elliott, Commissioner of Public Works*

FREE RABIES CLINIC

The annual free rabies clinic for residents' cats and dogs will be held on Thursday, May 4 from 4:30 P.M. to 7:30 P.M. at the Highway Garage, 60 Golf Ave. The clinic is sponsored in cooperation with the Monroe County Department of Health and the Mendon Village Animal Hospital.

Pets must be at least three months old to be vaccinated. Cats should be confined in sturdy carriers. Dogs must be leashed.

Three-year rabies shots can be given if there is proof of a previous rabies vaccination, otherwise a one-year shot will be given—*Greg Wegman, Animal Control Officer, 248-6240*

SUMMER CONCERT SERIES

Friday evenings throughout the summer from 6:45 P.M. to 8:15 P.M.

PORT OF PITTSFORD PARK

- JUNE 9** Pittsford Fireman's Band—pop favorites
- JUNE 23** Nostalgic Reunion—jazz*
- JULY 7** R & the Gang—classic rock, '50s to '90s*
- JULY 21** Pangaia—steel drum band
- AUGUST 4** The Music Makers—swing
- AUGUST 18** Pittsford Fireman's Band—pop favorites

**Rain date the following Friday*

Concert sponsors: Village Coal Tower Restaurant, Salomon Smith Barney, Montana Mills Bread Company, Canandaigua National Bank and Trust



Town of Pittsford
11 South Main Street
Pittsford, New York 14534

Supervisor

William A. Carpenter

Town Council

Sandra F. Zutes
Henry F. Marini
John J. Higgins
Karen W. Green



BULK RATE
U.S. POSTAGE
PAID
Pittsford, N.Y. 14534
Permit No. 33

Inside: Living with Cell Towers