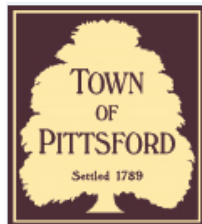


SUPERVISOR
William A. Smith, Jr.



COUNCIL MEMBERS
Kim Taylor, Deputy Supervisor
Naveen Havannavar
Cathy Koshykar
Stephanie Townsend

Town Board Agenda
Town Hall – 11 S. Main Street, Pittsford – Lower Level
Thursday, January 16, 2024 – 6:00 PM

Call to Order

Pledge of Allegiance

Minutes

Approval of Minutes of the Meeting of January 4, 2024

Legal Matters

Public Comment

Local Laws Nos. 1 and 2 of 2024: Increasing Real Property Tax Exemptions for
Seniors and Disabled Residents

Create Bridleridge Farms Park District

Create Bridleridge Farms 1-2 Pole Lighting District

Operational Matters

Public Comment

Reschedule Tuesday, February 20th Town Board meeting to Thursday, February 22nd

Financial Matters

Public Comment

Vouchers

Personnel Matters

Public Comment

Hiring Resolution

Other Business

Public Comment

Executive Session – Volunteer Board Appointments

Adjournment

PUBLIC MEETINGS OF THE TOWN BOARD are IN-PERSON at TOWN HALL

ATTENDING IN PERSON

Comments:

As always, comments are open to Pittsford residents, owners of property in the Town who pay Town taxes, owners of businesses in the Town, attorneys or agents designated by a resident to speak on the resident's behalf. To comment you must sign in at the sign-in desk.

VIEWING FROM HOME

1. Live

The Town Board meeting will stream live through our cable access station's streaming portal. Please use the following link:

<https://videoplayer.telvue.com/player/FcqTL0OYMCGU6WlccUApyUL3twz4dm9V/stream/819?fullscreen=false&showtabssearch=true&autostart=true>

You can watch on any computer, tablet, smart phone or web capable TV. If you log in before the meeting starts and see an error message, refresh your screen at 6:00 pm when the board meeting starts and you can view the meeting live while it is happening.

Comments:

Comments are open to Pittsford residents, owners of property in the Town who pay Town taxes, owners of businesses in the Town, attorneys or agents designated by a resident to speak on the resident's behalf.

- at any time before 2:30pm on the day of the meeting (a) by email to comments@townofpittsford.org; (b) by submitting it in writing, through the drop slot to the right of the front door at Town Hall (11 South Main Street); or (c) by U.S. Mail to the Town Clerk, for receipt no later than 2:30 pm on the day of the meeting;
and, in addition,
- at any time ***during*** the meeting by email to comments@townofpittsford.org
- All comments submitted should **include the name and street address** of the commenter. Comments from residents will be read by the Town Clerk at the appropriate point of the meeting. The Clerk will read your name, but not your street address unless you ask for it to be read.

2. On-Demand Video

As always, video will be uploaded to our cable access station's streaming portal subsequent to the meeting, usually within a few days. It is available on demand. You can see it here:

<https://videoplayer.telvue.com/player/FcqTL0OYMCGU6WlccUApyUL3twz4dm9V/stream/690?fullscreen=false&showtabssearch=true&autostart=true>

Minutes of the Pittsford Town Board for January 4, 2024

**DRAFT
TOWN OF PITTSFORD
TOWN BOARD
January 4, 2024**

Proceedings of a meeting of the Pittsford Town Board held on Thursday, January 4 at 5:45 P.M. local time in the Lower-Level Meeting Room of Town Hall, 11 South Main Street, in person.

PRESENT: Supervisor William A. Smith, Jr.; Councilmembers Naveen Havannavar, Cathy Koshykar, Stephanie Townsend, and Kim Taylor.

ABSENT: None.

ALSO PRESENT: Staff Members: Robert Koegel, Town Attorney; Paul Schenkel, Commissioner of Public Works; Renee McQuillen, Town Clerk; Jessie Hollenbeck, Recreation Director; Kelly Eldred, Assistant to the Supervisor; Holly Jennings, Communications Assistant; Spencer Bernard, Chief of Staff.

ATTENDANCE: Ninety-three members of the public along with an interpreter attended.

Supervisor Smith called the Town Board meeting to order at 5:45 P.M. and invited all to join in the Pledge to Flag.

SUPERVISORS ANNOUCEMENTS

Supervisor Smith welcomed elected officials and other dignitaries.

OATHS OF OFFICE

Pittsford Town Justice Michael Ansaldi administered the oaths of office to newly elected Councilmember Naveen Havannavar and to re-elected Councilmember Cathy Koshykar. Justice Ansaldi left for an appointment. State Supreme Court Justice William K. Taylor administered the oath of office to re-elected Town Supervisor William A. Smith, Jr.

The Supervisor declared a brief recess.

The Board reconvened following the recess.

MINUTES OF THE DECEMBER 19 AND DECEMBER 28 MEETINGS APPROVED

A Resolution to approve the minutes of the Town Board meetings of December 19, 2023, and December 28, 2023, was offered by Deputy Supervisor Taylor, seconded by Councilmember Townsend, and voted on by members as follows: Ayes: Koshykar, Taylor, Townsend, and Smith. Nays: none. Abstained: Havannavar.

The Resolution was declared carried as follows:

RESOLVED, that the Minutes of the December 19, 2023, and December 28, 2023, Town Board meetings are approved.

APPOINTMENTS BY SUPERVISOR FOR 2024-2025

Supervisor Smith announced the following Appointments for 2024-2025:

Minutes of the Pittsford Town Board for January 4, 2024

Deputy Supervisor

Kim Taylor

Staff

Director of Finance & Budget Director
Assistant to Supervisor
Town Historian

Brian Luke
Kelly Eldred
Vicki Profitt

Liaisons to Volunteer Boards

Naveen Havannavar

- Zoning Board of Appeals
- Parks and Recreation Advisory Board

Cathy Koshykar

- Pittsford Youth Services
- Design Review & Historic Preservation Board

Kim Taylor

- Planning Board
- Library Board of Trustees

Stephanie Townsend

- Environmental Board
- Assessment Review Board

Bill Smith

- Leadership
- Chamber of Commerce

APPOINTMENTS BY RESOLUTION FOR 2024-2025

PUBLIC COMMENT

Michael Slade commented.

Supervisor Smith proposed staff appointments for approval by the Town Board, moving to appoint the individuals named below for the biennial period 2024 - 2025, Deputy Supervisor Taylor seconded the motion, and the Resolution was voted on by members as follows: Ayes: Havannavar, Koshykar, Taylor, Townsend, and Smith. Nays: none.

The Resolution was declared carried as follows:

RESOLVED, that each of the following be and hereby is appointed to the office set forth opposite his or her name for the biennial period covering calendar years 2024 and 2025:

Renee McQuillen
Robert Koegel

Town Clerk and Receiver of Taxes
Town Attorney

Paul Schenkel

Commissioner of Public Works, Highway Superintendent,
Superintendent of Sewers, Parks Superintendent

Jessie Hollenbeck
Laura Beeley
Jessica Tantalo
Karen Ward

Director of Recreation
Deputy Town Clerk
Deputy Town Clerk
Deputy Receiver of Taxes

Minutes of the Pittsford Town Board for January 4, 2024

James Gagnier
William A. Smith

Deputy Commissioner of Public Works
Marriage Officiant

DESIGNATION OF OFFICIAL NEWSPAPER FOR 2024

Deputy Supervisor Taylor motioned to approve The Daily Record as the official newspaper for publication of legal notices by the Town with an alternate of the Rochester Business Journal, the motion was seconded by Councilmember Townsend, and was voted on by members as follows: Ayes: Havannavar, Koshykar, Taylor, Townsend, and Smith. Nays: none.

The Resolution was declared carried as follows:

RESOLVED, that The Daily Record be and hereby is designated as the official Town newspaper for 2024 with the alternate to be the Rochester Business Journal.

FINANCE MATTERS

PUBLIC COMMENTS

No comments were submitted.

FINANCIAL AUTHORIZATIONS FOR 2024

2024 PETTY CASH FUNDS APPROVED

A Resolution to approve 2024 Petty Cash Funds was offered by Councilmember Havannavar, seconded by Supervisor Smith, and voted on by the members as follows: Ayes: Havannavar, Koshykar, Taylor, Townsend and Smith. Nays: none.

The Resolution was declared carried as follows:

RESOLVED, that the following petty cash funds, and the custodians for those funds, are approved for 2024 as per adopted Town policy:

<u>Account</u>	<u>Amount</u>	<u>Custodian</u>
Library	\$500.00	Library Director
Recreation Department	\$230.00	Recreation Director
Senior Citizens	\$ 90.00	Recreation Supervisor – Senior Services
Sewer Districts	\$150.00	Sewer District General Foreman
Town Clerk	\$650.00	Town Clerk
Town Justice	\$150.00	Court Clerk
Public Works	\$100.00	Commissioner of Public Works

VOUCHER APPROVAL AUTHORIZED FOR 2024

A motion to authorize certain staff members to approve vouchers was offered by Councilmember Townsend, seconded by Deputy Supervisor Taylor, and voted on by the members as follows: Ayes: Havannavar, Koshykar, Taylor, Townsend and Smith. Nays: none.

The Resolution was declared carried as follows:

RESOLVED, that the following persons are authorized to approve Town vouchers during 2024: Town Supervisor, Deputy Supervisor, Town Clerk, Director of Finance, Personnel Director, Assessor, Commissioner of Public Works, Library Director, Secretary to Commissioner of Public Works, Historian, Court Clerk, Recreation Director, Recreation Account Clerk, Deputy Commissioner of Public Works, Technology Manager, Recreation Supervisor-Senior Services, Communications Director, and Town Attorney.

Minutes of the Pittsford Town Board for January 4, 2024

2024 PAY PERIOD SET

A Resolution to set the 2024 Pay Period was offered by Supervisor Smith, seconded by Deputy Supervisor Taylor, and voted on by the members as follows: Ayes: Havannavar, Koshykar, Taylor, Townsend, and Smith. Nays: none.

The Resolution was declared carried as follows:

RESOLVED that the 2024 pay period for the Town of Pittsford is bi-weekly.

2024 WORK WEEK ESTABLISHED

A Resolution to establish the 2024 Work Week was offered by Supervisor Smith, seconded by Deputy Supervisor Taylor, and voted on by the members as follows: Ayes: Havannavar, Koshykar, Taylor, Townsend, and Smith. Nays: none.

The Resolution was declared carried as follows:

RESOLVED, that the 2024 Town of Pittsford work week will be 40 hours for the Highway Department, Sewer Department, Building Maintenance, Animal Control and Parks Laborers and 35 hours for all other departments.

2024 MILEAGE REIMBURSEMENT RATE SET

A Resolution to set the 2024 Mileage Reimbursement Rate was offered by Supervisor Smith, seconded by Councilmember Townsend, and voted on by the members as follows: Ayes: Havannavar, Koshykar, Taylor, Townsend, and Smith. Nays: none.

The Resolution was declared carried as follows:

RESOLVED, that effective January 1, 2024, the mileage reimbursement rate will be the IRS rate for 2024 (\$0.67 per mile.)

2024 HEALTH INSURANCE REIMBURSEMENT RATE

A Resolution to set the 2024 Health Insurance Reimbursement Rate was offered by Supervisor Smith, seconded by Councilmember Townsend, and voted on by the members as follows: Ayes: Havannavar, Koshykar, Taylor, Townsend, and Smith. Nays: none.

The Resolution was declared carried as follows:

RESOLVED, that the 2024 Health Insurance Reimbursement Rate will be a maximum of \$4,000.00 per Section 5.4 of the Personnel Rules.

2024 MEETING REIMBURSEMENT RATE SET

A Resolution to set the 2024 Meeting Reimbursement Rate was offered by Councilmember Townsend, seconded by Deputy Supervisor Taylor, and voted on by the members as follows: Ayes: Havannavar, Koshykar, Taylor, Townsend, and Smith. Nays: none.

The Resolution was declared carried as follows:

RESOLVED, that staff members attending Association meetings will be reimbursed up to \$20.00 per meeting for lunch expenses.

2024 PER DIEM MEAL REIMBURSEMENT SET

A Resolution to set the 2024 Per Diem Meal Reimbursement Rate was offered by Supervisor Smith, seconded by Councilmember Townsend, and voted on by the members as follows: Ayes: Havannavar, Koshykar, Taylor, Townsend, and Smith. Nays: none.

The Resolution was declared carried as follows:

RESOLVED, that 2024 per diem rate for meals and incidental expenses will be the higher of \$50.00 per day, or the applicable Federal per diem rate.

Minutes of the Pittsford Town Board for January 4, 2024

2024 BANK DEPOSITORIES APPROVED

A Resolution to approve 2024 Bank Depositories was offered by Supervisor Smith, seconded by Deputy Supervisor Taylor, and voted on by the members as follows: Ayes: Havannavar, Koshykar, Taylor, Townsend, and Smith. Nays: none.

The Resolution was declared carried as follows:

RESOLVED, that the following banks are approved as depositories for Town funds in 2024, J.P. Morgan Chase, M&T, Canandaigua National Bank & Trust, and NY Class Local Government Investment Pool.

PERSONAL MATTERS

PUBLIC COMMENTS

No comments were submitted.

APPROVAL OF CONFERENCE ATTENDANCE FOR 2024

Councilmember Townsend moved to authorize staff attendance at regular meetings of their professional organizations, the motion was seconded by Deputy Supervisor Taylor, and was voted on by members as follows: Ayes: Havannavar, Koshykar, Taylor, Townsend, and Smith. Nays: none.

RESOLVED, that the following personnel be and hereby are authorized to attend the regular meetings of their professional organizations, as stated below, during 2024:

Conference Attendance Authorized - the following personnel are authorized to attend the regular meetings of their professional organizations:

Renee McQuillen, Town Clerk & Receiver of Taxes
Monroe County Town Clerks, Tax Receivers & Collectors Association
New York State Town Clerks Association
New York State Association of Tax Receivers & Collectors

Karen Ward, Deputy Receiver of Taxes
New York State Tax Receivers and Collectors Association
Monroe County Town Clerks, Tax Receivers & Collectors Association

Laura Beeley, Deputy Town Clerk
Monroe County Town Clerks, Tax Receivers & Collectors Association

Paul Schenkel, Commissioner of Public Works
American Public Works Association – State and Local Branch
Monroe County Highway Superintendents Association
GIS/SIG Regional Committee
Monroe County Stormwater Coalition
PERMA – Safety Council for Western Region

James Gagnier, Deputy Commissioner of Public Works
Monroe County Highway Superintendents Association
Monroe County Stormwater Coalition (MCSC)

Michelle Debyah, Geographic Information System Operator
GIS/SIG Regional Committee
NYS GIS Association

Minutes of the Pittsford Town Board for January 4, 2024

April Zurowski, Planning & Zoning Administrator
Monroe County Stormwater Coalition

Rob Fromberger, Town Engineer
National Society of Professional Engineers – Monroe Chapter
American Society of Civil Engineers
American Public Works Association

Matt Rickett, Highway Foreman
Monroe County Highway Superintendents Association

Bill Zink, Building Inspector/Anthony Caruso, Building Inspector
Finger Lakes Building Officials Assoc. (FLBOA) or
Niagara Frontier Building Officials
Monroe County Fire Marshal Association

Salvatore Tantalò, Fire Marshal
Monroe County Fire Marshal Association
Finger Lakes Building Officials Association (FLBOA)

Town Supervisor, Town Attorney, one Board Member
New York State Association of Towns

Stephen Robson, Assessor/Hayes Wallman
Monroe County Assessors' Association
NYS Department of Tax & Finance – Office of Real Property Services
NYS Assessors Association

Brian Luke, Finance Officer
Monroe County Town Finance Officers Association
Government Finance Officers Association – State and Local
FLMHIT Meetings

Cheryl Fleming, Personnel Director
Monroe County Town Finance Officers Association
FLMHIT Meetings
Monroe County HR Meetings
PERMA Annual Conference – Spring/Fall Seminars
SHRM Conference

Shelley O'Brien, Communications Director
Causewave Community Partners (formerly Ad Council of Rochester)
Public Relations Society of America
Association for Women in Communications
National Association of Government Communicators

Jessie Hollenbeck, Director of Recreation
Genesee Valley Recreation and Parks Society
New York State Recreation and Parks Society

Alison Burchett, Assistant Director, Recreation
Genesee Valley Recreation and Parks Society
New York State Recreation and Parks Society

Minutes of the Pittsford Town Board for January 4, 2024

Katelyn Disbrow, Recreation Supervisor
Genesee Valley Recreation and Parks Society
New York State Recreation and Parks Society
FLMHIT Wellness Committee

Kathleen Laskey, Recreation Supervisor
Genesee Valley Recreation and Parks Society
New York State Recreation and Parks Society

Casandra Schrom, Recreation Leader
Genesee Valley Recreation and Parks Society
New York State Recreation and Parks Society

Amanda Poulin, Recreation Leader
Genesee Valley Recreation and Parks Society
New York State Recreation and Parks Society

Jennifer Morrow, Director of Senior Center
Genesee Valley Recreation and Parks Society
New York State Recreation and Parks Society

ASSOCIATION OF TOWNS DELEGATES DESIGNATED

A Resolution to designate Supervisor Smith as the delegate and Councilmember Townsend as the alternate delegate to represent the Town of Pittsford at the Association of Towns Annual Business Meeting was offered by Supervisor Smith, seconded by Deputy Supervisor Taylor, and was voted on by members as follows: Ayes: Havannavar, Koshykar, Taylor, Townsend, and Smith. Nays: none.

The motion was declared carried as follows:

RESOLVED, that Supervisor Smith be designated as the delegate to represent and vote on behalf of the Town of Pittsford at the Annual Business Meeting of the Association of Towns on February 20, 2024, and that Town Board Member Stephanie Townsend be designated as the alternate delegate for the Town of Pittsford.

OTHER BUSINESS

Supervisor Smith reminded everyone that resumes for Volunteer Board positions should be sent to his assistant, Kelly Eldred, by next Friday, January 12, 2024.

Councilmember Townsend inquired if staff would be prepared to discuss legislation for an increase in the income threshold for senior and disabled tax exemptions. Supervisor Smith and Town Attorney Koegel both indicated they would have something prepared to share with the board at the next meeting.

Councilmember Townsend also commented on the status of the Zoning Code Update. Supervisor Smith stated he had been in touch with the project consultants, and they will be meeting with Town staff next week to finalize the next phase. He also noted that he made it clear to them that the Town needs complete this project up, using a fixed schedule.

Councilmember Townsend also announced a volunteer fair that she has organized for Saturday, January 20th from 11:00 AM to 1:00 PM in the Fisher Room at the Town Library. This will be an opportunity for residents to meet with and gather information about Pittsford public service organizations seeking volunteer help.

Minutes of the Pittsford Town Board for January 4, 2024

PUBLIC COMMENT

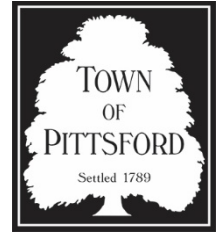
No comments were made.

With no further business, the meeting adjourned at 6:32 P.M.

Respectfully submitted,

Renee McQuillen
Town Clerk

MEMORANDUM



To: Town Board Members

From: Robert B. Koegel

Date: January 11, 2024

Regarding: Local Laws Nos. 1 and 2 of 2024:
Increasing Real Property Tax Exemptions for Seniors and Disabled Residents

For Meeting On: January 16, 2024

From time to time, the State Legislature amends the Real Property Tax Law which enables municipalities to grant partial real property tax exemptions for senior citizens and disabled residents with limited income. Recent state law revisions authorize municipalities to increase the income levels which would qualify seniors and disabled residents to a graduated level of assessment exemption and identifies different types of income which municipalities may or may not count for qualifying income.

The recent changes to State law revised the graduated scale that applies to the exemption. The maximum exemption is 50% of the assessed value of the property subject to tax. To be eligible for the full exemption, the applicant's income must be lower than \$50,000. As income rises, a sliding scale applies, to the point that at \$58,400 of income, no exemption applies. The proposed local laws submitted herewith fully follow the State scale, providing the maximum permissible benefit to the applicant. This effectively doubles the benefit of the current exemption in Pittsford that was adopted under the old State law.

For purposes of this exemption, the revised State law defines "income" to mean "adjusted gross income" for federal income tax purposes. It specifies certain other types of income or expenses which municipalities may or may not use to adjust income figures. For example, State law requires tax exempt interest and dividends to be included as income. It places a limit of \$15,000 on the aggregate amount of all losses that can be deducted from income for purposes of federal tax. The proposed local laws incorporate these requirements.

In addition, the revised State law allows municipalities, optionally in the municipality's discretion, to make certain adjustments to income. The municipality may include or exclude from income distributions from taxable individual retirement accounts (IRAs). It may include or exclude non-taxed social security benefits. The calculation of income determines eligibility for the exemption. The proposed local laws **include** as income non-taxed Social Security benefits and **exclude** from income IRA distributions. The proposed local laws **include** as income unreimbursed medical and prescription drug expenses, as past experience has shown these to be unverifiable.

The following outline illustrates how the income calculation in the proposed local laws would work:

1. Begin with the applicant's adjusted gross income as reported on a federal or state income tax return;
2. **add** any social security benefits that are not taxable;

3. **add** any tax-exempt interest or dividends excluded from federal adjusted gross income;
4. **add** losses reported on the federal return, up to \$15,000;
5. **deduct** any IRA distributions that were included in the applicant's federal adjusted gross income.

The result is the figure for income that the Town will use to determine eligibility for the exemption and its application.

If the result is **less than \$50,000**, the applicant is **eligible** for the full 50% exemption.

If the result is **\$58,400 or greater**, the applicant is **not eligible** for the exemption.

If the result falls **between \$50,000 and \$58,400**, the applicant is entitled to an exemption percentage in accordance with the sliding scale set forth in the State law

If the Board wishes to move forward with the proposed local laws to increase the Town's real property tax exemption for senior and disabled residents, the following resolution would be in order:

RESOLVED, that public hearings be and hereby are set for February 6, 2024 at 6:00 PM local time at the Pittsford Town Hall to consider enactment of proposed Local Laws Nos. 1 & 2.

At a Regular Meeting of the Town Board of the Town of Pittsford, New York held at the Town Hall, 11 South Main Street, Pittsford, New York, on the 16th day of January, 2024.

PRESENT: William A. Smith, Jr., Supervisor
Kim Taylor, Deputy Supervisor
Naveen Havannavar, Councilmember
Cathleen A. Koshykar, Councilmember
Stephanie M. Townsend, Councilmember

ABSENT: None

In the Matter

of

THE ADOPTION OF PROPOSED LOCAL LAW
NO. 1 of 2024: AMENDING ARTICLE I OF
CHAPTER 133 OF THE TOWN OF PITTSFORD
MUNICIPAL CODE ENTITLED PARTIAL REAL
ESTATE TAX EXEMPTION

Resolution to Set Public Hearing

WHEREAS, true and correct copies of proposed Local Law No. 1 of 2024: Amending Article I of Chapter 133 Of The Town Of Pittsford Municipal Code, entitled Partial Real Estate Tax Exemption, were delivered to each member of the Town Board; and

WHEREAS, due consideration has been given to the adoption of said proposed Local Law No. 1 of 2024, by all members of the Town Board who were present; and

WHEREAS, it was the considered opinion of all members of the Town Board who were present that a public hearing should be held on the 6th day of February, 2024, at 6:00 p.m. at the Town Hall, 11 South Main Street, Pittsford, New York, to consider the adoption of said proposed Local Law No. 1 of 2024;

NOW, on motion duly made and seconded, it was

RESOLVED, that a public hearing be held on the 6th day of February, 2024, at 6:00 P.M., Local Time, at the Town Hall, 11 South Main Street, Pittsford, New York, on the

question of the adoption of said proposed Local Law No. 1 of 2024; and be it further

RESOLVED, that a Notice of Hearing and a copy of said proposed Local Law 1 of 2024, or a summary thereof, be published in a newspaper previously designated as an official newspaper for publication of public notices, not less than five (5) days prior to said hearing; and be it further

RESOLVED, that the Town Clerk shall post certified copies of both this resolution and said proposed Local Law No. 1 of 2024, or a summary thereof, on the bulletin board, maintained by the Town Clerk pursuant to § 40(6) of the Town Law, for a period of not less than five (5) days prior to said public hearing.

Said matter having been put to a vote, the following votes were recorded:

William A. Smith, Jr.	VOTING
Kim Taylor	VOTING
Naveen Havannavar	VOTING
Cathleen A. Koshykar	VOTING
Stephanie M. Townsend	VOTING

The resolution was thereupon declared duly adopted.

DATED: January 16, 2024

Renee M. McQuillen, Town Clerk

I, RENEE M. McQUILLEN, Town Clerk of the Town of Pittsford, New York, DO HEREBY CERTIFY that I have compared a copy of the resolution as herein specified with the original in the minutes of the meeting of the Town Board of the Town of Pittsford and that the same is a correct transcript thereof and the whole of the said original.

IN WITNESS WHEREOF, I have hereunto set my hand this ___ day of January, 2024.

Renee M. McQuillen, Town Clerk

**BE IT ENACTED BY THE
TOWN BOARD OF THE
TOWN OF PITTSFORD
NEW YORK**

AS FOLLOWS:

**LOCAL LAW NO. 1 OF 2024:
THE ADOPTION OF PROPOSED LOCAL LAW
NO. 1 of 2024: AMENDING ARTICLE I OF CHAPTER 133
OF THE TOWN OF PITTSFORD MUNICIPAL CODE
ENTITLED TAXATION – PARTIAL
REAL PROPERTY TAX EXEMPTION**

Sec. 1 Title

This Local Law shall be known as “Local Law No. 1 of 2024: Amending Article I of Chapter 133 Of The Town Of Pittsford Municipal Code Entitled Taxation – Partial Real Property Tax Exemption.”

Sec. 2 Amendment to Existing Law

The Pittsford Town Code, Chapter 133, Article I, shall be amended to revise § 133-2 “Definitions” and §133-3 “Exemptions granted,” so as to redefine qualifying income and to increase the income levels of exemptions, both consistent with recent state law revisions, as follows:

§ 133-2. Definitions.

This article is adopted pursuant to the authority of New York State Real Property Law § 467. All definitions, terms and conditions of such statute shall apply to this article. Additionally, as used in this article, the following terms shall have the meanings indicated:

INCOME OF OWNER OR OWNERS

The income of the owner or the combined income of the owners of the property for the second-latest calendar year immediately preceding the date of making application for the partial tax exemption shall be determinative of eligibility. Where title is vested in either the husband or wife, their combined income shall be determinative of eligibility. The term "income" as used herein shall mean the "adjusted gross income" for federal income tax purposes as reported on the applicant's federal or state income tax return for the applicable income tax year, subject to any subsequent amendments or revisions, plus any social security benefits not included in such federal adjusted gross income and any tax-exempt interest or dividends that were excluded from the applicant's federal adjusted gross income. Income shall not mean distributions received from an individual retirement account or individual retirement annuity that were included in the applicant's federal adjusted gross income, and any losses that were applied to reduce the applicant's federal adjusted gross income shall be subject to the following limitations: 1) the net amount of loss reported on federal Schedule C, D, E, or F shall not exceed \$3,000 per schedule; 2) the net amount of any other separate category of loss shall not exceed \$3,000; and 3) the aggregate amount of all losses shall not exceed \$15,000. The applicant's income shall not be offset by all medical and prescription drug expenses actually paid that were not reimbursed or paid by insurance.

§ 133-3. Exemptions granted.

Real property owned by one or more persons, each of whom is 65 years of age or older, or real property owned by husband and wife, one of whom is 65 years of age or older, shall be partially exempt from Town real property taxes in accordance with the following schedule:

<u>Annual Income</u>	<u>Percentage of Exemption</u>
Less than \$50,000	50%
\$50,000 to \$50,999.99	45%
\$51,000 to \$51,999.99	40%
\$52,000 to \$52,999.99	35%
\$53,000 to \$53,899.99	30%
\$53,900 to \$54,799.99	25%
\$54,800 to \$55,699.99	20%

\$55,700 to \$56,599.99	15%
\$56,600 to \$57,499.99	10%
\$57,500 to \$58,399.99	5%
\$58,400 or more	0%

Sec. 3 Severability

If any clause, sentence, phrase, paragraph or any part of this Local Law shall for any reason be adjudicated finally by a court of competent jurisdiction to be invalid, such judgment shall not affect, impair or invalidate the remainder of this Local law, but shall be confined in its operation and effect to the clause, sentence, phrase, paragraph or part thereof, directly involved in the controversy or action in which such judgment shall have been rendered. It is hereby declared to be the legislative intent that the remainder of this Local Law would have been adopted had any such provision been excluded.

Sec. 4 Effective Date

This Article shall apply to assessment rolls prepared on the basis of taxable status dates occurring on or after March 1, 2024.

At a Regular Meeting of the Town Board of the Town of Pittsford, New York held at the Town Hall, 11 South Main Street, Pittsford, New York, on the 16th day of January, 2024.

PRESENT: William A. Smith, Jr., Supervisor
Kim Taylor, Deputy Supervisor
Naveen Havannavar, Councilmember
Cathleen A. Koshykar, Councilmember
Stephanie M. Townsend, Councilmember

ABSENT: None

In the Matter

of

THE ADOPTION OF PROPOSED LOCAL LAW
NO. 2 of 2024: AMENDING ARTICLE VII OF
CHAPTER 133 OF THE TOWN OF PITTSFORD
MUNICIPAL CODE ENTITLED REAL PROPERTY
TAX EXEMPTION FOR DISABLED

Resolution to Set Public Hearing

WHEREAS, true and correct copies of proposed Local Law No. 2 of 2024: Amending Article VII of Chapter 133 Of The Town Of Pittsford Municipal Code, entitled Real Property Tax Exemption for Disabled, were delivered to each member of the Town Board; and

WHEREAS, due consideration has been given to the adoption of said proposed Local Law No. 2 of 2024, by all members of the Town Board who were present; and

WHEREAS, it was the considered opinion of all members of the Town Board who were present that a public hearing should be held on the 6th day of February, 2024, at 6:00 p.m. at the Town Hall, 11 South Main Street, Pittsford, New York, to consider the adoption of said proposed Local Law No. 2 of 2024;

NOW, on motion duly made and seconded, it was

RESOLVED, that a public hearing be held on the 6th day of February, 2024, at 6:00 P.M., Local Time, at the Town Hall, 11 South Main Street, Pittsford, New York, on the

question of the adoption of said proposed Local Law No. 2 of 2024; and be it further

RESOLVED, that a Notice of Hearing and a copy of said proposed Local Law 2 of 2024, or a summary thereof, be published in a newspaper previously designated as an official newspaper for publication of public notices, not less than five (5) days prior to said hearing; and be it further

RESOLVED, that the Town Clerk shall post certified copies of both this resolution and said proposed Local Law No. 2 of 2024, or a summary thereof, on the bulletin board, maintained by the Town Clerk pursuant to § 40(6) of the Town Law, for a period of not less than five (5) days prior to said public hearing.

Said matter having been put to a vote, the following votes were recorded:

William A. Smith, Jr.	VOTING
Kim Taylor	VOTING
Naveen Havannavar	VOTING
Cathleen A. Koshykar	VOTING
Stephanie M. Townsend	VOTING

The resolution was thereupon declared duly adopted.

DATED: January 16, 2024

Renee M. McQuillen, Town Clerk

I, RENEE M. McQUILLEN, Town Clerk of the Town of Pittsford, New York, DO HEREBY CERTIFY that I have compared a copy of the resolution as herein specified with the original in the minutes of the meeting of the Town Board of the Town of Pittsford and that the same is a correct transcript thereof and the whole of the said original.

IN WITNESS WHEREOF, I have hereunto set my hand this ___ day of January, 2024.

Renee M. McQuillen, Town Clerk

**BE IT ENACTED BY THE
TOWN BOARD OF THE
TOWN OF PITTSFORD
NEW YORK**

AS FOLLOWS:

**LOCAL LAW NO. 2 OF 2024:
THE ADOPTION OF PROPOSED LOCAL LAW
NO. 2 of 2024: AMENDING ARTICLE VII OF CHAPTER 133
OF THE TOWN OF PITTSFORD MUNICIPAL CODE
ENTITLED TAXATION – REAL PROPERTY TAX
EXEMPTION FOR DISABLED PERSONS**

Sec. 1 Title

This Local Law shall be known as “Local Law No. 2 of 2024: Amending Article VII of Chapter 133 Of The Town Of Pittsford Municipal Code Entitled Taxation – Real Property Tax Exemption for Disabled Persons”

Sec. 2 Amendment to Existing Law

The Pittsford Town Code, Chapter 133, Article VII, shall be amended to revise § 133-25 “Definitions” and §133-26 “Exemptions granted,” so as to redefine qualifying income and to increase the income levels of exemptions, both consistent with recent state law revisions, as follows:

§ 133-25 Definitions.

As used in this article, the following terms shall have the meanings indicated:

A PERSON WITH A DISABILITY

An individual who has a physical or mental impairment, not due to current use of alcohol or illegal drug use, which substantially limits such person’s ability to engage in one or more major life activities, such as caring for one’s self,

performing manual tasks, walking, seeing, hearing, speaking, breathing, learning and working, and who is certified to receive social security disability insurance (SSDI) or supplemental security income (SSI) benefits under the federal Social Security Act, or is certified to receive railroad retirement disability benefits under the federal Railroad Retirement Act, or has received a certificate from the State Commission for the Blind stating that such person is legally blind, or is certified to receive a United States Postal Service disability pension, or is certified to receive a United States Department of Veteran Affairs disability pension pursuant to 38 U.S.C. §1521.

INCOME OF OWNER OR OWNERS

The income of the owner or the combined income of the owners of the property for the second-latest calendar year immediately preceding the date of making application for the partial tax exemption shall be determinative of eligibility. Where title is vested in either the husband or wife, their combined income shall be determinative of eligibility. The term "income" as used herein shall mean the "adjusted gross income" for federal income tax purposes as reported on the applicant's federal or state income tax return for the applicable income tax year, subject to any subsequent amendments or revisions, plus any social security benefits not included in such federal adjusted gross income and any tax-exempt interest or dividends that were excluded from the applicant's federal adjusted gross income. Income shall not mean distributions received from an individual retirement account or individual retirement annuity that were included in the applicant's federal adjusted gross income, and any losses that were applied to reduce the applicant's federal adjusted gross income shall be subject to the following limitations: 1) the net amount of loss reported on federal Schedule C, D, E, or F shall not exceed \$3,000 per schedule; 2) the net amount of any other separate category of loss shall not exceed \$3,000; and 3) the aggregate amount of all losses shall not exceed \$15,000. The applicant's income shall not be offset by all medical and prescription drug expenses actually paid that were not reimbursed or paid by insurance.

SIBLING

A brother or a sister, whether related through half blood, whole blood, adoption.

§ 133-26. Exemptions granted.

Real property owned by one or more persons with disabilities, or real property owned by a husband, wife or both, or by siblings, at least one of whom has a disability, and whose income, as herein defined, is limited by reason of such disability, shall be partially exempt from Town real property taxes in accordance with the following schedule:

<u>Annual Income</u>	<u>Percentage of Exemption</u>
Less than \$50,000	50%
\$50,000 to \$50,999.99	45%
\$51,000 to \$51,999.99	40%
\$52,000 to \$52,999.99	35%
\$53,000 to \$53,899.99	30%
\$53,900 to \$54,799.99	25%
\$54,800 to \$55,699.99	20%
\$55,700 to \$56,599.99	15%
\$56,600 to \$57,499.99	10%
\$57,500 to \$58,399.99	5%
\$58,400 or more	0%

Sec. 3 Severability

If any clause, sentence, phrase, paragraph or any part of this Local Law shall for any reason be adjudicated finally by a court of competent jurisdiction to be invalid, such judgment shall not affect, impair or invalidate the remainder of this Local law, but shall be confined in its operation and effect to the clause, sentence, phrase, paragraph or part thereof, directly involved in the controversy or action in which such judgment shall have been rendered. It is hereby declared to be the legislative intent that the remainder of this Local Law would have been adopted had any such provision been excluded.

Sec. 4 Effective Date

This Article shall apply to assessment rolls prepared on the basis of taxable status dates occurring on or after March 1, 2024.

NOTICE OF PUBLIC HEARINGS

PLEASE TAKE NOTICE, that two public hearings will be held by the Town Board of the Town of Pittsford, New York, at the Town Hall, 11 South Main Street, Pittsford, New York, on the 6th day of February, 2024, at 6:00 o'clock P.M., Local Time, on the proposed adoption of Local Law Nos. 1 & 2 of 2024 that would amend the Town Code with respect to partial real estate tax exemptions available to qualified senior citizens and disabled citizens with limited incomes. The specific terms contained in proposed Local Laws No. 1 & 2 of 2024 are available for review in the Town Clerk's Office.

The aforesaid public hearing has been directed to be held pursuant to resolutions of the Town Board of the Town of Pittsford, New York, duly adopted at a meeting of said Board on the 16th day of January, 2024.

Dated: January 16, 2024

Renee M. McQuillen
Town Clerk
Town of Pittsford

MEMORANDUM

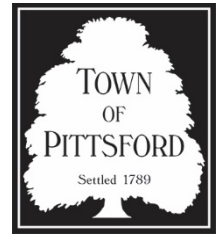
To: Town Board Members

From: Paul Schenkel

Date: January 12, 2024

Regarding: Bridleridge Farms Park District

For Meeting On: January 16, 2024



Ladies and Gentlemen:

The Department of Public Works has received a Petition, signed by the sole property owner, for the creation of a Park District, on the Bridleridge Farms Subdivision, on the west side of Clover Street, just south of the NYS Thruway. The Department is recommending that the Town Board set a public hearing to consider this matter.

Attached are the following:

- Proposed "Order for Hearing"
- The signed Petition for Park District, including
 - Exhibit A Metes & Bounds
 - Schedule A Map for the proposed Park District
 - Schedule B Map showing the proposed maintenance areas
 - Schedule C Map showing approved landscape plan
- Certificate of Maintenance Costs, signed
- Assessor's Certificate, signed

The proposed date for the public hearing is February 6, 2024, as is set forth in the proposed Order.

RESOLUTION FOR ORDER

I move that a Public Hearing be set for February 6, 2024, at 6:00 P.M., local time, a Town Hall, to consider the approval of the proposed "Bridleridge Farms Park District," as set forth in the written Order.

At a Regular Meeting of the Town Board of the Town of Pittsford, New York, held, at the Town Hall, in the Town of Pittsford, New York, on the 16th day of January 2024.

PRESENT:

William A. Smith, Jr., Supervisor
Kim Taylor, Deputy Supervisor
Naveen Havannavar, Councilperson
Cathleen A. Koshykar, Councilperson
Stephanie Townsend, Councilperson

ABSENT: NONE

TOWN BOARD
TOWN OF PITTSFORD

STATE OF NEW YORK
COUNTY OF MONROE

In the Matter of

THE ESTABLISHMENT OF THE
BRIDLERIDGE FARMS PARK DISTRICT
IN THE TOWN OF PITTSFORD,
MONROE COUNTY, NEW YORK

**ORDER FOR
PUBLIC HEARING**

WHEREAS, a Petition, signed by the sole owner of taxable real property situated in the proposed “Bridleridge Farms Park District,” has been presented to the Town Board of Pittsford, Monroe County, New York, for the proposed creation of the aforesaid Park District to be located in the Bridleridge Farms Subdivision, the said proposed District being located in general terms on the streets of Bridleridge Farms, Canterbrook Meadows, and Hollow Oak Trail, situated on the West side of Clover Street and South of I-490, including 118 parcels anticipated to be developed, all as is more particularly set forth in the Petition and maps as described herein; and

WHEREAS, no public monies are to be expended for the construction or acquisition of said District; and

WHEREAS, it is proposed that all improvements in the District be maintained by the Town during the existence of the said District and that the annual amount for maintenance thereof, estimated to be in the amount of \$84.75, for a typical homeowner in the first year of the Town’s maintenance, shall be assessed upon the tax rolls of the owners of real property within the said District annually and to be paid by the said owners of real property within the said District annually on an ad valorem basis;

NOW, ON MOTION duly made and seconded, it is

RESOLVED AND ORDERED, that a public hearing be held before the Town Board of the Town of Pittsford, at the Town of Pittsford Town Hall, on the 6th day of February 2024, at 6:00 o’clock P.M., Local Time, to consider the said Petition and to

hear all persons interested therein, and for such other and further action on the part of the Town Board with relation to the said Petition as may be required by law or proper in the premises; and it is further

RESOLVED AND ORDERED, that a copy of the within Order be duly published in The Daily Record, which paper is designated as the official paper for such publication, and a copy of the said Order be posted on the bulletin board of the Town Clerk of the Town of Pittsford, New York, maintained pursuant to Section 30 of the Town Law, not less than ten (10) nor more than twenty (20) days prior to the date of the said hearing.

Said matter having been put to a vote, the following votes were recorded:

William A. Smith, Jr.	VOTING
Kim Taylor	VOTING
Naveen Havannavar	VOTING
Cathleen A. Koshykar	VOTING
Stephanie Townsend	VOTING

The Order was thereupon declared duly adopted.

Dated: January 16, 2024

TOWN CLERK CERTIFICATION

I, Renee M. McQuillen, Town Clerk of the Town of Pittsford, New York, DO HEREBY CERTIFY that I have compared a copy of the Order as herein specified with the original in the minutes of the meeting of the Town Board of the Town of Pittsford, and that the same is a correct transcript thereof and the whole of the said original.

IN WITNESS WHEREOF, I have hereunto set my hand this ____ day of January, 2024.

Renee M. McQuillen, Town Clerk

**In the Matter of the Establishment
Of “Bridleridge Farms Park District”**

**PARK DISTRICT
PETITION**

STATE OF NEW YORK
COUNTY OF MONROE
TOWN OF PITTSFORD

The undersigned Developer herein, Bridleridge Farms, LLC, as and for its Petition to establish a Park District, respectfully submits to the Town Board of the Town of Pittsford the following:

1. The Developer hereby requests that The Town Board of the Town of Pittsford establish a Park District, in accordance with the provisions of Town Law §191, to be known as “Bridleridge Farms Park District” as shown on the “Park District Extension and Maintenance Areas” plan dated November 22, 2022. There are 118 total lots anticipated to be developed within the Park District.
2. The Developer is the sole owner of all the taxable real property comprising the proposed Park District, according to the latest completed assessment roll.
3. A map of the lands to be included in the proposed Park District, bearing Drawing Title “Bridleridge Farms Park District Map” and dated December 1, 2023, is annexed hereto as “Schedule A.”
4. The lands to be maintained in accordance with the proposed Park District are as set forth as Areas “A-I,” consisting of a total of approximately 2.58 acres, are shown on “Schedule B,” annexed hereto. All such lands to be maintained shall be dedicated to the Town of Pittsford prior to Town maintenance.
5. The proposed Park District lands are located entirely within the Town of Pittsford and outside any incorporated village.
6. All costs associated with establishing the proposed Park District are to be paid by the Developer and no public monies are to be expended for land acquisition or for improvements to the proposed Park District lands to be maintained.
7. Upon the establishment of the proposed Park District improvements and completion of the Maintenance and Warranty period of the Developer, as set forth herein, the expenses of maintaining such improvements are proposed to be paid by the property owners, annually on an ad valorem basis, in accordance with the provisions of New York State Town Law Section 202-a.
8. All plant materials shall be installed by the Developer, as is generally set forth on “Landscape Development Plan”, last revised January 2020, and attached as “Schedule C” and any future landscape plans approved by the Planning Board.
9. The Developer will maintain and warrant from failure all plant materials installed, as aforesaid. The “Maintenance and Warranty” period of the Developer, for Areas “A-I” will commence from the date of final inspection and approval of all plant material installation for each such area by a representative of the Town of Pittsford. The Maintenance and Warranty period will be for two (2) years and shall end at the end of the growing season (November 15th) of the last

year of Maintenance and Warranty period, provided, however, that the Maintenance and Warranty period shall be extended in the event that Certificates of Occupancy have not been issued for two-thirds (2/3) of the homes in the District and shall continue until such percentage of Certificates of Occupancy have been issued.

10. The level of maintenance to be performed by the Petitioner during the aforesaid Maintenance and Warranty period shall be in accordance with the following specifications:

Areas “A” “B” “H” & “I” (Entrances - Manicured Areas)

- Manicured Lawn – mowing and trimming to properly maintain 2½” height, 3 applications of fertilizer at a rate of 1 lb. nitrogen per 1,000 square feet annually. Weed and insect control shall be applied as necessary.
- Planting Beds – receives monthly weed control, annual edging to maintain a “V” shaped separation from the manicured lawn area, and annual reapplication of mulch.
- Plant Materials – receives annual pruning. Insect and disease control shall be applied, as necessary.
- Tree support stakes shall be removed after the first full growing season.
- Plant materials shall be fertilized during the spring of their second full growing season. Evergreens shall receive Doggett 30-7-10-XL Injecto Feed (or equivalent). Deciduous plants shall receive Doggett 32-7-7 XL Injecto Feed (or equivalent).
- Dead or declining plant material shall be replaced with like plants.
- An anti-desiccant (Wilt-Pruf) shall be applied to all evergreens each fall to provide for winter protection.

11. Continuing maintenance beyond the Developer’s Maintenance and Warranty period will become the responsibility of the Town of Pittsford. The Town will reserve discretion to determine the level of maintenance required, on an ongoing basis, reasonably consistent with the following:

Areas “A” “B” “H” & “I” (Entrances - Manicured Areas)

- Manicured Lawn – mowing and trimming to properly maintain 2½” height, 3 applications of fertilizer at a rate of 1 lb. nitrogen per 1,000 square feet annually. Weed and insect control shall be applied, as necessary.
- Entrance monuments/signs/fences – shall be maintained, repaired, replaced and/or removed as determined by the Pittsford Department of Public Works.
- Planting Beds – receives monthly weed control, annual edging to maintain a “V” shaped separation from the manicured lawn area, and annual reapplication of mulch.
- Plant Materials – receives annual pruning, as necessary. Insect and disease control shall be applied, as necessary.
- Within the five (5) year period following Petitioner’s warranty period, dead or declining plant material shall be replaced with like plants.

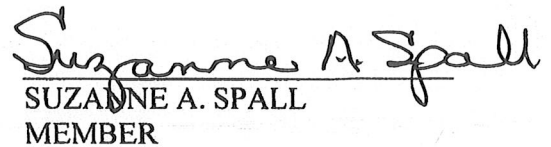
12. The property that is the subject of this Petition consists of approximately 102.26 acres, located on the West side of Clover Street, Pittsford, New York, and includes the following streets: Bridleridge Farms, Canterbrook Meadows, Hollow Oak Trail.

13. Based upon the foregoing, the Petitioner herein respectfully request that the Town Board of the Town of Pittsford approve and establish the "Bridleridge Farms Park District" as shown on "Park District Extension and Maintenance Areas" dated November 22, 2022, "Schedule B."

Property located on the West side of Clover Street and South of I-90, Pittsford, New York
Tax Account #191.01-1-18.1

BY BRIDLERIDGE FARMS, LLC

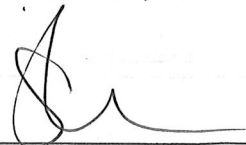

THEODORE F. SPALL, JR.
MEMBER


SUZANNE A. SPALL
MEMBER

STATE OF NEW YORK)
COUNTY OF MONROE) ss.

On the 21st day of December, 2023 before me, the undersigned, a Notary Public in and for said State, personally appeared THEODORE F. SPALL, JR., personally known to me or proved to me on the basis of satisfactory evidence to be the individual whose name is subscribed to the within instrument and acknowledged to me that he executed the same in his capacity, and that by his signature on the instrument, the individual, or the person upon behalf of which the individual acted, executed the instrument.

SUSAN SCHEPISI
NOTARY PUBLIC, STATE OF NEW YORK
Registration No. 01SC0006934
Qualified in Monroe County
Commission Expires May 04, 2027


NOTARY PUBLIC

STATE OF NEW YORK)
COUNTY OF MONROE) ss.

On the 21st day of December, 2023 before me, the undersigned, a Notary Public in and for said State, personally appeared SUZANNE A. SPALL, personally known to me or proved to me on the basis of satisfactory evidence to be the individual whose name is subscribed to the within instrument and acknowledged to me that she executed the same in his capacity, and that by her signature on the instrument, the individual, or the person upon behalf of which the individual acted, executed the instrument.

SUSAN SCHEPISI
NOTARY PUBLIC, STATE OF NEW YORK
Registration No. 01SC0006934
Qualified in Monroe County
Commission Expires May 04, 2027



NOTARY PUBLIC

EXHIBIT A
Proposed Description of the
Bridleridge Farms Park District

ALL THAT TRACT OR PARCEL OF LAND containing 83.929 acres more or less, situate in the Phelps and Gorham Purchase, Township 12, Range 5, Town Lots 40, 42 and 44, Town of Pittsford, County of Monroe, and State of New York, as shown on the drawing entitled "Bridleridge Farms, Section 2, Park District Map," prepared by BME Associates, having drawing number 2165SB-201, dated December 1, 2023, being more particularly bounded and described as follows:

Beginning at the intersection of the westerly right-of-way line of South Clover Street-N.Y.S. Route 65 (Right-of-Way Width Varies) with the northerly boundary line of lands now or formally of Anne La Manna (T.A. No. 191.01-1-17); thence

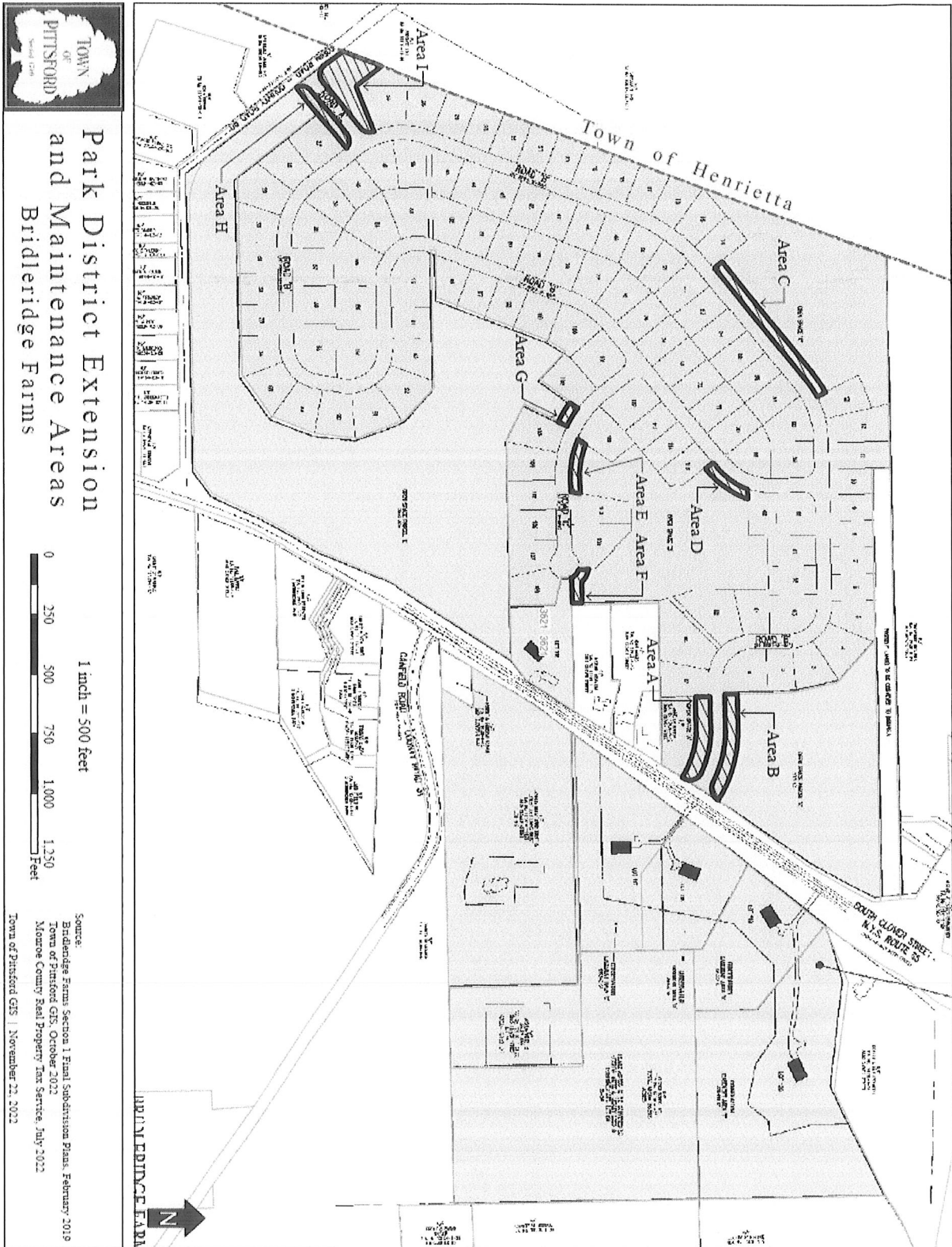
1. S 88°54'15" W, a distance of 689.65 feet to a point; thence
2. N 16°57'02" W, a distance of 40.47 feet to a point; thence
3. N 46°14'02" E, a distance of 302.64 feet to a point; thence
4. Northwesterly, along a non-tangent curve to the right, having a radius of 180.00 feet and a chord bearing of N 46°57'20"W, a distance of 20.04 feet to a point; thence
5. S 46°14'02" W, a distance of 291.41 feet to a point; thence
6. N 16°57'02" W, a distance of 85.59 feet to a point; thence
7. N 01°05'45" W, a distance of 312.96 feet to a point; thence
8. S 88°54'15" W, a distance of 220.00 feet to a point; thence
9. S 01°05'45" E, a distance of 80.00 feet to a point; thence
10. S 88°54'15" W, a distance of 198.11 feet to a point; thence
11. Southwesterly, along a non-tangent curve to the right, having a radius of 280.00 feet and a chord bearing of S 35°17'37" W, a distance of 153.16 feet to a point; thence
12. S 50°57'51" W, a distance of 32.35 feet to a point; thence
13. S 39°02'09" E, a distance of 146.00 feet to a point; thence
14. S 08°34'14" E, a distance of 62.65 feet to a point; thence
15. S 50°57'51" W, a distance of 231.91 feet to a point; thence
16. S 39°02'09" E, a distance of 125.00 feet to a point; thence
17. S 34°42'46" W, a distance of 172.41 feet to a point; thence

18. Easterly, along a non-tangent curve to the left, having a radius of 420.00 feet and a chord bearing of S 79°18'07" E, a distance of 172.91 feet to a point; thence
19. N 88°54'15" E, a distance of 53.05 feet to a point; thence
20. N 10°14'00" E, a distance of 254.97 feet to a point; thence
21. N 88°54'15" E, a distance of 120.00 feet to a point; thence
22. S 45°43'21" E, a distance of 215.36 feet to a point; thence
23. S 01°05'45" E, a distance of 70.00 feet to a point; thence
24. Northerly, along a non-tangent curve to the right, having a radius of 60.00 feet and a chord bearing of S 29°39'25" E, a distance of 88.85 feet to a point; thence
25. S 77°13'59" E, a distance of 119.65 feet to a point; thence
26. S 01°05'45" E, a distance of 186.96 feet to a point; thence
27. S 88°54'15" W, a distance of 689.61 feet to a point; thence
28. N 64°33'26" W, a distance of 165.56 feet to a point; thence
29. N 25°52'38" E, a distance of 200.00 feet to a point; thence
30. Northwesterly, along a non-tangent curve to the right, having a radius of 480.00 feet and a chord bearing of N 59°00'11" W, a distance of 85.78 feet to a point; thence
31. S 36°07'01" W, a distance of 200.00 feet to a point; thence
32. N 47°05'38" W, a distance of 159.63 feet to a point; thence
33. S 31°51'00" W, a distance of 85.41 feet to a point; thence
34. S 21°00'36" W, a distance of 491.37 feet to a point; thence
35. S 88°44'13" W, a distance of 194.51 feet to a point; thence
36. S 21°00'36" W, a distance of 21.61 feet to a point; thence
37. N 88°44'13" E, a distance of 578.29 feet to a point; thence
38. S 47°30'15" E, a distance of 182.73 feet to a point; thence
39. S 20°51'04" E, a distance of 215.34 feet to a point; thence
40. S 05°58'25" W, a distance of 170.14 feet to a point; thence

41. S 21°15'35" W, a distance of 197.16 feet to a point; thence
42. S 54°32'22" W, a distance of 213.21 feet to a point; thence
43. S 88°44'13" W, a distance of 831.70 feet to a point; thence
44. N 38°22'44" W, a distance of 441.58 feet to a point; thence
45. S 51°37'16" W, a distance of 148.99 feet to a point; thence
46. Southeasterly, along a non-tangent curve to the left, having a radius of 50.00 feet and a chord bearing of S 32°36'38" E, a distance of 10.07 feet to a point on the northeasterly right-of-way line of Tobin Road (66' Right-of-Way); thence
47. N 38°22'44" W, along said northeasterly right-of-way line, a distance of 252.06 feet to a point; thence
48. N 21°00'36" E, a distance of 1,633.08 feet to a point; thence
49. S 48°00'50" E, a distance of 53.30 feet to a point; thence
50. N 50°57'51" E, a distance of 263.77 feet to a point; thence
51. S 39°02'09" E, a distance of 180.00 feet to a point; thence
52. N 50°57'51" E, a distance of 680.96 feet to a point; thence
53. N 39°02'09" W, a distance of 190.00 feet to a point; thence
54. N 59°04'29" E, a distance of 152.32 feet to a point; thence
55. N 81°41'53" E, a distance of 158.63 feet to a point; thence
56. N 88°54'15" E, a distance of 818.14 feet to a point; thence
57. S 49°31'13" E, a distance of 235.28 feet to a point; thence
58. S 13°05'14" E, a distance of 184.82 feet to a point; thence
59. S 02°48'51" E, a distance of 118.92 feet to a point; thence
60. S 01°05'45" E, a distance of 120.00 feet to a point; thence
61. N 88°54'15" E, a distance of 148.37 feet to a point; thence
62. Easterly, along a tangent curve to the right, having a radius of 540.00 feet and a chord bearing of S 74°14'48" E, a distance of 317.60 feet to a point on the aforementioned westerly right-of-way line of South Clover Street-N.Y.S. Route 65; thence

63. S 35°19'28" W, along said westerly right-of-way line, a distance of 28.32 feet to a point; thence
64. S 31°17'14" W, continuing along said westerly right-of-way line, a distance of 244.50 feet to the Point of Beginning.

SCHEDULE B

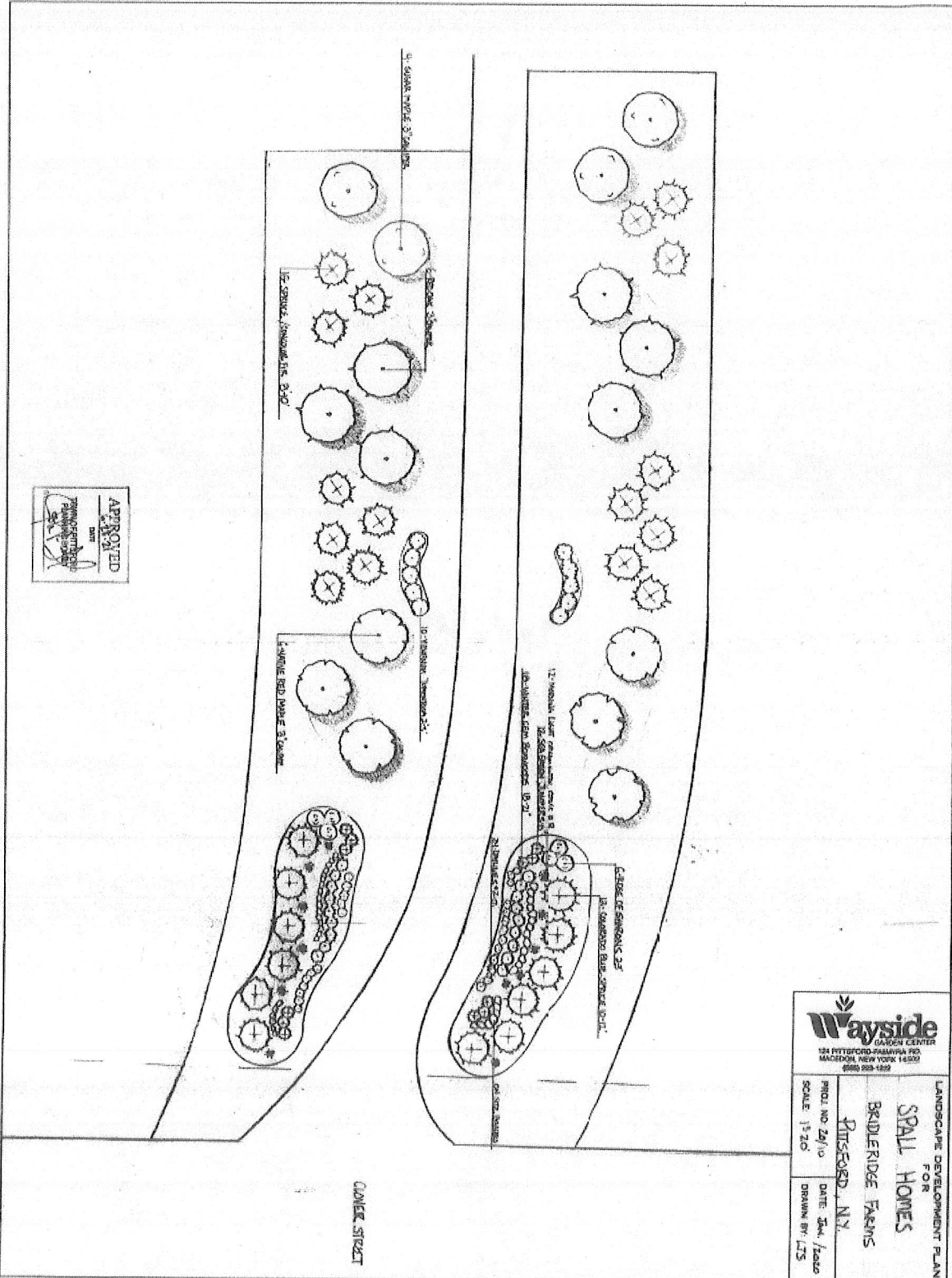


TOWN OF PITTSFORD
Park District Extension and Maintenance Areas
Bridleridge Farms

1 inch = 500 feet
 0 250 500 750 1,000 1,250 Feet

Source:
 Bridleridge Farms' Section 1 Final Subdivision Plans, February 2019
 Town of Pittsford GIS, October 2012
 Monroe County Real Property Tax Service, July 2012
 Town of Pittsford GIS | November 21, 2012

SCHEDULE C



Wayside
GARDEN CENTER
124 FITZGERALD PARKWAY #102
MADISON, NEW YORK 14552
585 233-1222

LANDSCAPE DEVELOPMENT PLAN
FOR
SPALL HOMES
BRIDLE RIDGE FARMS
PITTSFORD, NY

PROJ. NO. 24/10
SCALE: 1" = 20'

DATE: 2nd, 2020
DRAWN BY: LJS

TOWN BOARD
TOWN OF PITTSFORD

STATE OF NEW YORK
COUNTY OF MONROE

In the Matter of the Establishment
Of the Bridleridge Farms Park District

Certificate of
Maintenance Costs

STATE OF NEW YORK
COUNTY OF MONROE
TOWN OF PITTSFORD

The undersigned, in her capacity of Parks Foreman of the Town of Pittsford, respectfully submits to the Town Board of the Town of Pittsford, relative to the above-proposed Park District, the following:

1. The Petition herein set forth certain specific maintenance requirements, which are to be the responsibility of the Town of Pittsford subsequent to the creation of the proposed Park District and following the expiration of the maintenance and warranty period of the Developer. The maintenance requirements relate to the proposed plant materials to be installed in accordance with the Landscape Plan annexed to the Petition.
2. The undersigned has reviewed the maintenance requirements as well as the Landscape Plan in order to estimate the typical annual cost per homeowner in the Park District, in accordance with the requirements of New York State Town Law Section 193 (1).
3. It is estimated that the total maintenance costs will be approximately \$10,000.00 annually. Based upon the fact that the Park District is comprised of 118 single-family homeowner lots, the typical annual cost per homeowner will be in the amount of approximately \$84.75.
4. The undersigned herein respectfully submits the above information to the Town Board of the Town of Pittsford relative to the proposed "Bridleridge Farms Park District".

Dated: 11/12/24, 2023

Pittsford Parks Department

By: 
Jessica Neal, Parks Foreman

TOWN OF PITTSFORD

**STATE OF NEW YORK
COUNTY OF MONROE**

**In the Matter of Establishment
Of “Bridleridge Farms Park District”**

**TOWN ASSESSOR’S
CERTIFICATE**


STATE OF NEW YORK
COUNTY OF MONROE
TOWN OF PITTSFORD

The undersigned, Town Assessor of the Town of Pittsford, Monroe County, New York, hereby certifies the following with respect to the Petition for establishment of the above Park District, and based upon the submitted petition documents and following review of the 2023 Assessment Roll for the Town of Pittsford, which is the latest completed Assessment Roll for the Town, with respect to the assessed valuation of the land described in the Petition:

1. The Petitioner herein, represents ownership of 100% of the assessed value of the real property within the area of the proposed District.
2. The Petitioner is in possession and control of 102.26 acres of taxable property within the area of the proposed of Extension to the District, designated as Tax Account number set forth herein. The proposed Park District encompasses 83.929 acres.
3. The total taxable real property is assessed to the Petitioner, as reflected on the latest completed assessment roll, and the tax account number and the assessed valuation thereof are as follows:

Parcel Number	Street #	Street Name	Assessed Value	Signed
Part of 191.01-1-18.1		Clover Street	\$306,800	\$306,800
Total			\$306,800	\$306,800

Given under my hand and the seal of the Town of Pittsford, New York this 13th day of December 2023.



 Stephen H. Robson, Town Assessor

MEMORANDUM

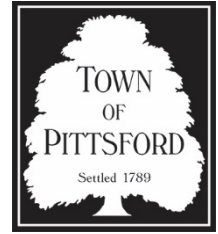
To: Pittsford Town Board

From: Paul Schenkel - Commissioner of Public Works

Date: January 12, 2024

Regarding: Bridleridge Farms 1-2 Pole Lighting District

For Meeting On: January 16, 2024



Ladies and Gentlemen:

The Department of Public Works has received a Petition, signed by the sole landowner, for the above proposed 1-2 Pole Lighting District, on the Bridleridge Farms Subdivision, on the west side of Clover Street, just south of the NYS Thruway. The Department is recommending that the Town Board set a public hearing to consider this matter.

Attached are the following:

- Proposed "Order for Hearing"
- The signed Petition for Lighting District, including
 - Exhibit A Metes & Bounds
 - Exhibit B Certificate of Operational Costs
 - Schedule A Map for the proposed Lighting District
 - Schedule B Map showing the proposed streetlights
- Assessor's Certificate, signed

The proposed date for the public hearing is February 6, 2024, as is set forth in the proposed Order.

RESOLUTION FOR ORDER

I move that a Public Hearing be set for February 6, 2024, at 6:00 P.M., local time, at Town Hall, to consider the approval of the proposed "Bridleridge Farms 1-2 Pole Lighting District", as set forth in the written Order.

At a Regular Meeting of the Town Board of the Town of Pittsford, New York, held, at the Town Hall, in the Town of Pittsford, New York, on the 16th day of January 2024.

PRESENT:

William A. Smith, Jr., Supervisor
Kim Taylor, Deputy Supervisor
Naveen Havannavar, Councilperson
Cathleen A. Koshykar, Councilperson
Stephanie Townsend, Councilperson

ABSENT: NONE

TOWN BOARD
TOWN OF PITTSFORD

STATE OF NEW YORK
COUNTY OF MONROE

In the Matter of

THE ESTABLISHMENT OF THE 1-2 POLE
LIGHTING DISTRICT, EXTENSION NO. 13
BRIDLERIDGE FARMS SUBDIVISION
IN THE TOWN OF PITTSFORD,
MONROE COUNTY, NEW YORK

**ORDER FOR
PUBLIC HEARING**

WHEREAS, a Petition, signed by the sole owner of taxable real property situated in the proposed “1-2 Pole Lighting District, Extension No. 13 Bridleridge Farms Subdivision,” has been presented to the Town Board of Pittsford, Monroe County, New York, for the proposed creation of the aforesaid Lighting District to be located in the Bridleridge Farms Subdivision, the said proposed District being located in general terms on the streets of Bridleridge Farms, Canterbrook Meadows, and Hollow Oak Trail, situated on the West side of Clover Street and South of I-490, including 118 parcels anticipated to be developed, all as is more particularly set forth in the Petition and maps as described herein; and

WHEREAS, no public monies are proposed to be expended for the creation of the Refuse District; and

WHEREAS, the anticipated Lighting District Fees to be paid annually by the owner of each home within the District, is in the amount of \$14.71;

NOW, ON MOTION duly made and seconded, it is

RESOLVED AND ORDERED, that a public hearing be held before the Town Board of the Town of Pittsford, at the Town of Pittsford Town Hall, on the 6th day of February 2024, at 6:00 o'clock P.M., Local Time, to consider the said Petition and to hear all persons interested therein, and for such other and further action on the part of

the Town Board with relation to the said Petition as may be required by law or proper in the premises; and it is further

RESOLVED AND ORDERED, that a copy of the within Order be duly published in The Daily Record, which paper is designated as the official paper for such publication, and a copy of the said Order be posted on the bulletin board of the Town Clerk of the Town of Pittsford, New York, maintained pursuant to Section 30 of the Town Law, not less than ten (10) nor more than twenty (20) days prior to the date of the said hearing.

Said matter having been put to a vote, the following votes were recorded:

William A. Smith, Jr.	VOTING
Kim Taylor	VOTING
Naveen Havannavar	VOTING
Cathleen A. Koshykar	VOTING
Stephanie Townsend	VOTING

The Order was thereupon declared duly adopted.

Dated: January 16, 2024

TOWN CLERK CERTIFICATION

I, Renee M. McQuillen, Town Clerk of the Town of Pittsford, New York, DO HEREBY CERTIFY that I have compared a copy of the Order as herein specified with the original in the minutes of the meeting of the Town Board of the Town of Pittsford, and that the same is a correct transcript thereof and the whole of the said original.

IN WITNESS WHEREOF, I have hereunto set my hand this ____ day of January, 2024.

Renee M. McQuillen, Town Clerk

**In the Matter of Extension No. 13 of the
“Pittsford Consolidated Lighting District 1-2 Poles”
Bridleridge Farms Subdivision**

**LIGHTING DISTRICT
PETITION**

STATE OF NEW YORK
COUNTY OF MONROE
TOWN OF PITTSFORD

Petitioner herein, as and for their Petition to extend the above Lighting District, respectfully submit to the Town Board of the Town of Pittsford the following:

1. The Petitioner hereby request that The Town Board of the Town of Pittsford extend the Pittsford Consolidated Lighting District 1 - 2 Poles, originally established by Town Board Resolution dated February 7, 1995, in accordance with the provisions of Town Law Section 191, to be known as the “Extension No. 13 - Bridleridge Farms Subdivision.” There are 118 total lots anticipated to be developed within the extension of the Lighting District.
2. The Petitioner is the sole owner all of the taxable real property comprising the proposed Lighting District Extension, according to the latest completed assessment roll.
3. The metes and bounds legal description of the proposed Extension is annexed hereto, as “Exhibit A.” A map of the lands to be included in the proposed extension to the Lighting District, bearing Drawing Title “Bridleridge Farms Park District Map” and dated December 1, 2023, is annexed hereto as “Schedule A.”
4. A map of the proposed Bridleridge Farms Subdivision and two (2) total proposed streetlights, bearing Drawing Title “1-2 Pole Lighting District Extension No. 13 Bridleridge Farms” and dated November 21, 2022, is annexed hereto as “Schedule B.”
5. The proposed Extension lands are located entirely within the Town of Pittsford and outside any incorporated village.
6. All costs associated with establishing the proposed Extension, including, but not limited to the installation of poles, fixtures, and wiring, are to be paid by the Petitioner, Bridleridge Farms, LLC, and no public monies are to be expended for land acquisition or for improvements to the proposed Extension.
7. The estimated **annual expenses** for the maintenance of the poles, fixtures, and wiring, as well as electrical service thereto is in the amount of **\$14.71 per unit** as set forth on the copy of the Certificate of Operation Cost, annexed hereto as “Exhibit B.” Until such time as the Town Board has approved its first annual budget for the above expenses, the Petitioner, Bridleridge Farms, LLC, will be fully responsible for all such expenses.
8. The expenses set forth in the preceding paragraph are proposed to be paid by the property owners annually on a benefit basis, in accordance with the provisions of New York State Town Law Section 202-a.

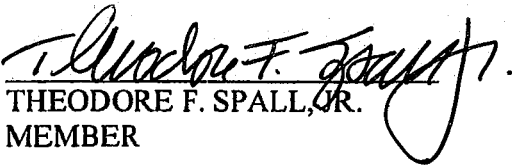
9. The property that is the subject of this Petition consists of approximately 102.26 acres, located on the west side of Clover Street and south side of I-90, Pittsford, New York, currently bearing Tax Account #191.01-1-18.1, as set forth herein. The proposed Lighting District Extension encompasses 83.929 acres.
10. Based upon the foregoing, the Petitioners herein respectfully request that the Town Board of the Town of Pittsford approve and establish the within proposed Lighting District Extension.

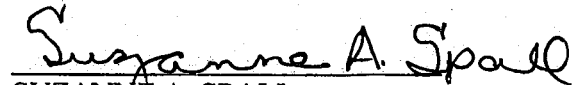
PETITIONER
Property Owner & Signature

Bridleridge Farms, LLC
30 Grove Street
Pittsford, NY 14534

Property located on the West side of Clover Street and South of I-90, Pittsford, New York
Tax Account #191.01-1-18.1

BY BRIDLERIDGE FARMS, LLC



THEODORE F. SPALL, JR.
MEMBER


SUZANNE A. SPALL
MEMBER

STATE OF NEW YORK)
COUNTY OF MONROE) ss.

On the 20th day of December, 2023 before me, the undersigned, a Notary Public in and for said State, personally appeared THEODORE F. SPALL, JR., personally known to me or proved to me on the basis of satisfactory evidence to be the individual whose name is subscribed to the within instrument and acknowledged to me that he executed the same in his capacity, and that by his signature on the instrument, the individual, or the person upon behalf of which the individual acted, executed the instrument.

SUSAN SCHEPISI
NOTARY PUBLIC, STATE OF NEW YORK
Registration No. 01SC0006934
Qualified in Monroe County
Commission Expires May 04, 2027


NOTARY PUBLIC

STATE OF NEW YORK)
COUNTY OF MONROE) ss.

On the 20th day of December, 2023 before me, the undersigned, a Notary Public in and for said State, personally appeared SUZANNE A. SPALL, personally known to me or proved to me on the basis of satisfactory evidence to be the individual whose name is subscribed to the within instrument and acknowledged to me that she executed the same in his capacity, and that by her signature on the instrument, the individual, or the person upon behalf of which the individual acted, executed the instrument.

SUSAN SCHEPISI
NOTARY PUBLIC, STATE OF NEW YORK
Registration No. 01SC0006934
Qualified in Monroe County
Commission Expires May 04, 2027

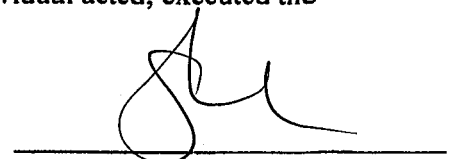

NOTARY PUBLIC

EXHIBIT A
Proposed Description of
Bridleridge Farms Lighting District

ALL THAT TRACT OR PARCEL OF LAND containing 83.929 acres more or less, situate in the Phelps and Gorham Purchase, Township 12, Range 5, Town Lots 40, 42 and 44, Town of Pittsford, County of Monroe, and State of New York, as shown on the drawing entitled "Bridleridge Farms, Section 2, Park District Map," prepared by BME Associates, having drawing number 2165SB-201, dated December 1, 2023, being more particularly bounded and described as follows:

Beginning at the intersection of the westerly right-of-way line of South Clover Street-N.Y.S. Route 65 (Right-of-Way Width Varies) with the northerly boundary line of lands now or formally of Anne La Manna (T.A. No. 191.01-1-17); thence

1. S 88°54'15" W, a distance of 689.65 feet to a point; thence
2. N 16°57'02" W, a distance of 40.47 feet to a point; thence
3. N 46°14'02" E, a distance of 302.64 feet to a point; thence
4. Northwesterly, along a non-tangent curve to the right, having a radius of 180.00 feet and a chord bearing of N 46°57'20" W, a distance of 20.04 feet to a point; thence
5. S 46°14'02" W, a distance of 291.41 feet to a point; thence
6. N 16°57'02" W, a distance of 85.59 feet to a point; thence
7. N 01°05'45" W, a distance of 312.96 feet to a point; thence
8. S 88°54'15" W, a distance of 220.00 feet to a point; thence
9. S 01°05'45" E, a distance of 80.00 feet to a point; thence
10. S 88°54'15" W, a distance of 198.11 feet to a point; thence
11. Southwesterly, along a non-tangent curve to the right, having a radius of 280.00 feet and a chord bearing of S 35°17'37" W, a distance of 153.16 feet to a point; thence
12. S 50°57'51" W, a distance of 32.35 feet to a point; thence
13. S 39°02'09" E, a distance of 146.00 feet to a point; thence
14. S 08°34'14" E, a distance of 62.65 feet to a point; thence
15. S 50°57'51" W, a distance of 231.91 feet to a point; thence
16. S 39°02'09" E, a distance of 125.00 feet to a point; thence
17. S 34°42'46" W, a distance of 172.41 feet to a point; thence

18. Easterly, along a non-tangent curve to the left, having a radius of 420.00 feet and a chord bearing of S 79°18'07" E, a distance of 172.91 feet to a point; thence
19. N 88°54'15" E, a distance of 53.05 feet to a point; thence
20. N 10°14'00" E, a distance of 254.97 feet to a point; thence
21. N 88°54'15" E, a distance of 120.00 feet to a point; thence
22. S 45°43'21" E, a distance of 215.36 feet to a point; thence
23. S 01°05'45" E, a distance of 70.00 feet to a point; thence
24. Northerly, along a non-tangent curve to the right, having a radius of 60.00 feet and a chord bearing of S 29°39'25" E, a distance of 88.85 feet to a point; thence
25. S 77°13'59" E, a distance of 119.65 feet to a point; thence
26. S 01°05'45" E, a distance of 186.96 feet to a point; thence
27. S 88°54'15" W, a distance of 689.61 feet to a point; thence
28. N 64°33'26" W, a distance of 165.56 feet to a point; thence
29. N 25°52'38" E, a distance of 200.00 feet to a point; thence
30. Northwesterly, along a non-tangent curve to the right, having a radius of 480.00 feet and a chord bearing of N 59°00'11" W, a distance of 85.78 feet to a point; thence
31. S 36°07'01" W, a distance of 200.00 feet to a point; thence
32. N 47°05'38" W, a distance of 159.63 feet to a point; thence
33. S 31°51'00" W, a distance of 85.41 feet to a point; thence
34. S 21°00'36" W, a distance of 491.37 feet to a point; thence
35. S 88°44'13" W, a distance of 194.51 feet to a point; thence
36. S 21°00'36" W, a distance of 21.61 feet to a point; thence
37. N 88°44'13" E, a distance of 578.29 feet to a point; thence
38. S 47°30'15" E, a distance of 182.73 feet to a point; thence
39. S 20°51'04" E, a distance of 215.34 feet to a point; thence
40. S 05°58'25" W, a distance of 170.14 feet to a point; thence

41. S 21°15'35" W, a distance of 197.16 feet to a point; thence
42. S 54°32'22" W, a distance of 213.21 feet to a point; thence
43. S 88°44'13" W, a distance of 831.70 feet to a point; thence
44. N 38°22'44" W, a distance of 441.58 feet to a point; thence
45. S 51°37'16" W, a distance of 148.99 feet to a point; thence
46. Southeasterly, along a non-tangent curve to the left, having a radius of 50.00 feet and a chord bearing of S 32°36'38" E, a distance of 10.07 feet to a point on the northeasterly right-of-way line of Tobin Road (66' Right-of-Way); thence
47. N 38°22'44" W, along said northeasterly right-of-way line, a distance of 252.06 feet to a point; thence
48. N 21°00'36" E, a distance of 1,633.08 feet to a point; thence
49. S 48°00'50" E, a distance of 53.30 feet to a point; thence
50. N 50°57'51" E, a distance of 263.77 feet to a point; thence
51. S 39°02'09" E, a distance of 180.00 feet to a point; thence
52. N 50°57'51" E, a distance of 680.96 feet to a point; thence
53. N 39°02'09" W, a distance of 190.00 feet to a point; thence
54. N 59°04'29" E, a distance of 152.32 feet to a point; thence
55. N 81°41'53" E, a distance of 158.63 feet to a point; thence
56. N 88°54'15" E, a distance of 818.14 feet to a point; thence
57. S 49°31'13" E, a distance of 235.28 feet to a point; thence
58. S 13°05'14" E, a distance of 184.82 feet to a point; thence
59. S 02°48'51" E, a distance of 118.92 feet to a point; thence
60. S 01°05'45" E, a distance of 120.00 feet to a point; thence
61. N 88°54'15" E, a distance of 148.37 feet to a point; thence
62. Easterly, along a tangent curve to the right, having a radius of 540.00 feet and a chord bearing of S 74°14'48" E, a distance of 317.60 feet to a point on the aforementioned westerly right-of-way line of South Clover Street-N.Y.S. Route 65; thence

63. S 35°19'28" W, along said westerly right-of-way line, a distance of 28.32 feet to a point; thence

64. S 31°17'14" W, continuing along said westerly right-of-way line, a distance of 244.50 feet to the Point of Beginning.

EXHIBIT B

Certificate of Operational Costs

STATE OF NEW YORK
COUNTY OF MONROE
TOWN OF PITTSFORD


The Commissioner of Public Works of the Town of Pittsford, respectfully submits to the Town Board of the Town of Pittsford, relative to the above-proposed Lighting District Extension, the following:

1. The Petition herein sets forth certain specific maintenance requirements, which are to be the responsibility of the Town of Pittsford subsequent to the creation of the proposed Lighting District Extension. The maintenance requirements relate to the maintenance of the poles, fixtures, and wiring, as well as electrical service thereto.
2. The undersigned has reviewed the above maintenance requirements, as well as the current annual expenses of the Lighting District, in order to estimate the typical annual cost per homeowner in the Lighting District, in accordance with the requirements of New York State Town Law Section 193(1).
3. The maintenance expenses for the most recent fiscal year for the Pittsford Consolidated Lighting District 1-2 Poles were in the amount of \$15.44 per homeowner. Since the proposed Extension to the Lighting District will add approximately \$742.84 in yearly maintenance costs and involves the addition of 118 new homes to the District, the annual cost for a typical homeowner within the District could be approximately \$14.71 for subsequent years.

The undersigned herein respectfully submits the above information to the Town Board of the Town of Pittsford relative to the above proposed Lighting District Extension

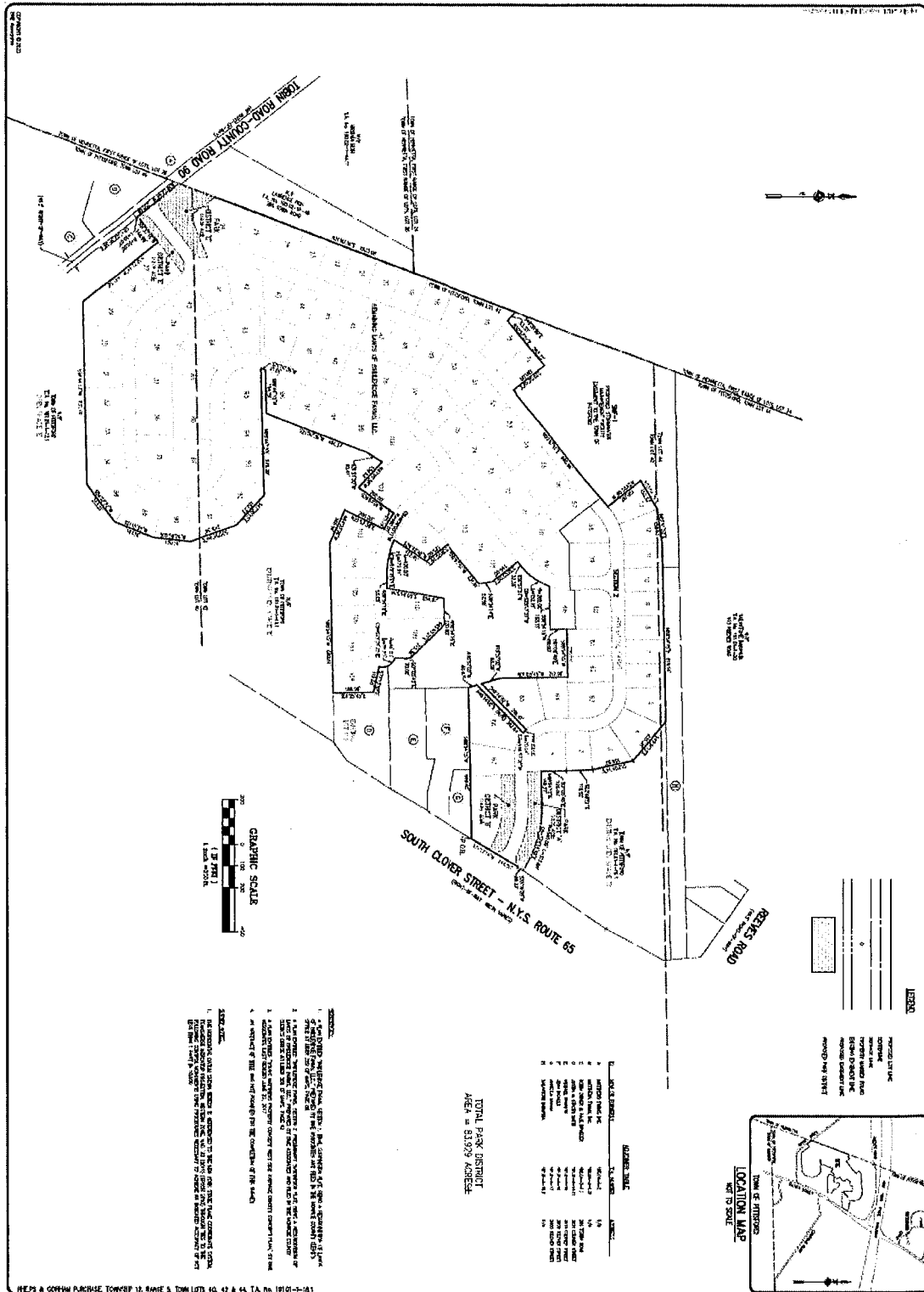
12/13/2023

Date



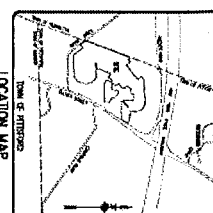
Paul Schenkel, Commissioner of Public Works

SCHEDULE A



LEGEND

[Symbol]	PROPOSED LOT LINE
[Symbol]	EXISTING LOT LINE
[Symbol]	PROPOSED DRIVE
[Symbol]	EXISTING DRIVE
[Symbol]	PROPOSED DRIVE
[Symbol]	EXISTING DRIVE
[Symbol]	PROPOSED DRIVE
[Symbol]	EXISTING DRIVE
[Symbol]	PROPOSED DRIVE
[Symbol]	EXISTING DRIVE



LEGEND

[Symbol]	PROPOSED LOT LINE	1/4"
[Symbol]	EXISTING LOT LINE	1/8"
[Symbol]	PROPOSED DRIVE	1/4"
[Symbol]	EXISTING DRIVE	1/8"
[Symbol]	PROPOSED DRIVE	1/4"
[Symbol]	EXISTING DRIVE	1/8"
[Symbol]	PROPOSED DRIVE	1/4"
[Symbol]	EXISTING DRIVE	1/8"
[Symbol]	PROPOSED DRIVE	1/4"
[Symbol]	EXISTING DRIVE	1/8"

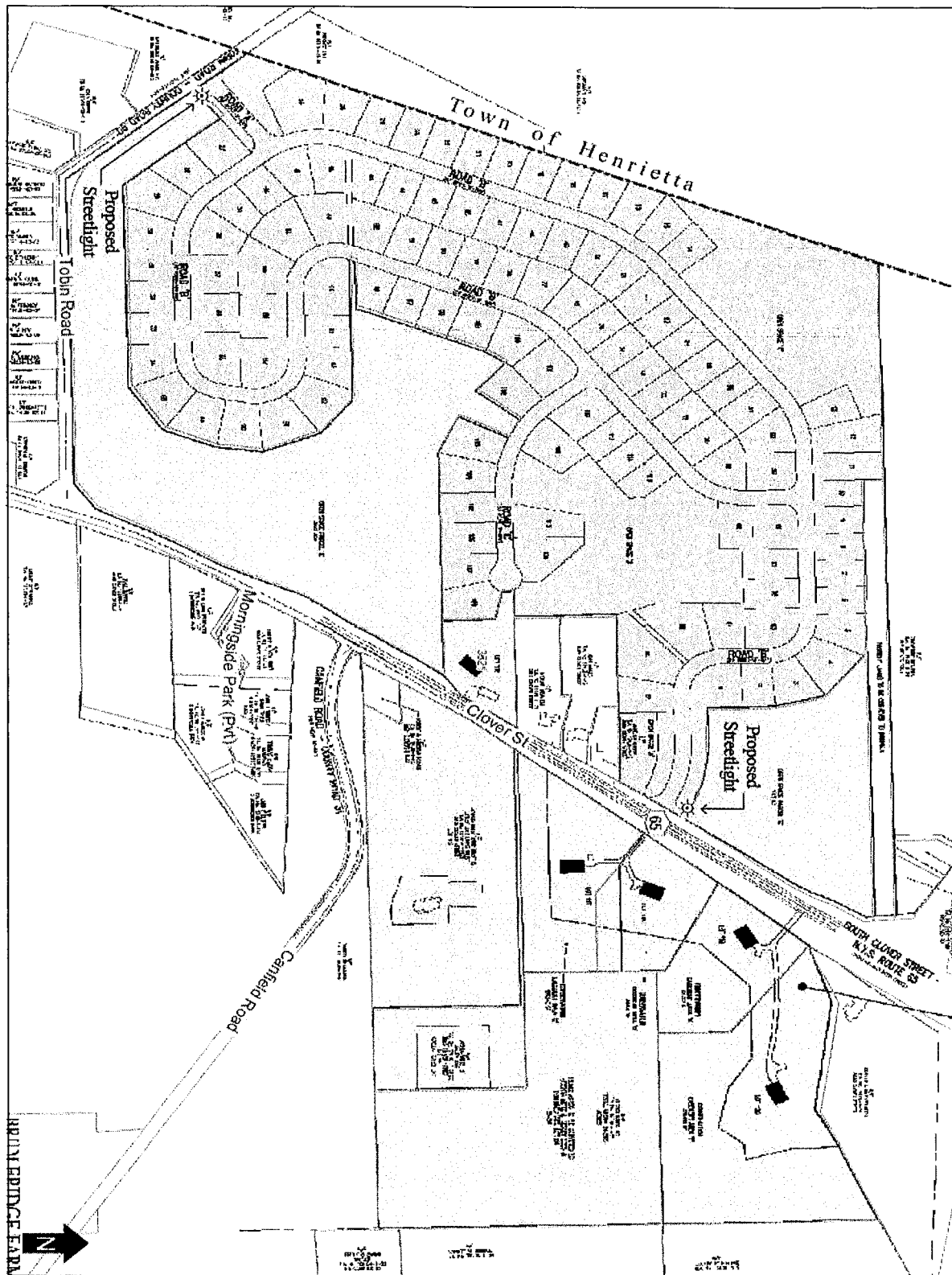
TOTAL PARK DISTRICT
AREA = 81,909 SQUARE FEET

- NOTES:**
1. THE DISTRICT MAP, SHOWING THE LOTS, STREETS AND DRIVE, IS A PRELIMINARY PLAN AND IS SUBJECT TO THE APPROVAL OF THE BOARD OF SUPERVISORS AND THE BOARD OF HEALTH.
 2. THE DISTRICT MAP, SHOWING THE LOTS, STREETS AND DRIVE, IS A PRELIMINARY PLAN AND IS SUBJECT TO THE APPROVAL OF THE BOARD OF SUPERVISORS AND THE BOARD OF HEALTH.
 3. THE DISTRICT MAP, SHOWING THE LOTS, STREETS AND DRIVE, IS A PRELIMINARY PLAN AND IS SUBJECT TO THE APPROVAL OF THE BOARD OF SUPERVISORS AND THE BOARD OF HEALTH.
 4. THE DISTRICT MAP, SHOWING THE LOTS, STREETS AND DRIVE, IS A PRELIMINARY PLAN AND IS SUBJECT TO THE APPROVAL OF THE BOARD OF SUPERVISORS AND THE BOARD OF HEALTH.

REPS & COMPANY PLANNERS, TOWNSHIP 12, RANGE 5, TOWN LOTS 40, 42 & 44, TA No. 18101--181

<p>BRIDGEMAN FARMS DIVISION OF THE CITY OF NEW YORK PLANNING BOARD</p> <p>216558 200</p>	<p>PARK DISTRICT MAP</p>		<p>BME ASSOCIATES INCORPORATED ENGINEERS • SURVEYORS • LANDSCAPE ARCHITECTS</p> <p>110 WEST WEDGE LANE SUITE 100 ROSELAND, NEW YORK 11423 WWW.BMEASSOCIATES.COM</p>	<table border="1"> <tr> <td>1</td> <td>2</td> <td>3</td> <td>4</td> <td>5</td> <td>6</td> <td>7</td> <td>8</td> <td>9</td> <td>10</td> <td>11</td> <td>12</td> </tr> <tr> <td></td> <td></td> <td></td> <td></td> <td></td> <td></td> <td></td> <td></td> <td></td> <td></td> <td></td> <td></td> </tr> </table>	1	2	3	4	5	6	7	8	9	10	11	12												
1	2	3	4	5	6	7	8	9	10	11	12																	

SCHEDULE B



1-2 Pole Lighting District Extension No. 13 Bridleridge Farms

1 inch = 500 feet



Source:
 Bridleridge Farms Section 1 Final Subdivision Plans, February 2019
 Town of Pittsford GIS, October 2022
 Monroe County Real Property Tax Service, July 2022
 Town of Pittsford GIS | November 21, 2022

TOWN OF PITTSFORD

**STATE OF NEW YORK
COUNTY OF MONROE**

**In the Matter of Extension No. 13 to the
“Pittsford Consolidated Lighting District
1-2 Poles” Bridleridge Farms Subdivision**

**TOWN ASSESSOR’S
CERTIFICATE**

STATE OF NEW YORK
COUNTY OF MONROE
TOWN OF PITTSFORD

The undersigned, Town Assessor of the Town of Pittsford, Monroe County, New York, hereby certifies the following with respect to the Petition for Extension of the above Lighting District, and based upon the submitted petition documents and following review of the 2023 Assessment Roll for the Town of Pittsford, which is the latest completed Assessment Roll for the Town, with respect to the assessed valuation of the land described in the Petition:

1. The Petitioner herein, represents ownership of 100% of the assessed value of the real property within the area of the proposed Extension to the District.
2. The Petitioner is in possession and control of 102.26 acres of taxable property within the area of the proposed of Extension to the District, designated as Tax Account number set forth herein. The proposed Lighting District encompasses 83.929 acres.
3. The total taxable real property is assessed to the Petitioner, as reflected on the latest completed assessment roll, and the tax account number and the assessed valuation thereof are as follows:

Parcel Number	Street #	Street Name	Assessed Value	Signed
Part of 191.01-1-18.1		Clover Street	\$306,800	\$306,800
Total			\$306,800	\$306,800

Given under my hand and the seal of the Town of Pittsford, New York this 13th day of December 2023.



 Stephen H. Robson, Town Assessor

**ACCOUNTS PAYABLE LISTING
FOR TOWN BOARD APPROVAL
JANUARY 2024**

VENDOR NAME	APPV BY	VOUCHER NO	INV #	DESCRIPTION	AMOUNT
ABVI - GOODWILL	BWL	164364	IN0014632	2023 DECEMBER SENIOR BILLING	2,076.80
				VENDOR TOTAL	2,076.80
ACTION PROTECTIVE GROUP, INC	PJS	164485	324998	BUILDING SECURITY	3,054.06
				VENDOR TOTAL	3,054.06
ACTION TELEPHONE EXCHANGE	PJS	164348	198001022024	AFTER HRS ANSWER SVC	170.87
				VENDOR TOTAL	170.87
ADAMS LECLAIR, LLP	BWL	164474	3406	MARK GIANNINY	162.50
	BWL	164474	3407	NORTHFIELD COMMONS	357.50
	BWL	164474	3408	GENERAL MATTERS	65.00
	BWL	164474	3409	CHASE BANK	195.00
	BWL	164474	3410	PITTSFORD LP ASSOCIATES	150.00
				VENDOR TOTAL	930.00
ADMAR SUPPLY COMPANY, INC	PJS	164462	RO2050461	SKID STEER RENTAL	577.80
	PJS	164383	RO2050108	BACKPACK BLOWER	539.00
	PJS	164492	RO2049750	ORINGS,AIR FILTER	1,036.13
				VENDOR TOTAL	2,152.93
ALRO STEEL CORPORATION	PJS	164495	105197627	REBAR	668.00
	PJS	164495	105177626	REBAR	1,336.00
				VENDOR TOTAL	2,004.00
AMAZON CAPITAL SERVICES, INC.	AMM	164320	11CC-YVCH-X4WT	MISCELANEOUS IT OFFICE SUPPLIES	458.06

**ACCOUNTS PAYABLE LISTING
FOR TOWN BOARD APPROVAL
JANUARY 2024**

VENDOR NAME	APPV BY	VOUCHER NO	INV #	DESCRIPTION	AMOUNT
				VENDOR TOTAL	458.06
AMERICAN LEGION RAYSON-MILLER POST # 899	BWL	164452	2023 RENT	2023 ANNUAL RENT	300.00
				VENDOR TOTAL	300.00
ASCAP	BWL	164300	500609948	2024 MUSIC LICENSE	500.00
				VENDOR TOTAL	500.00
ASSOCIATION OF TOWNS OF NEW YORK STATE	BWL	164303	2024 DUES	2024 ASSOCIATION DUES	1,650.00
				VENDOR TOTAL	1,650.00
AUTO VALUE PARTS STORES	PJS	164408	674651/L	HOSE CLAMPS #440	6.08
	PJS	164380	675483/L	401-2 HUB BEARINGS	450.88
				VENDOR TOTAL	456.96
BEE RELENTLESS BOXING LLC	JRH	164431	012024CASTRO	2024 JANUARY INSTRUCTOR PAYMENT	168.00
				VENDOR TOTAL	168.00
BEEMAN	JRH	164445	012024BEEMAN	2024 JANUARY INSTRUCTOR PAYMENT	21.00
				VENDOR TOTAL	21.00
BENEFIT RESOURCE, LLC	BWL	164328	1001718	PRE-TAX MONTHLY ADMINISTRATION DEC 2023	165.00
				VENDOR TOTAL	165.00
BLAIR SUPPLY CORP	PJS	164389	1264157	SDR 35	18,878.72

**ACCOUNTS PAYABLE LISTING
FOR TOWN BOARD APPROVAL
JANUARY 2024**

VENDOR NAME	APPV BY	VOUCHER NO	INV #	DESCRIPTION	AMOUNT
				VENDOR TOTAL	18,878.72
BMI	JRH	164453	51419870	ANNUAL LICENSING FEE MUSIC 01/01/24-12/3	391.50
				VENDOR TOTAL	391.50
BRIGHTON MOWER SERV., INC	PJS	164487	111803	SEALS	139.00
	PJS	164372	111664	AIR FILTER	26.97
				VENDOR TOTAL	165.97
BROOKS	PJS	164457	MB011024	REIMBURSE NOTARY EXAM & TRAVEL	83.71
				VENDOR TOTAL	83.71
CATALOG AND COMMERCE SOLUTIONS, LLC	AMM	164316	2451	WEBSITE MANAGEMENT Q1 (1/1/24-3/31/24)	1,650.00
				VENDOR TOTAL	1,650.00
CDW GOVERNMENT INC.	AMM	164476	NV60931	HP LASERJET MULTIFUNCTION PRINTERS + INK	673.03
				VENDOR TOTAL	673.03
CHASE CARD SERVICES	JRH	164332	122023AMAZON	AMAZON ORDER PANTHER PALS TOYS	741.53
	JRH	164455	01032024AMAZON	AMAZON ORDER AFTER SCHOOL PROGRAM	25.35
	AMM	164481	R02755367	TEAMVIEWER CORPORATE - 1/11/2024-1/10/20	2,482.80
	BWL	164360	3690516	DEED DEDICATION	200.00
				VENDOR TOTAL	3,449.68
CINTAS CORPORATION #411	PJS	164354	4179075655	RUG AND MOP SERVICE - ALL BUILDINGS	396.77

**ACCOUNTS PAYABLE LISTING
FOR TOWN BOARD APPROVAL
JANUARY 2024**

VENDOR NAME	APPV BY	VOUCHER NO	INV #	DESCRIPTION	AMOUNT
				VENDOR TOTAL	396.77
COLLIERS ENGINEERING & DESIGN	BWL	164442	0000913716	ZONING CODE UPDATE	1,495.00
				VENDOR TOTAL	1,495.00
COLONY HARDWARE CORP.	PJS	164416	C11601	FIRST AID SUPPLIES	10.63
	JRH	164341	INV-1971508	FIRST AID SUPPLIES FOR REC	270.93
				VENDOR TOTAL	281.56
COOK BROTHERS TRUCK PARTS	PJS	164409	2024454	PRESSURE PROTECTION VALVE	99.94
				VENDOR TOTAL	99.94
COPPOLA	JRH	164432	012024COPPOLA	2024 JANUARY INSTRUCTOR PAYMENT	1,508.43
				VENDOR TOTAL	1,508.43
CREIGHTON SELF-DEFENSE INC	JRH	164436	012024CREIGHTON	2024 JANUARY INSTRUCTOR PAYMENT	3,457.59
				VENDOR TOTAL	3,457.59
CROSSROADS HIGHWAY SUPPLY	PJS	164470	24455	DILENATORS	765.00
				VENDOR TOTAL	765.00
CROWN CASTLE INTERNATIONAL CORP.	AMM	164352	1487034	FIBER SERVICE #S269684 - 170 W. JEFFERSO	968.52
				VENDOR TOTAL	968.52
D.J.M. EQUIPMENT, INC. BOBCAT OF THE FINGER LAKE	PJS	164421	01-202799	FILTER AND OIL BOBCAT	60.81

**ACCOUNTS PAYABLE LISTING
FOR TOWN BOARD APPROVAL
JANUARY 2024**

VENDOR NAME	APPV BY	VOUCHER NO	INV #	DESCRIPTION	AMOUNT
				VENDOR TOTAL	60.81
DEBBIE SUPPLY INC	PJS	164366	669529	LUG NUT	1.59
				VENDOR TOTAL	1.59
DECKMAN OIL COMPANY	PJS	164413	785285	DEF DIESAL	870.87
	PJS	164306	785264	5W-30 OIL	667.14
				VENDOR TOTAL	1,538.01
DEL 3750 MONROE AVENUE ASSOCIATES LLC	BWL	164301	12292023	JANUARY COURT RENT	8,415.87
				VENDOR TOTAL	8,415.87
DEMOCRAT & CHRONICLE	BWL	164454	DC1187406	FEBRUARY NEWSPAPER	35.00
				VENDOR TOTAL	35.00
DIRECT ENERGY BUSINESS	BWL	164483	233620053350290	631 MARSH RD	16.13
	BWL	164483	233620053350288	170 JEFFERSON RD W KINGS BEND	13.83
	BWL	164483	233610053342477	625 MARSH RD	0.29
	BWL	164475	240040053391675	500 MENDON ROAD ELECTRIC	1,081.31
	BWL	164475	240030053382132	37 CANDLEWOOD DR. ELECTRIC	15.07
	BWL	164475	240040053391676	3899 MONROE AVE ELECTRIC	277.56
	BWL	164475	240040053391677	11 S. MAIN ST. ELECTRIC	1,325.32
	BWL	164475	240040053391669	2600 LEHIGH STATION ELECTRIC	95.83
	BWL	164477	240040053390014	STREET LIGHTING TOWN AT LARGE	299.51
	BWL	164477	240040053391674	STREET LIGHTING STONETOWN	64.65
	BWL	164477	240040053391670	STREET LIGHTING 1-2 POLES	227.43
	BWL	164477	240040053391671	STREET LIGHTING 3-6 POLES	243.40
	BWL	164477	240040053391672	STREET LIGHTING 7+ POLES	415.97
	BWL	164477	240040053391673	STREET LIGHTING POLE MAINT.	47.36
	BWL	164505	233590053333148	6 DOWNING DR	4.12
	BWL	164505	233620053350289	529 MARSH RD PUMPS	74.90

**ACCOUNTS PAYABLE LISTING
FOR TOWN BOARD APPROVAL
JANUARY 2024**

VENDOR NAME	APPV BY	VOUCHER NO	INV #	DESCRIPTION	AMOUNT
				VENDOR TOTAL	4,202.68
EDWARDS TREE & LANDSCAPE	PJS	164420	2958	REITZ PKWY TREE	950.00
	PJS	164368	2950-1	27 THRUSH FIELD TREE	600.00
	PJS	164367	2950	REMOVE SPLIT OAK BEHIND 16 WINCHESTER	975.00
	PJS	164370	2950-3	SCC SIDE YARD TREE	700.00
	PJS	164369	2950-2	SCC SILVER MAPLE	1,900.00
				VENDOR TOTAL	5,125.00
ELDERBERRY EXPRESS, INC.	BWL	164443	114	1ST QUARTER 2024 TRANSPORTATION SERVICES	2,000.00
				VENDOR TOTAL	2,000.00
ELDERLEE, INC.	PJS	164441	124569	GUIDE RAILS - REEVES ROAD	1,858.44
				VENDOR TOTAL	1,858.44
EMPIRE TENNIS, LLC	JRH	164437	012024SPEIRS	2024 JANUARY INSTRUCTOR PAYMENT	267.75
				VENDOR TOTAL	267.75
ENVIRONMENTAL PRODUCTS & ACCESSORIES, LLC	PJS	164382	269278	FLUSH TRUCK PARTS	432.42
				VENDOR TOTAL	432.42
EXODUS EXTERMINATING INC	PJS	164394	449059	DEC SERVICE	50.00
				VENDOR TOTAL	50.00
FAIRPORT CHILDREN'S THEATER	JRH	164435	012024ROCHA	2024 JANUARY INSTRUCTOR PAYMENT	1,166.20

**ACCOUNTS PAYABLE LISTING
FOR TOWN BOARD APPROVAL
JANUARY 2024**

VENDOR NAME	APPV BY	VOUCHER NO	INV #	DESCRIPTION	AMOUNT
				VENDOR TOTAL	1,166.20
FINGER LAKES CASTLE	PJS	164456	113401	GLOVES	335.70
				VENDOR TOTAL	335.70
FIVE STAR EQUIPMENT INC	PJS	164400	P76515	WIPER ARM	272.23
				VENDOR TOTAL	272.23
FLEET PRIDE	PJS	164466	112646457	BRAKE SHOE	939.96
	PJS	164387	112511219	BRAKE DRUM	445.96
	PJS	164387	112615760	CREDIT	-215.98
				VENDOR TOTAL	1,169.94
FLOWER CITY COMMUNICATIONS INC	PJS	164448	INV4668	2024 ANNUAL RADIO TRUNKING SERVICES	13,272.00
				VENDOR TOTAL	13,272.00
FORBES COURT REPORTING SERVICES, LLC	BWL	164479	12	DECEMBER 2023 STENOGRAPHERS	480.00
				VENDOR TOTAL	480.00
GENERAL WELDING AND FABRICATION	PJS	164496	35653	3 WAY BRAKE PLUG	47.67
	PJS	164308	35597	BEARINGS & SEALS	73.68
				VENDOR TOTAL	121.35
GRAINGER, INC.	PJS	164427	9956262340	MANOMETER AND APPLIACE DOLLY	715.00
	PJS	164384	9947750155	WELDING CYLINDER HAND TRUCK / ACETYLENE	1,642.69
	PJS	164469	9939195369	CIRCUT 462	58.13

**ACCOUNTS PAYABLE LISTING
FOR TOWN BOARD APPROVAL
JANUARY 2024**

VENDOR NAME	APPV BY	VOUCHER NO	INV #	DESCRIPTION	AMOUNT
				VENDOR TOTAL	2,415.82
GRASSLAND EQUIPMENT AND IRRIGATION CORPORATION	PJS	164361	1355505	BLADES, FILTERS, HYDRAULIC OIL	1,263.68
				VENDOR TOTAL	1,263.68
GREENLIGHT NETWORKS LLC	AMM	164325	2920135	GREENLIGHT: BUSINES BASIC	150.00
				VENDOR TOTAL	150.00
HADLOCK'S ACE HARDWARE	PJS	164379	003262	ELECTRICAL TAPE,ADAPTERS	41.30
				VENDOR TOTAL	41.30
HANSON	JRH	164438	012024HANSON	2024 JANUARY INSTRUCTOR PAYMENT	2,018.96
				VENDOR TOTAL	2,018.96
HAWK COLLISION & FRAME	PJS	164415	3176	INSPECTION	26.00
	PJS	164386	3184	INSPECTIONS	26.00
	PJS	164386	3198	INSPECTIONS	21.00
				VENDOR TOTAL	73.00
HEIDELBERG MATERIALS NORTHEAST NEW YORK LLC	PJS	164374	4420938	MILLINGS	253.69
				VENDOR TOTAL	253.69
HILLYARD, INC.	PJS	164425	605340772	PAPER AND CUSTODIAL	999.19
	PJS	164425	605349942	PAPER AND CUSTODIAL	1,128.99
	PJS	164425	605345104	PAPER AND CUSTODIAL	116.52
	PJS	164425	605347415	PAPER AND CUSTODIAL	116.68

**ACCOUNTS PAYABLE LISTING
FOR TOWN BOARD APPROVAL
JANUARY 2024**

VENDOR NAME	APPV BY	VOUCHER		DESCRIPTION	AMOUNT
		NO	INV #		
				VENDOR TOTAL	2,361.38
HOME DEPOT	PJS	164381	5363661	4 TINE CULTIVATORS	53.96
	PJS	164417	8035887	GAS CANS	95.88
	PJS	164423	8024510	SHOP SUPPLIES	360.62
	PJS	164350	4023759	LUMBER	134.32
	PJS	164350	3363681	LUMBER, SIPHON	127.89
	PJS	164349	5023697	SHOP SUPPLIES, LUMBER	136.38
	PJS	164349	4350745	REFUND OR RETURNED LUMBER	-78.32
	PJS	164375	2190009	CATCH BASIN SUPPLIES	208.71
	PJS	164376	4184287	BATTERIES	415.86
	PJS	164488	7014636	MAILBOXES FUEL FILTERS	221.38
	PJS	164490	8193389	CATCH BASIN SUPPLIES	149.18
	PJS	164494	WG52054032	HOIST FOR RISERS	174.00
	PJS	164501	8035870	TOOLBOX FOR 401	590.80
				VENDOR TOTAL	2,590.66
HUMMEL	BWL	164446	123123	2023 SMALL CLAIMS COST AWARDS	120.00
				VENDOR TOTAL	120.00
INTIVITY, INC.	PJS	164426	1884266-0	ANTIBACTERIAL WIPES	631.20
	PJS	164385	1884405-0	OFFICE SUPPLIES, BACKREST	293.35
	PJS	164385	1884405-1	FOOTREST	62.49
	JRH	164458	1885627-1	RECREATION OFFICE EQUIPMENT	552.88
	JRH	164458	1885627-0	RECREATION OFFICE SUPPLIES	249.38
	JRH	164298	1878461-2	SENIORS OFFICE EQUIPMENT	255.08
				VENDOR TOTAL	2,044.38
IRON MOUNTAIN, INC	RM	164343	JBYY237	RECORD RETENTION-01/01/2024 - 01/31/2024	919.48
				VENDOR TOTAL	919.48

**ACCOUNTS PAYABLE LISTING
FOR TOWN BOARD APPROVAL
JANUARY 2024**

VENDOR NAME	APPV BY	VOUCHER NO	INV #	DESCRIPTION	AMOUNT
JAMES PETERSON II - PETTY CASH	PJS	164410	0269662	MASTER BRAKE CALIPER SET	64.79
	PJS	164410	15410470609	USB MEMORY CARD	21.49
	PJS	164410	00681	POSTAGE STAMPS	13.20
VENDOR TOTAL					99.48
JOE BASIL CHEVROLET, INC.	PJS	164351	FG438	VEHICLE #401-3 - CHEVROLET SILVERADO 350	59,703.00
	VENDOR TOTAL				
JPR SERVICE, INC.	PJS	164353	BDX28716R	2023 LOAD TRAIL DUMP TRAILER VEH. #485-1	12,016.00
	VENDOR TOTAL				
KENWORTH NORTHEAST GROUP, INC	PJS	164467	R67527	NYSI 464/466	437.09
	PJS	164467	R67535	NYSI 464/466	20.00
	PJS	164471	R67373	ENGINE REPAIR 441	1,641.70
	PJS	164472	RI298318	SLACK ADJUSTERS	316.92
	PJS	164491	RI299124	55 GALLON ANTI- FREEZE	420.99
VENDOR TOTAL					2,836.70
KIMBALL - MIDWEST	PJS	164391	101748407	NUTS, BOLTS SIGNS	318.75
	VENDOR TOTAL				
KOVALSKY-CARR ELECTRIC SUPPLY CO., INC.	PJS	164424	S2049206.001	FLAGPOLE SPOTLIGHT	300.00
	PJS	164424	S1990923.004	REFUND FOR LAMPS	-96.72
VENDOR TOTAL					203.28
LANDPRO EQUIPMENT, LLC	PJS	164406	2836281	AIR FILTERS	221.62
	PJS	164406	2836380	AIR FILTERS	120.72
	PJS	164406	2836841	RETURNED AIR FILTERS	-66.79

**ACCOUNTS PAYABLE LISTING
FOR TOWN BOARD APPROVAL
JANUARY 2024**

VENDOR NAME	APPV BY	VOUCHER NO	INV #	DESCRIPTION	AMOUNT
				VENDOR TOTAL	275.55
LEO J. ROTH CORPORATION	PJS	164486	32090	TOWN HALL REPAIR	177.00
				VENDOR TOTAL	177.00
LEWIS GENERAL TIRES, INC.	PJS	164450	828890	TIRES FOR PSD VANS	1,036.20
	PJS	164390	177560	423 TIRES	313.32
				VENDOR TOTAL	1,349.52
LICCIARDI RADIO COMMUNICATIONS, INC.	PJS	164388	41456	RADIO INSTALL	1,561.70
				VENDOR TOTAL	1,561.70
LUCKY'S TRUCK & TRAILER SALES INC	PJS	164461	184652H	STARTER FOR 453	611.49
				VENDOR TOTAL	611.49
M R B GROUP	BWL	164362	53660	PITTSFORD OAKS	102.50
	BWL	164362	52675	COVENTRY RIDGE SECTION 4	820.00
				VENDOR TOTAL	922.50
MCQUILLEN	RM	164342	01032024	2024 TIME WARNER TOWN AND COUNTY TAX PAY	1,950.38
	RM	164449	01102024	2024 TOWN/COUNTY & SEWER DISTRICT BILLS	6,000.59
				VENDOR TOTAL	7,950.97
MCVEAN	JRH	164434	012024MCVEAN	2024 JANUARY INSTRUCTOR PAYMENT	776.16

**ACCOUNTS PAYABLE LISTING
FOR TOWN BOARD APPROVAL
JANUARY 2024**

VENDOR NAME	APPV BY	VOUCHER NO	INV #	DESCRIPTION	AMOUNT
				VENDOR TOTAL	776.16
MITCHELL1	PJS	164468	IB30326121	JANUARY BILLING	410.51
				VENDOR TOTAL	410.51
MOFFETT TURF EQUIPMENT, INC.	PJS	164305	01-383452	VENTRAC MAINTENANCE SUPPLIES	551.51
				VENDOR TOTAL	551.51
MONROE CO ASSOC. OF TOWN CLERKS & TAX RECEIVERS	RM	164345	01042024	2024 MONROE COUNTY TOWN CLERKS, TAX RECE	100.00
				VENDOR TOTAL	100.00
MONROE CO FIRE MARSHALS & INSPECTORS	PJS	164373	24021	2024 MEMBER DUES - MCFMIA & NYSBOC	45.00
				VENDOR TOTAL	45.00
MONROE COUNTY ASSESSORS' ASSOCIATION	BWL	164340	01032024	2024 MEMBERSHIP MONROE COUNTY ASSESSORS	65.00
				VENDOR TOTAL	65.00
MONROE COUNTY WATER	BWL	164500	90526	WATER - ALL YR ROUND FACILITIES	24.31
	BWL	164503	391992	TOWN OF PITTSFORD LIBRARY	103.13
	BWL	164503	390513	PITTS HGWY GARAGE	103.13
	BWL	164503	390456	TOWN OF PITTSFORD SCC	103.13
	BWL	164503	390376	40 EAST STREET PARKS	103.13
	BWL	164503	391802	TOWN OF PITTSFORD DPW	165.01
				VENDOR TOTAL	601.84
MUTUAL OF OMAHA THE MAXON COMPANY	BWL	164451	GMNY6X007O51-0001	4TH QUARTER 2023 DBL	2,164.80

**ACCOUNTS PAYABLE LISTING
FOR TOWN BOARD APPROVAL
JANUARY 2024**

VENDOR NAME	APPV BY	VOUCHER NO	INV #	DESCRIPTION	AMOUNT
				VENDOR TOTAL	2,164.80
NEW YORK MARKING DEVICES CORP.	RM	164346	102363	NAME PLATES FOR NAVEENAAR HAVANNAVAR, JE	61.25
				VENDOR TOTAL	61.25
NEWMAN TRAFFIC SIGNS	PJS	164473	TRFINV051603	SIGN BLANKS	568.27
				VENDOR TOTAL	568.27
NOCO ENERGY CORP.	PJS	164412	SP12719299	400.1	1,146.25
	PJS	164412	SP12726594	421.8	1,175.31
	PJS	164412	SP12723778	163.8	456.41
	PJS	164412	SP12721500	223.7	640.87
	PJS	164412	SP12715866	350 GAL	1,120.01
	PJS	164497	SP12730396	97. GAL	280.42
	PJS	164497	SP12729395	120.2 GAL	347.48
				VENDOR TOTAL	5,166.75
NORTHERN STAR MEDICAL HEALTH, PLLC	BWL	164329	8875	DRUG SCREENINGS	710.00
				VENDOR TOTAL	710.00
NORTHERN SUPPLY INC	PJS	164393	121181-1	POST FOR SNOW FENCE	900.00
				VENDOR TOTAL	900.00
NY GOVERNMENT FINANCE OFFICERS ASSOCIATION	BWL	164440	INV_46463	2024 ASSOCIATION DUES	190.00
				VENDOR TOTAL	190.00
NYS ASSESSOR'S ASSOCIATION	BWL	164339	01032024	2024 MEMBERSHIP NYS ASSESSORS' ASSOCIATI	200.00

**ACCOUNTS PAYABLE LISTING
FOR TOWN BOARD APPROVAL
JANUARY 2024**

VENDOR NAME	APPV BY	VOUCHER NO	INV #	DESCRIPTION	AMOUNT
				VENDOR TOTAL	200.00
NYS UNEMPLOYMENT INSURANCE	BWL	164444	04-60591 7	UNEMPLOYMENT 4TH QTR 2023	267.15
				VENDOR TOTAL	267.15
OECHSLE	BWL	164363	01032024	REPTILE SHOW FOR AFTER SCHOOL PROGRAM	175.00
				VENDOR TOTAL	175.00
OIL FILTER SERVICE, INC.	PJS	164464	64724	GREASE GUN PARTS	30.78
	PJS	164371	64751	FILTERS FOR ROLLER 315	148.07
	PJS	164371	64805	REFUND FOR FILTERS AND OIL	-144.13
	PJS	164371	64806	FOLDABLE FUNNELS	98.75
	PJS	164398	64583	SIDEWALK PLOWS FILTERS	164.39
	PJS	164307	64574	OIL FILTER	14.27
				VENDOR TOTAL	312.13
PAYCHEX, INC.	BWL	164447	4512168	ONBOARDING MONTHLY SERVICES	100.00
				VENDOR TOTAL	100.00
PERINTON RV RENTALS INC.	PJS	164309	WR1044	SEALS	152.15
				VENDOR TOTAL	152.15
PIPITONE ENTERPRISES, LLC	PJS	164504	18179	BOILER THERMOMETERS - PCC	995.00
				VENDOR TOTAL	995.00
PITTSFORD CENTRAL SCHOOLS	PJS	164482	3374-24A	DPW MONTHLY FUEL CHARGES	688.64
	PJS	164489	3373-245A	MONTHLY PARKS FUEL USAGE	858.36

**ACCOUNTS PAYABLE LISTING
FOR TOWN BOARD APPROVAL
JANUARY 2024**

VENDOR NAME	APPV BY	VOUCHER NO	INV #	DESCRIPTION	AMOUNT
				VENDOR TOTAL	1,547.00
PITTSFORD CHAMBER OF COMMERCE	BWL	164317	11302023	SPONSORSHIP FOR CANDLELIGHT NIGHT	500.00
				VENDOR TOTAL	500.00
PITTSFORD YOUTH SERVICES INCORPORATED	BWL	164358	4641	COUNSELING SERVICES JANUARY 2024	5,665.00
				VENDOR TOTAL	5,665.00
PLUG & PAY TECHNOLOGIES	BWL	164344	2024010200384330007	PITTS REC	15.00
	BWL	164344	2024010200384330008	PITTS WEB	15.00
				VENDOR TOTAL	30.00
PMG PIZZA LLC	JRH	164459	01042024SALVATORES	SENIORS MOVIE PIZZA	45.95
				VENDOR TOTAL	45.95
RAY KERHAERT'S TOWING,INC	PJS	164377	030904	TOW 456	350.00
				VENDOR TOTAL	350.00
REGIONAL INTERNATIONAL CORPORATION	PJS	164378	011221127P	CREDIT	-266.00
	PJS	164378	011222092P	PARTS #456 PAN KIT	1,211.58
	PJS	164378	011222435P	PARTS #456 PAN KIT	922.85
	PJS	164502	011222859P	FUEL PUMP 437	1,217.25
	PJS	164502	011223008P	CREDIT	-945.58
	PJS	164502	011223007P	CREDIT	-266.00
				VENDOR TOTAL	1,874.10
ROBINSON	VM	164296	12282023	TERRA - NOTARY REIMBURSEMENT 2023 (EXAM	75.00

**ACCOUNTS PAYABLE LISTING
FOR TOWN BOARD APPROVAL
JANUARY 2024**

VENDOR NAME	APPV BY	VOUCHER NO	INV #	DESCRIPTION	AMOUNT
				VENDOR TOTAL	75.00
ROCHESTER FENCING CLUB	JRH	164439	012024ROCFENCING	2024 JANUARY INSTRUCTOR PAYMENT	54.60
				VENDOR TOTAL	54.60
ROCHESTER GAS & ELECTRIC	BWL	164499	11411244928	295 FAIRPORT RD PUMP STATION	25.91
	BWL	164484	12611033138	631 MARSH RD PARK	266.92
	BWL	164484	12811020290	5 BARKER RD PARK	168.43
				VENDOR TOTAL	461.26
ROCHESTER PAINT CENTERS	PJS	164404	00155146	SPRAYER TIPS	58.95
				VENDOR TOTAL	58.95
S & S WORLDWIDE, INC	JRH	164337	IN101318199	PANTHER PALS CRAFT SUPPLIES	258.83
	JRH	164338	IN101319324	BREAK CAMP CRAFT SUPPLIES	108.48
				VENDOR TOTAL	367.31
SAXBY IMPLEMENT CORP.	PJS	164422	483	HEDGETRIMMER BOLTS	13.59
				VENDOR TOTAL	13.59
SESAC	JRH	164336	143791	2024 MUSIC LICENSE	1,159.00
				VENDOR TOTAL	1,159.00
SOCOLA	JRH	164430	012024SOCOLA	2024 JANUARY INSTRUCTOR PAYMENT	315.00

**ACCOUNTS PAYABLE LISTING
FOR TOWN BOARD APPROVAL
JANUARY 2024**

VENDOR NAME	APPV BY	VOUCHER NO	INV #	DESCRIPTION	AMOUNT
				VENDOR TOTAL	315.00
SOLVENTS & PETROLEUM SRV	PJS	164365	791459	PARTS WASHER SERVICE	430.55
				VENDOR TOTAL	430.55
STAPLES	RM	164418	8072747311	GENERAL OFFICE SUPPLIES	77.20
				VENDOR TOTAL	77.20
STATE COMPTROLLER	BWL	164323	2636690-2023-11-01	NOVEMBER 2023 TOWN COURT FEES	1,523.50
				VENDOR TOTAL	1,523.50
STOCKMAN-BROADBENT	JRH	164356	012024STOCKMAN	PANTHER PALS MUSICAL ENTERTAINMENT 1/3/2	300.00
				VENDOR TOTAL	300.00
STREET SKILLS, LLC	JRH	164429	012024DELVECCHIO	2024 JANUARY INSTRUCTOR PAYMENT	35.00
				VENDOR TOTAL	35.00
THE DUKE COMPANY	PJS	164414	001565803	PLOW STAKES	190.50
				VENDOR TOTAL	190.50
THRU-WAY SPRING, INC	PJS	164498	191143	BACKRACK 401	572.83
	PJS	164498	191253	BACKRACK 401	88.90
				VENDOR TOTAL	661.73
TOPS MARKETS LLC	JRH	164355	122023TOPSMARKETS	2023 DECEMBER SENIORS BILLING	11.87

**ACCOUNTS PAYABLE LISTING
FOR TOWN BOARD APPROVAL
JANUARY 2024**

VENDOR NAME	APPV BY	VOUCHER NO	INV #	DESCRIPTION	AMOUNT
				VENDOR TOTAL	11.87
TOSHIBA BUSINESS SOLUTIONS	BWL	164411	5910161	COPIER INVOICES	151.91
	BWL	164411	5932839	COPIER INVOICES	208.12
	BWL	164411	6187477	COPIER INVOICES	243.57
	BWL	164411	5910128	COPIER INVOICES	234.00
	PJS	164405	6190609	TOSHIBA MONTHLY COPIER MAINT - PSD DEC	18.74
	AMM	164333	6183152	MANAGED PRINT SERVICES-NETWORKED PRINTER	168.05
	AMM	164419	6185728	DOCUWARE-SOLUTIONS SOFTWARE SUPPORT 1/1/	1,000.00
	BWL	164359	6186811	DECEMBER 2023 CLERK'S COPIER	180.66
	PJS	164493	6190746	DEC BILLING	22.34
				VENDOR TOTAL	2,227.39
UDIG NY	BWL	164480	23120688	AFTER HOURS EMERGENCY STAKE OUT REQUESTS	74.00
				VENDOR TOTAL	74.00
URMC DEPARTMENT OF PSYCHIATRY	BWL	164322	TOP0124	EAP SERVICES JANUARY 2024	210.83
				VENDOR TOTAL	210.83
VICTOR POWER EQUIPMENT	PJS	164297	317181	SPARK PLUGS	199.95
	PJS	164460	317099	BACKPACK BLOWER	114.95
				VENDOR TOTAL	314.90
VILLAGE OF PITTSFORD	BWL	164324	2636690-2023-11-01	NOVEMBER 2023 TOWN COURT FEES	150.00
				VENDOR TOTAL	150.00
VP SUPPLY CORP.	PJS	164428	5535291	BULBS AND THERMOSTATS	261.38

**ACCOUNTS PAYABLE LISTING
FOR TOWN BOARD APPROVAL
JANUARY 2024**

VENDOR NAME	APPV BY	VOUCHER NO	INV #	DESCRIPTION	AMOUNT
				VENDOR TOTAL	261.38
W. B. MASON CO., INC.	RM	164407	243276995	GENERAL OFFICE SUPPLIES	260.10
	RM	164407	243488789	GENERAL OFFICE SUPPLIES	118.69
				VENDOR TOTAL	378.79
WARD	BWL	164478	122823	COURIER MILEAGE REIMBURSEMENT	25.94
				VENDOR TOTAL	25.94
WEGMANS FOOD MARKETS INC	JRH	164463	122023WEGMANSREC	2023 DECEMBER WEGMANS REC BILLING	668.92
	BWL	164357	01032024	RETIREMENT CAKE MEL DAVISON	66.00
				VENDOR TOTAL	734.92
WERNER	JRH	164433	012024WERNER	2024 JANUARY INSTRUCTOR PAYMENT	415.80
				VENDOR TOTAL	415.80
				REPORT TOTAL	226,509.96

END OF REPORT

**PREPAID ACCOUNTS PAYABLE LISTING
FOR TOWN BOARD APPROVAL
JANUARY 2024**

VENDOR NAME	APPV BY	VOUCHER NO	INV #	DESCRIPTION	AMOUNT
AETNA INC.	BWL	164315	60864446	JANUARY 2024 HEALTH BILL	17,181.46
				VENDOR TOTAL	17,181.46
CHARTER COMMUNICATIONS	AMM	164318	142206901122123	FIBER INTERNET 50MBPS & 5 STATIC IPS - 1	540.00
	AMM	164321	141705201121423	BUSINESS CLASS DIGITAL ADAPTERS 12/17/23	49.34
				VENDOR TOTAL	589.34
CLIX PORTRAIT STUDIOS	BWL	164327	10155248	BUSINESS HEAD SHOTS JENNIFER MORROW	95.95
				VENDOR TOTAL	95.95
DIRECT ENERGY BUSINESS	PJS	164310	233480053248640	ELECTRIC - REITZ PARKWAY PS	121.59
	PJS	164311	233480053248641	DIRECT ENGERGY ELECTRIC - THORNELL FARM	791.66
				VENDOR TOTAL	913.25
EXCELLUS	BWL	164302	000037524070	0002	67.06
	BWL	164302	000037523822	0003	47.90
	BWL	164302	000037524829	0004	23.95
	BWL	164302	000037524285	0005	23.95
	BWL	164302	000037523948	0001	57.48
	BWL	164302	000037524166	0006	47.90
	BWL	164302	000037524521	0007	62.27
	BWL	164302	000037524537	0008	62.27
	BWL	164302	000037524289	0009	4.79
	BWL	164302	000037524298	0010	71.85
	BWL	164302	000037524588	0011	14.37
	BWL	164302	000037524673	0012	301.77
	BWL	164302	000037523959	0013	86.22
	BWL	164302	000037523715	0014	9.58
				VENDOR TOTAL	881.36
FIDELITY SECURITY LIFE COMPANY OF NY	BWL	164330	166104280	EYEMED VISION PREMIUM JANUARY 2024	492.08

**PREPAID ACCOUNTS PAYABLE LISTING
FOR TOWN BOARD APPROVAL
JANUARY 2024**

VENDOR NAME	APPV BY	VOUCHER NO	INV #	DESCRIPTION	AMOUNT
				VENDOR TOTAL	492.08
FRONTIER COMMUNICATIONS	PJS	164313	DPWFAX122223	DPW - FAX	64.85
	PJS	164314	HWYFIREALARM122223	HWY FIRE ALARM	64.64
	AMM	164319	1/2-6431-052517-6	IT DEPT EMERGENCY PHONE SERVICE 12/22/23	64.92
	AMM	164326	0101/6430-092614-6	6430 KBP NORTH PHONE SERVICE 01/01/24 -	76.36
	BWL	164331	585-100-2618-050219-6	MONTHLY PHONE PYMT	1,250.74
	BWL	164334	012024SRS	SENIORS TELEPHONE SERVICE 12/22/23-01/21	64.79
	BWL	164335	012024REC	RECREATION TELEPHONE SERVICES 12/22/23-0	65.70
				VENDOR TOTAL	1,652.00
MUTUAL OF OMAHA	BWL	164304	001624677708	LIFE & DISABILITY INSURANCE PREMIUM JANU	3,395.99
				VENDOR TOTAL	3,395.99
MVP HEALTH CARE	BWL	164347	000000019025610	MONTHLY HEALTH CARE BILL JANUARY 2024	203,267.78
				VENDOR TOTAL	203,267.78
PAYCHEX, INC.	BWL	164299	2023122800	PAYROLL PROCESSING DECEMBER 2023	5,562.45
				VENDOR TOTAL	5,562.45
PERMA	BWL	164312	20240304	2024 WORKERS COMP INS. PREMIUM	266,224.00
				VENDOR TOTAL	266,224.00
				REPORT TOTAL	500,255.66

END OF REPORT

TOWN OF PITTSFORD

Expense Control Report

Fiscal Year: 2024 Period From: 1 To: 12

		Curr. Month Total Expended	Original Budget	YTD Adjusted Budget	YTD Actual Expended	YTD Unexpended Balance	YTD Encumbered	YTD Available Balance	Percent Exp. Balance
Fund 0001	GENERAL FUND								
Dept 1010	TOWN BOARD								
0001	PERSONAL SERVICES	3,926.92	102,100.00	102,100.00	3,926.92	98,173.08	0.00	98,173.08	3.85
0004	CONTRACTUAL & MISC. EXPENSE	0.00	4,000.00	4,000.00	0.00	4,000.00	0.00	4,000.00	0.00
Total Dept 1010	TOWN BOARD	3,926.92	106,100.00	106,100.00	3,926.92	102,173.08	0.00	102,173.08	3.70
Dept 1110	TOWN JUSTICES								
0001	PERSONAL SERVICES	3,381.78	251,484.00	251,484.00	3,381.78	248,102.22	0.00	248,102.22	1.34
0002	EQUIPMENT & CAPITAL OUTLAY	0.00	500.00	500.00	0.00	500.00	0.00	500.00	0.00
0004	CONTRACTUAL & MISC. EXPENSE	8,452.44	152,730.00	153,093.96	8,452.44	144,641.52	363.96	144,277.56	5.52
Total Dept 1110	TOWN JUSTICES	11,834.22	404,714.00	405,077.96	11,834.22	393,243.74	363.96	392,879.78	2.92
Dept 1220	TOWN SUPERVISOR								
0001	PERSONAL SERVICES	5,252.27	196,879.00	196,879.00	5,252.27	191,626.73	0.00	191,626.73	2.67
0002	EQUIPMENT & CAPITAL OUTLAY	0.00	500.00	500.00	0.00	500.00	0.00	500.00	0.00
0004	CONTRACTUAL & MISC. EXPENSE	82.81	6,950.00	6,985.60	82.81	6,902.79	0.00	6,902.79	1.19
Total Dept 1220	TOWN SUPERVISOR	5,335.08	204,329.00	204,364.60	5,335.08	199,029.52	0.00	199,029.52	2.61
Dept 1230	COMMUNITY SERVICE								
0001	PERSONAL SERVICES	0.00	111,079.00	111,079.00	0.00	111,079.00	0.00	111,079.00	0.00
0002	EQUIPMENT & CAPITAL OUTLAY	0.00	500.00	500.00	0.00	500.00	0.00	500.00	0.00
0004	CONTRACTUAL & MISC. EXPENSE	0.00	21,000.00	21,000.00	0.00	21,000.00	0.00	21,000.00	0.00
Total Dept 1230	COMMUNITY SERVICE	0.00	132,579.00	132,579.00	0.00	132,579.00	0.00	132,579.00	0.00
Dept 1310	DIRECTOR OF FINANCE								
0001	PERSONAL SERVICES	0.00	120,600.00	120,600.00	0.00	120,600.00	0.00	120,600.00	0.00
0002	EQUIPMENT & CAPITAL OUTLAY	0.00	1,000.00	1,000.00	0.00	1,000.00	0.00	1,000.00	0.00
0004	CONTRACTUAL & MISC. EXPENSE	196.15	5,550.00	5,550.00	196.15	5,353.85	0.00	5,353.85	3.53
Total Dept 1310	DIRECTOR OF FINANCE	196.15	127,150.00	127,150.00	196.15	126,953.85	0.00	126,953.85	0.15
Dept 1320	INDEPENDENT AUDIT								
0004	CONTRACTUAL & MISC. EXPENSE	0.00	55,000.00	55,000.00	0.00	55,000.00	0.00	55,000.00	0.00
Total Dept 1320	INDEPENDENT AUDIT	0.00	55,000.00	55,000.00	0.00	55,000.00	0.00	55,000.00	0.00
Dept 1330	TAX COLLECTION								
0001	PERSONAL SERVICES	0.00	51,000.00	51,000.00	0.00	51,000.00	0.00	51,000.00	0.00
0004	CONTRACTUAL & MISC. EXPENSE	18.19	6,500.00	6,500.00	18.19	6,481.81	62.75	6,419.06	0.28
Total Dept 1330	TAX COLLECTION	18.19	57,500.00	57,500.00	18.19	57,481.81	62.75	57,419.06	0.03

TOWN OF PITTSFORD

Expense Control Report

Fiscal Year: 2024 Period From: 1 To: 12

		Curr. Month Total Expended	Original Budget	YTD Adjusted Budget	YTD Actual Expended	YTD Unexpended Balance	YTD Encumbered	YTD Available Balance	Percent Exp. Balance
Fund 0001	GENERAL FUND								
Dept 1355	ASSESSOR								
0001	PERSONAL SERVICES	0.00	196,311.00	196,311.00	0.00	196,311.00	0.00	196,311.00	0.00
0002	EQUIPMENT & CAPITAL OUTLAY	0.00	500.00	1,500.00	0.00	1,500.00	1,000.00	500.00	0.00
0004	CONTRACTUAL & MISC. EXPENSE	350.34	19,535.00	19,559.55	350.34	19,209.21	0.00	19,209.21	1.79
Total Dept 1355	ASSESSOR	350.34	216,346.00	217,370.55	350.34	217,020.21	1,000.00	216,020.21	0.16
Dept 1375	CREDIT CARD FEES								
0004	CONTRACTUAL & MISC. EXPENSE	0.00	38,000.00	38,000.00	0.00	38,000.00	0.00	38,000.00	0.00
Total Dept 1375	CREDIT CARD FEES	0.00	38,000.00	38,000.00	0.00	38,000.00	0.00	38,000.00	0.00
Dept 1410	TOWN CLERK								
0001	PERSONAL SERVICES	0.00	200,000.00	200,000.00	0.00	200,000.00	0.00	200,000.00	0.00
0002	EQUIPMENT & CAPITAL OUTLAY	0.00	1,000.00	1,000.00	0.00	1,000.00	0.00	1,000.00	0.00
0004	CONTRACTUAL & MISC. EXPENSE	149.30	11,900.00	12,852.85	149.30	12,703.55	937.25	11,766.30	1.16
Total Dept 1410	TOWN CLERK	149.30	212,900.00	213,852.85	149.30	213,703.55	937.25	212,766.30	0.07
Dept 1420	ATTORNEY								
0001	PERSONAL SERVICES	1,892.47	51,173.00	51,173.00	1,892.47	49,280.53	0.00	49,280.53	3.70
0002	EQUIPMENT & CAPITAL OUTLAY	0.00	250.00	250.00	0.00	250.00	0.00	250.00	0.00
0004	CONTRACTUAL & MISC. EXPENSE	6.06	21,375.00	23,657.00	6.06	23,650.94	2,282.00	21,368.94	0.03
Total Dept 1420	ATTORNEY	1,898.53	72,798.00	75,080.00	1,898.53	73,181.47	2,282.00	70,899.47	2.53
Dept 1430	PERSONNEL								
0001	PERSONAL SERVICES	0.00	84,864.00	84,864.00	0.00	84,864.00	0.00	84,864.00	0.00
0002	EQUIPMENT & CAPITAL OUTLAY	0.00	1,000.00	1,000.00	0.00	1,000.00	0.00	1,000.00	0.00
0004	CONTRACTUAL & MISC. EXPENSE	143.41	145,200.00	145,315.42	143.41	145,172.01	79.70	145,092.31	0.10
Total Dept 1430	PERSONNEL	143.41	231,064.00	231,179.42	143.41	231,036.01	79.70	230,956.31	0.06
Dept 1440	ENGINEERING								
0004	CONTRACTUAL & MISC. EXPENSE	0.00	25,000.00	25,000.00	0.00	25,000.00	0.00	25,000.00	0.00
Total Dept 1440	ENGINEERING	0.00	25,000.00	25,000.00	0.00	25,000.00	0.00	25,000.00	0.00
Dept 1450	ELECTIONS								
0004	CONTRACTUAL & MISC. EXPENSE	0.00	500.00	500.00	0.00	500.00	0.00	500.00	0.00
Total Dept 1450	ELECTIONS	0.00	500.00	500.00	0.00	500.00	0.00	500.00	0.00
Dept 1460	RECORDS MANAGEMENT								
0004	CONTRACTUAL & MISC.	0.00	1,000.00	1,000.00	0.00	1,000.00	0.00	1,000.00	0.00

TOWN OF PITTSFORD

Expense Control Report

Fiscal Year: 2024 Period From: 1 To: 12

		Curr. Month Total Expended	Original Budget	YTD Adjusted Budget	YTD Actual Expended	YTD Unexpended Balance	YTD Encumbered	YTD Available Balance	Percent Exp. Balance
Fund 0001	GENERAL FUND								
Dept 1460	RECORDS MANAGEMENT EXPENSE								
Total Dept 1460	RECORDS MANAGEMENT	0.00	1,000.00	1,000.00	0.00	1,000.00	0.00	1,000.00	0.00
Dept 1490	PUBLIC WORKS								
0001	PERSONAL SERVICES	0.00	257,200.00	257,200.00	0.00	257,200.00	0.00	257,200.00	0.00
0002	EQUIPMENT & CAPITAL OUTLAY	0.00	1,000.00	1,000.00	0.00	1,000.00	0.00	1,000.00	0.00
0004	CONTRACTUAL & MISC. EXPENSE	327.93	19,770.00	19,888.69	327.93	19,560.76	1,200.00	18,360.76	1.65
Total Dept 1490	PUBLIC WORKS	327.93	277,970.00	278,088.69	327.93	277,760.76	1,200.00	276,560.76	0.12
Dept 1620	BUILDING								
0001	PERSONAL SERVICES	0.00	5,200.00	5,200.00	0.00	5,200.00	0.00	5,200.00	0.00
0004	CONTRACTUAL & MISC. EXPENSE	1,287.80	313,615.00	313,959.83	1,287.80	312,672.03	141.79	312,530.24	0.41
Total Dept 1620	BUILDING	1,287.80	318,815.00	319,159.83	1,287.80	317,872.03	141.79	317,730.24	0.40
Dept 1670	CENTRAL MAILING								
0004	CONTRACTUAL & MISC. EXPENSE	0.00	65,000.00	65,000.00	0.00	65,000.00	0.00	65,000.00	0.00
Total Dept 1670	CENTRAL MAILING	0.00	65,000.00	65,000.00	0.00	65,000.00	0.00	65,000.00	0.00
Dept 1680	DATA PROCESSING								
0001	PERSONAL SERVICES	0.00	243,000.00	243,000.00	0.00	243,000.00	0.00	243,000.00	0.00
0002	EQUIPMENT & CAPITAL OUTLAY	458.06	2,500.00	2,958.06	458.06	2,500.00	166.92	2,333.08	15.49
0004	CONTRACTUAL & MISC. EXPENSE	8,146.22	162,615.00	201,364.75	8,146.22	193,218.53	38,977.59	154,240.94	4.05
Total Dept 1680	DATA PROCESSING	8,604.28	408,115.00	447,322.81	8,604.28	438,718.53	39,144.51	399,574.02	1.92
Dept 1910	UNALLOCATED INSURANCE								
0004	CONTRACTUAL & MISC. EXPENSE	0.00	264,000.00	264,000.00	0.00	264,000.00	0.00	264,000.00	0.00
Total Dept 1910	UNALLOCATED INSURANCE	0.00	264,000.00	264,000.00	0.00	264,000.00	0.00	264,000.00	0.00
Dept 1920	MUNICIPAL ASSOCIATION DUES								
0004	CONTRACTUAL & MISC. EXPENSE	1,650.00	1,900.00	1,900.00	1,650.00	250.00	0.00	250.00	86.84
Total Dept 1920	MUNICIPAL ASSOCIATION DUES	1,650.00	1,900.00	1,900.00	1,650.00	250.00	0.00	250.00	86.84
Dept 1930	JUDGEMENTS/CLAIMS								
0004	CONTRACTUAL & MISC. EXPENSE	0.00	6,000.00	6,000.00	0.00	6,000.00	0.00	6,000.00	0.00
Total Dept 1930	JUDGEMENTS/CLAIMS	0.00	6,000.00	6,000.00	0.00	6,000.00	0.00	6,000.00	0.00
Dept 1950	PROPERTY TAX								
0004	CONTRACTUAL & MISC.	7,886.95	8,500.00	8,500.00	7,886.95	613.05	0.00	613.05	92.79

TOWN OF PITTSFORD

Expense Control Report

Fiscal Year: 2024 Period From: 1 To: 12

		Curr. Month Total Expended	Original Budget	YTD Adjusted Budget	YTD Actual Expended	YTD Unexpended Balance	YTD Encumbered	YTD Available Balance	Percent Exp. Balance
Fund 0001	GENERAL FUND								
Dept 1950	PROPERTY TAX EXPENSE								
Total Dept 1950	PROPERTY TAX	7,886.95	8,500.00	8,500.00	7,886.95	613.05	0.00	613.05	92.79
Dept 1989	UNCLASSIFIED								
0002	EQUIPMENT & CAPITAL OUTLAY	0.00	101,250.00	274,168.23	0.00	274,168.23	172,918.23	101,250.00	0.00
Total Dept 1989	UNCLASSIFIED	0.00	101,250.00	274,168.23	0.00	274,168.23	172,918.23	101,250.00	0.00
Dept 1990	CONTINGENCY								
0004	CONTRACTUAL & MISC. EXPENSE	0.00	150,000.00	150,000.00	0.00	150,000.00	0.00	150,000.00	0.00
Total Dept 1990	CONTINGENCY	0.00	150,000.00	150,000.00	0.00	150,000.00	0.00	150,000.00	0.00
Dept 2620	CUSTODIAL								
0001	PERSONAL SERVICES	0.00	479,000.00	479,000.00	0.00	479,000.00	0.00	479,000.00	0.00
0002	EQUIPMENT & CAPITAL OUTLAY	0.00	4,600.00	19,527.00	0.00	19,527.00	15,327.00	4,200.00	0.00
0004	CONTRACTUAL & MISC. EXPENSE	7,415.74	197,379.00	219,322.91	7,415.74	211,907.17	31,223.45	180,683.72	3.38
Total Dept 2620	CUSTODIAL	7,415.74	680,979.00	717,849.91	7,415.74	710,434.17	46,550.45	663,883.72	1.03
Dept 3120	CROSSING GUARDS								
0001	PERSONAL SERVICES	0.00	193,000.00	193,000.00	0.00	193,000.00	0.00	193,000.00	0.00
0004	CONTRACTUAL & MISC. EXPENSE	0.00	1,450.00	1,450.00	0.00	1,450.00	0.00	1,450.00	0.00
Total Dept 3120	CROSSING GUARDS	0.00	194,450.00	194,450.00	0.00	194,450.00	0.00	194,450.00	0.00
Dept 3310	TRAFFIC								
0002	EQUIPMENT & CAPITAL OUTLAY	0.00	9,000.00	9,000.00	0.00	9,000.00	0.00	9,000.00	0.00
0004	CONTRACTUAL & MISC. EXPENSE	945.97	8,000.00	8,996.75	945.97	8,050.78	39.00	8,011.78	10.51
Total Dept 3310	TRAFFIC	945.97	17,000.00	17,996.75	945.97	17,050.78	39.00	17,011.78	5.26
Dept 3510	CONTROL OF ANIMALS								
0001	PERSONAL SERVICES	0.00	66,560.00	66,560.00	0.00	66,560.00	0.00	66,560.00	0.00
0004	CONTRACTUAL & MISC. EXPENSE	6.74	4,960.00	4,960.00	6.74	4,953.26	0.00	4,953.26	0.14
Total Dept 3510	CONTROL OF ANIMALS	6.74	71,520.00	71,520.00	6.74	71,513.26	0.00	71,513.26	0.01
Dept 4210	YOUTH SERVICES								
0004	CONTRACTUAL & MISC. EXPENSE	5,665.00	67,980.00	67,980.00	5,665.00	62,315.00	0.00	62,315.00	8.33
Total Dept 4210	YOUTH SERVICES	5,665.00	67,980.00	67,980.00	5,665.00	62,315.00	0.00	62,315.00	8.33
Dept 4560	PHYSICIAN								
0004	CONTRACTUAL & MISC. EXPENSE	0.00	1,400.00	1,400.00	0.00	1,400.00	0.00	1,400.00	0.00

TOWN OF PITTSFORD

Expense Control Report

Fiscal Year: 2024 Period From: 1 To: 12

		Curr. Month Total Expended	Original Budget	YTD Adjusted Budget	YTD Actual Expended	YTD Unexpended Balance	YTD Encumbered	YTD Available Balance	Percent Exp. Balance
Fund 0001	GENERAL FUND								
Dept 4560	PHYSICIAN								
Total Dept 4560	PHYSICIAN	0.00	1,400.00	1,400.00	0.00	1,400.00	0.00	1,400.00	0.00
Dept 5010	SUPERINTENDENT OF HIGHWAYS								
0001	PERSONAL SERVICES	0.00	68,000.00	68,000.00	0.00	68,000.00	0.00	68,000.00	0.00
0002	EQUIPMENT & CAPITAL OUTLAY	0.00	500.00	500.00	0.00	500.00	0.00	500.00	0.00
0004	CONTRACTUAL & MISC. EXPENSE	0.00	1,000.00	1,000.00	0.00	1,000.00	0.00	1,000.00	0.00
Total Dept 5010	SUPERINTENDENT OF HIGHWAYS	0.00	69,500.00	69,500.00	0.00	69,500.00	0.00	69,500.00	0.00
Dept 5132	HIGHWAY GARAGE								
0002	EQUIPMENT & CAPITAL OUTLAY	0.00	26,000.00	35,300.00	0.00	35,300.00	9,300.00	26,000.00	0.00
0004	CONTRACTUAL & MISC. EXPENSE	127.88	56,200.00	56,200.00	127.88	56,072.12	839.00	55,233.12	0.23
Total Dept 5132	HIGHWAY GARAGE	127.88	82,200.00	91,500.00	127.88	91,372.12	10,139.00	81,233.12	0.14
Dept 5182	STREET LIGHTING								
0004	CONTRACTUAL & MISC. EXPENSE	0.00	35,000.00	35,000.00	0.00	35,000.00	0.00	35,000.00	0.00
Total Dept 5182	STREET LIGHTING	0.00	35,000.00	35,000.00	0.00	35,000.00	0.00	35,000.00	0.00
Dept 6410	PUBLICITY								
0001	PERSONAL SERVICES	0.00	112,760.00	112,760.00	0.00	112,760.00	0.00	112,760.00	0.00
0002	EQUIPMENT & CAPITAL OUTLAY	0.00	500.00	500.00	0.00	500.00	0.00	500.00	0.00
0004	CONTRACTUAL & MISC. EXPENSE	6.06	54,785.00	54,785.00	6.06	54,778.94	0.00	54,778.94	0.01
Total Dept 6410	PUBLICITY	6.06	168,045.00	168,045.00	6.06	168,038.94	0.00	168,038.94	0.00
Dept 6510	VETERANS SERVICE								
0004	CONTRACTUAL & MISC. EXPENSE	0.00	300.00	300.00	0.00	300.00	0.00	300.00	0.00
Total Dept 6510	VETERANS SERVICE	0.00	300.00	300.00	0.00	300.00	0.00	300.00	0.00
Dept 6772	PROGRAMS FOR AGING								
0001	PERSONAL SERVICES	0.00	182,325.00	182,325.00	0.00	182,325.00	0.00	182,325.00	0.00
0004	CONTRACTUAL & MISC. EXPENSE	2,146.87	106,640.00	107,548.22	2,146.87	105,401.35	896.35	104,505.00	2.00
Total Dept 6772	PROGRAMS FOR AGING	2,146.87	288,965.00	289,873.22	2,146.87	287,726.35	896.35	286,830.00	0.74
Dept 7020	RECREATION ADMINISTRATION								
0001	PERSONAL SERVICES	0.00	772,227.00	772,227.00	0.00	772,227.00	0.00	772,227.00	0.00
0002	EQUIPMENT & CAPITAL OUTLAY	552.88	5,000.00	5,000.00	552.88	4,447.12	0.00	4,447.12	11.06
0004	CONTRACTUAL & MISC.	13,013.02	439,050.00	442,423.30	13,013.02	429,410.28	1,334.19	428,076.09	2.94

TOWN OF PITTSFORD

Expense Control Report

Fiscal Year: 2024 Period From: 1 To: 12

		Curr. Month Total Expended	Original Budget	YTD Adjusted Budget	YTD Actual Expended	YTD Unexpended Balance	YTD Encumbered	YTD Available Balance	Percent Exp. Balance
Fund 0001	GENERAL FUND								
Dept 9950	TRANSFER TO CAPITAL PROJECTS								
0009	INTERFUND TRANSFERS	0.00	100,000.00	100,000.00	0.00	100,000.00	0.00	100,000.00	0.00
Total Dept 9950	TRANSFER TO CAPITAL PROJECTS	0.00	100,000.00	100,000.00	0.00	100,000.00	0.00	100,000.00	0.00
Total Fund 0001	GENERAL FUND	233,922.19	11,550,629.00	11,873,052.37	233,922.19	11,639,130.18	345,931.02	11,293,199.16	1.97

TOWN OF PITTSFORD

Expense Control Report

Fiscal Year: 2024 Period From: 1 To: 12

		Curr. Month Total Expended	Original Budget	YTD Adjusted Budget	YTD Actual Expended	YTD Unexpended Balance	YTD Encumbered	YTD Available Balance	Percent Exp. Balance
Fund 0002	PART TOWN FUND								
Dept 9040	WORKERS COMPENSATION								
0008	EMPLOYEE BENEFITS	14,687.62	21,000.00	21,000.00	14,687.62	6,312.38	0.00	6,312.38	69.94
Total Dept 9040	WORKERS COMPENSATION	14,687.62	21,000.00	21,000.00	14,687.62	6,312.38	0.00	6,312.38	69.94
Dept 9045	LIFE INSURANCE								
0008	EMPLOYEE BENEFITS	29.45	500.00	500.00	29.45	470.55	0.00	470.55	5.89
Total Dept 9045	LIFE INSURANCE	29.45	500.00	500.00	29.45	470.55	0.00	470.55	5.89
Dept 9050	UNEMPLOYMENT INSURANCE								
0008	EMPLOYEE BENEFITS	0.00	1,000.00	1,000.00	0.00	1,000.00	0.00	1,000.00	0.00
Total Dept 9050	UNEMPLOYMENT INSURANCE	0.00	1,000.00	1,000.00	0.00	1,000.00	0.00	1,000.00	0.00
Dept 9055	DISABILITY INSURANCE								
0008	EMPLOYEE BENEFITS	69.98	1,600.00	1,600.00	69.98	1,530.02	0.00	1,530.02	4.37
Total Dept 9055	DISABILITY INSURANCE	69.98	1,600.00	1,600.00	69.98	1,530.02	0.00	1,530.02	4.37
Dept 9060	HOSPITALIZATION								
0008	EMPLOYEE BENEFITS	17,373.80	213,000.00	213,000.00	17,373.80	195,626.20	0.00	195,626.20	8.16
Total Dept 9060	HOSPITALIZATION	17,373.80	213,000.00	213,000.00	17,373.80	195,626.20	0.00	195,626.20	8.16
Dept 9089	MISC. EMPLOYEE BENEFITS								
0008	EMPLOYEE BENEFITS	0.00	100.00	100.00	0.00	100.00	0.00	100.00	0.00
Total Dept 9089	MISC. EMPLOYEE BENEFITS	0.00	100.00	100.00	0.00	100.00	0.00	100.00	0.00
Total Fund 0002	PART TOWN FUND	36,932.09	1,692,108.00	1,862,872.48	36,932.09	1,825,940.39	169,351.23	1,656,589.16	1.98

TOWN OF PITTSFORD

Expense Control Report

Fiscal Year: 2024 Period From: 1 To: 12

		Curr. Month Total Expended	Original Budget	YTD Adjusted Budget	YTD Actual Expended	YTD Unexpended Balance	YTD Encumbered	YTD Available Balance	Percent Exp. Balance
Fund 0003	LIBRARY FUND								
Dept 4560	PHYSICIAN								
0004	CONTRACTUAL & MISC. EXPENSE	0.00	600.00	600.00	0.00	600.00	0.00	600.00	0.00
Total Dept 4560	PHYSICIAN	0.00	600.00	600.00	0.00	600.00	0.00	600.00	0.00
Dept 7410	LIBRARY								
0001	PERSONAL SERVICES	0.00	993,889.00	993,889.00	0.00	993,889.00	0.00	993,889.00	0.00
0002	EQUIPMENT & CAPITAL OUTLAY	0.00	2,910.00	11,509.50	0.00	11,509.50	8,599.50	2,910.00	0.00
0004	CONTRACTUAL & MISC. EXPENSE	3,705.16	249,991.00	257,104.20	3,705.16	253,399.04	10,283.93	243,115.11	1.44
Total Dept 7410	LIBRARY	3,705.16	1,246,790.00	1,262,502.70	3,705.16	1,258,797.54	18,883.43	1,239,914.11	0.29
Dept 9010	STATE RETIREMENT								
0008	EMPLOYEE BENEFITS	0.00	97,000.00	97,000.00	0.00	97,000.00	0.00	97,000.00	0.00
Total Dept 9010	STATE RETIREMENT	0.00	97,000.00	97,000.00	0.00	97,000.00	0.00	97,000.00	0.00
Dept 9030	SOCIAL SECURITY								
0008	EMPLOYEE BENEFITS	0.00	82,000.00	82,000.00	0.00	82,000.00	0.00	82,000.00	0.00
Total Dept 9030	SOCIAL SECURITY	0.00	82,000.00	82,000.00	0.00	82,000.00	0.00	82,000.00	0.00
Dept 9040	WORKERS COMPENSATION								
0008	EMPLOYEE BENEFITS	5,323.24	9,725.00	9,725.00	5,323.24	4,401.76	0.00	4,401.76	54.74
Total Dept 9040	WORKERS COMPENSATION	5,323.24	9,725.00	9,725.00	5,323.24	4,401.76	0.00	4,401.76	54.74
Dept 9045	LIFE INSURANCE								
0008	EMPLOYEE BENEFITS	34.10	550.00	550.00	34.10	515.90	0.00	515.90	6.20
Total Dept 9045	LIFE INSURANCE	34.10	550.00	550.00	34.10	515.90	0.00	515.90	6.20
Dept 9050	UNEMPLOYMENT INSURANCE								
0008	EMPLOYEE BENEFITS	0.00	1,000.00	1,000.00	0.00	1,000.00	0.00	1,000.00	0.00
Total Dept 9050	UNEMPLOYMENT INSURANCE	0.00	1,000.00	1,000.00	0.00	1,000.00	0.00	1,000.00	0.00
Dept 9055	DISABILITY INSURANCE								
0008	EMPLOYEE BENEFITS	58.51	1,500.00	1,500.00	58.51	1,441.49	0.00	1,441.49	3.90
Total Dept 9055	DISABILITY INSURANCE	58.51	1,500.00	1,500.00	58.51	1,441.49	0.00	1,441.49	3.90
Dept 9060	HOSPITALIZATION								
0008	EMPLOYEE BENEFITS	19,062.74	236,500.00	236,500.00	19,062.74	217,437.26	0.00	217,437.26	8.06
Total Dept 9060	HOSPITALIZATION	19,062.74	236,500.00	236,500.00	19,062.74	217,437.26	0.00	217,437.26	8.06
Dept 9089	MISC. EMPLOYEE BENEFITS								
0008	EMPLOYEE BENEFITS	0.00	300.00	300.00	0.00	300.00	0.00	300.00	0.00
Total Dept 9089	MISC. EMPLOYEE BENEFITS	0.00	300.00	300.00	0.00	300.00	0.00	300.00	0.00
Total Fund 0003	LIBRARY FUND	28,183.75	1,675,965.00	1,691,677.70	28,183.75	1,663,493.95	18,883.43	1,644,610.52	1.67

TOWN OF PITTSFORD

Expense Control Report

Fiscal Year: 2024 Period From: 1 To: 12

		Curr. Month Total Expended	Original Budget	YTD Adjusted Budget	YTD Actual Expended	YTD Unexpended Balance	YTD Encumbered	YTD Available Balance	Percent Exp. Balance
Fund 0004	HIGHWAY WHOLE TOWN FUND								
Dept 1989	UNCLASSIFIED								
0002	EQUIPMENT & CAPITAL OUTLAY	71,719.00	0.00	778,626.79	71,719.00	706,907.79	706,707.79	200.00	9.21
Total Dept 1989	UNCLASSIFIED	71,719.00	0.00	778,626.79	71,719.00	706,907.79	706,707.79	200.00	9.21
Dept 4560	PHYSICIAN								
0004	CONTRACTUAL & MISC. EXPENSE	0.00	1,500.00	1,500.00	0.00	1,500.00	0.00	1,500.00	0.00
Total Dept 4560	PHYSICIAN	0.00	1,500.00	1,500.00	0.00	1,500.00	0.00	1,500.00	0.00
Dept 5130	MACHINERY								
0001	PERSONAL SERVICES	0.00	124,000.00	124,000.00	0.00	124,000.00	0.00	124,000.00	0.00
0002	EQUIPMENT & CAPITAL OUTLAY	732.78	14,500.00	14,820.00	732.78	14,087.22	0.00	14,087.22	4.94
0004	CONTRACTUAL & MISC. EXPENSE	13,379.99	250,700.00	264,287.84	13,379.99	250,907.85	10,484.56	240,423.29	5.06
Total Dept 5130	MACHINERY	14,112.77	389,200.00	403,107.84	14,112.77	388,995.07	10,484.56	378,510.51	3.50
Dept 5140	BRUSH & WEEDS								
0001	PERSONAL SERVICES	0.00	16,000.00	16,000.00	0.00	16,000.00	0.00	16,000.00	0.00
Total Dept 5140	BRUSH & WEEDS	0.00	16,000.00	16,000.00	0.00	16,000.00	0.00	16,000.00	0.00
Dept 5142	SNOW REMOVAL								
0001	PERSONAL SERVICES	0.00	1,041,248.00	1,041,248.00	0.00	1,041,248.00	0.00	1,041,248.00	0.00
0004	CONTRACTUAL & MISC. EXPENSE	14,615.38	526,330.00	555,139.03	14,615.38	540,523.65	30,725.23	509,798.42	2.63
Total Dept 5142	SNOW REMOVAL	14,615.38	1,567,578.00	1,596,387.03	14,615.38	1,581,771.65	30,725.23	1,551,046.42	0.92
Dept 9010	STATE RETIREMENT								
0008	EMPLOYEE BENEFITS	0.00	150,000.00	150,000.00	0.00	150,000.00	0.00	150,000.00	0.00
Total Dept 9010	STATE RETIREMENT	0.00	150,000.00	150,000.00	0.00	150,000.00	0.00	150,000.00	0.00
Dept 9030	SOCIAL SECURITY								
0008	EMPLOYEE BENEFITS	0.00	90,000.00	90,000.00	0.00	90,000.00	0.00	90,000.00	0.00
Total Dept 9030	SOCIAL SECURITY	0.00	90,000.00	90,000.00	0.00	90,000.00	0.00	90,000.00	0.00
Dept 9040	WORKERS COMPENSATION								
0008	EMPLOYEE BENEFITS	32,454.56	65,000.00	65,000.00	32,454.56	32,545.44	0.00	32,545.44	49.93
Total Dept 9040	WORKERS COMPENSATION	32,454.56	65,000.00	65,000.00	32,454.56	32,545.44	0.00	32,545.44	49.93
Dept 9045	LIFE INSURANCE								
0008	EMPLOYEE BENEFITS	55.80	1,000.00	1,000.00	55.80	944.20	0.00	944.20	5.58
Total Dept 9045	LIFE INSURANCE	55.80	1,000.00	1,000.00	55.80	944.20	0.00	944.20	5.58
Dept 9050	UNEMPLOYMENT INSURANCE								
0008	EMPLOYEE BENEFITS	0.00	2,500.00	2,500.00	0.00	2,500.00	0.00	2,500.00	0.00

TOWN OF PITTSFORD

Expense Control Report

Fiscal Year: 2024 Period From: 1 To: 12

		Curr. Month Total Expended	Original Budget	YTD Adjusted Budget	YTD Actual Expended	YTD Unexpended Balance	YTD Encumbered	YTD Available Balance	Percent Exp. Balance
Fund 0004	HIGHWAY WHOLE TOWN FUND								
Dept 9050	UNEMPLOYMENT INSURANCE								
Total Dept 9050	UNEMPLOYMENT INSURANCE	0.00	2,500.00	2,500.00	0.00	2,500.00	0.00	2,500.00	0.00
Dept 9055	DISABILITY INSURANCE								
0008	EMPLOYEE BENEFITS	99.24	2,545.00	2,545.00	99.24	2,445.76	0.00	2,445.76	3.90
Total Dept 9055	DISABILITY INSURANCE	99.24	2,545.00	2,545.00	99.24	2,445.76	0.00	2,445.76	3.90
Dept 9060	HOSPITALIZATION								
0008	EMPLOYEE BENEFITS	35,117.68	436,000.00	436,000.00	35,117.68	400,882.32	0.00	400,882.32	8.05
Total Dept 9060	HOSPITALIZATION	35,117.68	436,000.00	436,000.00	35,117.68	400,882.32	0.00	400,882.32	8.05
Dept 9089	MISC. EMPLOYEE BENEFITS								
0008	EMPLOYEE BENEFITS	0.00	225.00	225.00	0.00	225.00	0.00	225.00	0.00
Total Dept 9089	MISC. EMPLOYEE BENEFITS	0.00	225.00	225.00	0.00	225.00	0.00	225.00	0.00
Total Fund 0004	HIGHWAY WHOLE TOWN FUND	168,174.43	2,721,548.00	3,542,891.66	168,174.43	3,374,717.23	747,917.58	2,626,799.65	4.75

TOWN OF PITTSFORD

Expense Control Report

Fiscal Year: 2024 Period From: 1 To: 12

		Curr. Month Total Expended	Original Budget	YTD Adjusted Budget	YTD Actual Expended	YTD Unexpended Balance	YTD Encumbered	YTD Available Balance	Percent Exp. Balance
Fund 0005	HIGHWAY PART TOWN FUND								
Dept 1989	UNCLASSIFIED								
0522		0.00	350,000.00	350,000.00	0.00	350,000.00	0.00	350,000.00	0.00
Total Dept 1989	UNCLASSIFIED	0.00	350,000.00	350,000.00	0.00	350,000.00	0.00	350,000.00	0.00
Dept 4560	PHYSICIAN								
0004	CONTRACTUAL & MISC. EXPENSE	0.00	2,600.00	2,600.00	0.00	2,600.00	0.00	2,600.00	0.00
Total Dept 4560	PHYSICIAN	0.00	2,600.00	2,600.00	0.00	2,600.00	0.00	2,600.00	0.00
Dept 5110	GENERAL REPAIRS								
0001	PERSONAL SERVICES	0.00	1,755,504.00	1,755,504.00	0.00	1,755,504.00	0.00	1,755,504.00	0.00
0004	CONTRACTUAL & MISC. EXPENSE	21,950.55	1,064,848.00	1,179,514.00	21,950.55	1,157,563.45	96,756.00	1,060,807.45	1.86
Total Dept 5110	GENERAL REPAIRS	21,950.55	2,820,352.00	2,935,018.00	21,950.55	2,913,067.45	96,756.00	2,816,311.45	0.75
Dept 5112	IMPROVEMENTS								
0002	EQUIPMENT & CAPITAL OUTLAY	0.00	273,000.00	337,078.52	0.00	337,078.52	64,078.52	273,000.00	0.00
Total Dept 5112	IMPROVEMENTS	0.00	273,000.00	337,078.52	0.00	337,078.52	64,078.52	273,000.00	0.00
Dept 9010	STATE RETIREMENT								
0008	EMPLOYEE BENEFITS	0.00	175,000.00	175,000.00	0.00	175,000.00	0.00	175,000.00	0.00
Total Dept 9010	STATE RETIREMENT	0.00	175,000.00	175,000.00	0.00	175,000.00	0.00	175,000.00	0.00
Dept 9030	SOCIAL SECURITY								
0008	EMPLOYEE BENEFITS	0.00	135,000.00	135,000.00	0.00	135,000.00	0.00	135,000.00	0.00
Total Dept 9030	SOCIAL SECURITY	0.00	135,000.00	135,000.00	0.00	135,000.00	0.00	135,000.00	0.00
Dept 9040	WORKERS COMPENSATION								
0008	EMPLOYEE BENEFITS	135,751.07	185,000.00	185,000.00	135,751.07	49,248.93	0.00	49,248.93	73.38
Total Dept 9040	WORKERS COMPENSATION	135,751.07	185,000.00	185,000.00	135,751.07	49,248.93	0.00	49,248.93	73.38
Dept 9045	LIFE INSURANCE								
0008	EMPLOYEE BENEFITS	52.70	1,000.00	1,000.00	52.70	947.30	0.00	947.30	5.27
Total Dept 9045	LIFE INSURANCE	52.70	1,000.00	1,000.00	52.70	947.30	0.00	947.30	5.27
Dept 9050	UNEMPLOYMENT INSURANCE								
0008	EMPLOYEE BENEFITS	0.00	10,000.00	10,000.00	0.00	10,000.00	0.00	10,000.00	0.00
Total Dept 9050	UNEMPLOYMENT INSURANCE	0.00	10,000.00	10,000.00	0.00	10,000.00	0.00	10,000.00	0.00
Dept 9055	DISABILITY INSURANCE								
0008	EMPLOYEE BENEFITS	94.41	2,500.00	2,500.00	94.41	2,405.59	0.00	2,405.59	3.78
Total Dept 9055	DISABILITY INSURANCE	94.41	2,500.00	2,500.00	94.41	2,405.59	0.00	2,405.59	3.78
Dept 9060	HOSPITALIZATION								
0008	EMPLOYEE BENEFITS	39,419.45	500,000.00	500,000.00	39,419.45	460,580.55	0.00	460,580.55	7.88

TOWN OF PITTSFORD

Expense Control Report

Fiscal Year: 2024 Period From: 1 To: 12

		Curr. Month Total Expended	Original Budget	YTD Adjusted Budget	YTD Actual Expended	YTD Unexpended Balance	YTD Encumbered	YTD Available Balance	Percent Exp. Balance
Fund 0005	HIGHWAY PART TOWN FUND								
Dept 9060	HOSPITALIZATION								
Total Dept 9060	HOSPITALIZATION	39,419.45	500,000.00	500,000.00	39,419.45	460,580.55	0.00	460,580.55	7.88
Dept 9089	MISC. EMPLOYEE BENEFITS								
0008	EMPLOYEE BENEFITS	0.00	325.00	325.00	0.00	325.00	0.00	325.00	0.00
Total Dept 9089	MISC. EMPLOYEE BENEFITS	0.00	325.00	325.00	0.00	325.00	0.00	325.00	0.00
Total Fund 0005	HIGHWAY PART TOWN FUND	197,268.18	4,454,777.00	4,633,521.52	197,268.18	4,436,253.34	160,834.52	4,275,418.82	4.26
Grand Total		664,480.64	22,095,027.00	23,604,015.73	664,480.64	22,939,535.09	1,442,917.78	21,496,617.31	2.82

NOTE: One or more accounts may not be printed due to Account Table restrictions.

TOWN OF PITTSFORD

Revenue Control Report

Fiscal Year: 2024 Period From: 1 To: 12

		Curr. Month Revenue Receipts	Curr. Month Budget Balance	Original Budget	YTD Adjusted Budget	YTD Revenue Receipts	YTD Budget Balance	Percent Received Balance
Fund 0001	GENERAL FUND							
Item 1001	REAL PROPERTY TAXES	0.00	6,488,498.00	6,488,498.00	6,488,498.00	0.00	6,488,498.00	0.00
Item 1081	OTHER PYMT IN LIEU OF TAXES	0.00	2,500.00	2,500.00	2,500.00	0.00	2,500.00	0.00
Item 1090	INTEREST & PENALTY ON PROP TAX	0.00	140,000.00	140,000.00	140,000.00	0.00	140,000.00	0.00
Item 1170	FRANCHISES	0.00	390,000.00	390,000.00	390,000.00	0.00	390,000.00	0.00
Item 1232	TAX COLLECTOR FEES	0.00	1,800.00	1,800.00	1,800.00	0.00	1,800.00	0.00
Item 1255	CLERK FEES	0.00	3,500.00	3,500.00	3,500.00	0.00	3,500.00	0.00
Item 1550	DOG WARDEN FEES	0.00	200.00	200.00	200.00	0.00	200.00	0.00
Item 2001	CULTURE & RECREATION FEES	118,598.00	772,802.00	891,400.00	891,400.00	118,598.00	772,802.00	13.30
Item 2228	GIS CHARGES, OTHER GOV'T	0.00	14,000.00	14,000.00	14,000.00	0.00	14,000.00	0.00
Item 2350	YOUTH SER/OTHER GOV'T.	0.00	7,000.00	7,000.00	7,000.00	0.00	7,000.00	0.00
Item 2351	PROGRAMS FOR AGING - OTHER GOV'T	0.00	45,000.00	45,000.00	45,000.00	0.00	45,000.00	0.00
Item 2401	INTEREST & EARNINGS	0.00	150,000.00	150,000.00	150,000.00	0.00	150,000.00	0.00
Item 2410	RENTAL OF LAND	6,295.00	182,205.00	188,500.00	188,500.00	6,295.00	182,205.00	3.34
Item 2411	FIELD USE FEES	60.00	10,040.00	10,100.00	10,100.00	60.00	10,040.00	0.59
Item 2450	COMMISSIONS	0.00	900.00	900.00	900.00	0.00	900.00	0.00
Item 2544	DOG LICENSES	0.00	14,000.00	14,000.00	14,000.00	0.00	14,000.00	0.00
Item 2560	STREET OPENING PERMITS	0.00	2,500.00	2,500.00	2,500.00	0.00	2,500.00	0.00
Item 2590	PERMITS	0.00	9,900.00	9,900.00	9,900.00	0.00	9,900.00	0.00
Item 2610	FINES & FORFEITED BAIL	0.00	35,000.00	35,000.00	35,000.00	0.00	35,000.00	0.00
Item 2665	SALE OF EQUIPMENT	0.00	250.00	250.00	250.00	0.00	250.00	0.00
Item 2701	REFUND OF PRIOR YEAR EXP.	0.00	500.00	500.00	500.00	0.00	500.00	0.00
Item 2705	GIFTS & DONATIONS	0.00	21,000.00	21,000.00	21,000.00	0.00	21,000.00	0.00
Item 2770	OTHER UNCLASSIFIED REVENUES	297.90	15,702.10	16,000.00	16,000.00	297.90	15,702.10	1.86
Item 2801	INTERFUND REVENUES	0.00	35,000.00	35,000.00	35,000.00	0.00	35,000.00	0.00
Item 3001	STATE AID PER CAPITA	0.00	108,081.00	108,081.00	108,081.00	0.00	108,081.00	0.00
Item 3005	MORTGAGE TAX	0.00	925,000.00	925,000.00	925,000.00	0.00	925,000.00	0.00
Item 5031	INTERFUND TRANSFERS	0.00	350,000.00	350,000.00	350,000.00	0.00	350,000.00	0.00
Item 5999	APPROP FD BALANCE	0.00	1,700,000.00	1,700,000.00	1,700,000.00	0.00	1,700,000.00	0.00
Total Fund 0001	GENERAL FUND	125,250.90	11,425,378.10	11,550,629.00	11,550,629.00	125,250.90	11,425,378.10	1.08

Date Prepared: 01/11/2024 03:58 PM

Report Date: 01/11/2024

Account Table: FUND 1-5

Alt. Sort Table:

TOWN OF PITTSFORD

Revenue Control Report

Fiscal Year: 2024 Period From: 1 To: 12

GLR0116 1.0

Page 2 of 5

Prepared By: BRIAN

		Curr. Month Revenue Receipts	Curr. Month Budget Balance	Original Budget	YTD Adjusted Budget	YTD Revenue Receipts	YTD Budget Balance	Percent Received Balance
Fund 0002	PART TOWN FUND							
Item 1001	REAL PROPERTY TAXES	0.00	170,808.00	170,808.00	170,808.00	0.00	170,808.00	0.00
Item 1120	SALES TAX	0.00	1,200,000.00	1,200,000.00	1,200,000.00	0.00	1,200,000.00	0.00
Item 1560	SAFETY INSPECTION FEES	0.00	20,000.00	20,000.00	20,000.00	0.00	20,000.00	0.00
Item 1570	DEMOLITION PERMITS	0.00	500.00	500.00	500.00	0.00	500.00	0.00
Item 2110	ZONING FEES	0.00	2,500.00	2,500.00	2,500.00	0.00	2,500.00	0.00
Item 2115	PLANNING BOARD FEES	0.00	8,000.00	8,000.00	8,000.00	0.00	8,000.00	0.00
Item 2401	INTEREST & EARNINGS	0.00	35,000.00	35,000.00	35,000.00	0.00	35,000.00	0.00
Item 2545	LICENSES, OTHER	0.00	3,000.00	3,000.00	3,000.00	0.00	3,000.00	0.00
Item 2550	PERMITS - CERT. OF OCCUPANCY	0.00	4,000.00	4,000.00	4,000.00	0.00	4,000.00	0.00
Item 2555	BUILDING & ALTERATION PERMITS	0.00	91,000.00	91,000.00	91,000.00	0.00	91,000.00	0.00
Item 2590	PERMITS	0.00	3,300.00	3,300.00	3,300.00	0.00	3,300.00	0.00
Item 2591	FIRE ALARM PERMITS	0.00	500.00	500.00	500.00	0.00	500.00	0.00
Item 5999	APPROP FD BALANCE	0.00	153,500.00	153,500.00	153,500.00	0.00	153,500.00	0.00
Total Fund 0002	PART TOWN FUND	0.00	1,692,108.00	1,692,108.00	1,692,108.00	0.00	1,692,108.00	0.00

Date Prepared: 01/11/2024 03:58 PM

Report Date: 01/11/2024

Account Table: FUND 1-5

Alt. Sort Table:

TOWN OF PITTSFORD

Revenue Control Report

Fiscal Year: 2024 Period From: 1 To: 12

GLR0116 1.0

Page 3 of 5

Prepared By: BRIAN

		Curr. Month Revenue Receipts	Curr. Month Budget Balance	Original Budget	YTD Adjusted Budget	YTD Revenue Receipts	YTD Budget Balance	Percent Received Balance
Fund 0003	LIBRARY FUND							
Item 1001	REAL PROPERTY TAXES	0.00	1,417,365.00	1,417,365.00	1,417,365.00	0.00	1,417,365.00	0.00
Item 2081	COLLECTION FEES	0.00	500.00	500.00	500.00	0.00	500.00	0.00
Item 2082	LIBRARY FINES	183.52	27,816.48	28,000.00	28,000.00	183.52	27,816.48	0.66
Item 2083	PRINTING REVENUE	0.00	3,600.00	3,600.00	3,600.00	0.00	3,600.00	0.00
Item 2401	INTEREST & EARNINGS	0.00	20,000.00	20,000.00	20,000.00	0.00	20,000.00	0.00
Item 2760	SYSTEM GRANTS	0.00	6,500.00	6,500.00	6,500.00	0.00	6,500.00	0.00
Item 5999	APPROP FD BALANCE	0.00	200,000.00	200,000.00	200,000.00	0.00	200,000.00	0.00
Total Fund 0003	LIBRARY FUND	183.52	1,675,781.48	1,675,965.00	1,675,965.00	183.52	1,675,781.48	0.01

Date Prepared: 01/11/2024 03:58 PM

Report Date: 01/11/2024

Account Table: FUND 1-5

Alt. Sort Table:

TOWN OF PITTSFORD

Revenue Control Report

Fiscal Year: 2024 Period From: 1 To: 12

GLR0116 1.0

Page 4 of 5

Prepared By: BRIAN

		Curr. Month Revenue Receipts	Curr. Month Budget Balance	Original Budget	YTD Adjusted Budget	YTD Revenue Receipts	YTD Budget Balance	Percent Received Balance
Fund 0004	HIGHWAY WHOLE TOWN FUND							
Item 1001	REAL PROPERTY TAXES	0.00	1,945,348.00	1,945,348.00	1,945,348.00	0.00	1,945,348.00	0.00
Item 2300	SERVICE - OTHER GOV'T.	0.00	394,000.00	394,000.00	394,000.00	0.00	394,000.00	0.00
Item 2401	INTEREST & EARNINGS	0.00	26,000.00	26,000.00	26,000.00	0.00	26,000.00	0.00
Item 2650	SALE OF SCRAP & EXCESS	0.00	1,000.00	1,000.00	1,000.00	0.00	1,000.00	0.00
Item 5999	APPROP FD BALANCE	0.00	355,200.00	355,200.00	355,200.00	0.00	355,200.00	0.00
Total Fund 0004	HIGHWAY WHOLE TOWN FUND	0.00	2,721,548.00	2,721,548.00	2,721,548.00	0.00	2,721,548.00	0.00

TOWN OF PITTSFORD

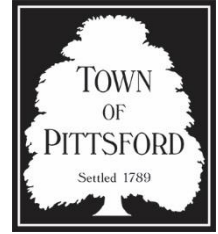
Revenue Control Report

Fiscal Year: 2024 Period From: 1 To: 12

		Curr. Month Revenue Receipts	Curr. Month Budget Balance	Original Budget	YTD Adjusted Budget	YTD Revenue Receipts	YTD Budget Balance	Percent Received Balance
Fund 0005	HIGHWAY PART TOWN FUND							
Item 1001	REAL PROPERTY TAXES	0.00	451,277.00	451,277.00	451,277.00	0.00	451,277.00	0.00
Item 1120	SALES TAX	0.00	2,950,000.00	2,950,000.00	2,950,000.00	0.00	2,950,000.00	0.00
Item 2401	INTEREST & EARNINGS	0.00	70,000.00	70,000.00	70,000.00	0.00	70,000.00	0.00
Item 3501	CHIPS PROGRAM	0.00	228,000.00	228,000.00	228,000.00	0.00	228,000.00	0.00
Item 5999	APPROP FD BALANCE	0.00	755,500.00	755,500.00	755,500.00	0.00	755,500.00	0.00
Total Fund 0005	HIGHWAY PART TOWN FUND	0.00	4,454,777.00	4,454,777.00	4,454,777.00	0.00	4,454,777.00	0.00
Grand Total		125,434.42	21,969,592.58	22,095,027.00	22,095,027.00	125,434.42	21,969,592.58	0.57

NOTE: One or more accounts may not be printed due to Account Table restrictions.

MEMORANDUM



To: Pittsford Town Board

From: Cheryl Fleming, Personnel Director

Date: January 10, 2024

Regarding: Recommendations for Hiring/Personnel Adjustments

For Meeting On: January 16, 2024

1. The following employee(s) are recommended as a new hire, subject to successful completion of drug and background checks, based on the recommendation of the Functional Coordinator(s) for these areas:

Name	Dept	Position	Rate	Date of Hire
Maureen Nix	DPW	Assistant to Commissioner	31.87	01/29/2024

This is subject to completion of the proper reviews and background checks for these candidates and appropriate sign off by the Town Board representative.

Name	Dept	Position	Rate	Date of Hire
Maureen Nix	DPW	Assistant to Commissioner	31.87	01/29/2024

2. The following employee is recommended for a status change and/or salary change due to a change in status.

Name	Position	Reason	Rate	Effective Date
Aidan Berdy	MEO III	Promo	\$24.13	01/15/2024

Should the Board approve the above recommendation and personnel adjustment, the following resolution is being proposed, RESOLVED, that the Town Board approves the appointment for the following employee(s):

Name	Position	Reason	Rate	Effective Date
Aidan Berdy	MEO III	Promo	\$24.13	01/15/2024