

From the Supervisor

The Supervisor's Town Budget for 2023

2023 Budget Holds Town Tax Rate Flat

Have you bought a dozen eggs recently? How about a pound of hamburger? Have you considered taking out a mortgage for a couple of pizzas with wings?

If it's any consolation, here's one thing that has **not** gone up: Pittsford's Town tax rate.

Among my most important duties as Town Supervisor is to prepare the Town budget for each year and submit it to the Town Board.

By unanimous vote the Town Board approved my proposed budget for 2023.

The 2023 budget holds the Town tax rate flat, with no increase. The rate therefore remains, following last year's tax cut, at \$3.13 per thousand dollars of assessed value. This notwithstanding the 8.2% increase in inflation over the past year. Taking into account the new budget, cumulatively we have cut the Town tax rate by more than 9% since 2018.

The budget keeps Town tax proportionally low. For a number of years Town taxes comprised just nine cents (\$0.09) of every dollar in property tax you pay as a Pittsford resident. In my budget for 2022 that dropped to eight cents. It remains the same. In 2023, for every dollar of property tax you pay, just eight cents (\$0.08) will be Town of Pittsford tax.

Continued on page 2



Bill Smith
Town Supervisor

Inside:

- Budget 2023 Highlights
- Refuse District Enrollment
- Canal Trees Update
- Emergency Closures
- PGA Championship in May
- Teen Volunteer Opportunities
- NYS Barn Tax Credit Program
- Senior Center Director Honored
- Hit the Trails this Winter
- Ron Anderson Room Dedicated
- Winter Safety Tips

Tax Notice for Seniors Age 65 and Older

*Tax bill reduction possible
for those who qualify*

If you will be **65 years of age or older by December 31, 2023** and your **2021 Gross Income is less than \$58,400** you may be eligible for an exemption which could reduce your **future** tax bills.

When determining your gross income, please remember to include your total salary and wages; total social security; total pension or retirement payments; interest; dividends; interest from estates or trusts; disability payments; worker's compensation; earnings on IRAs; alimony; annuity payments representing a return on capital; and unemployment payments. **The filing deadline is March 1, 2023.**

If you think you may qualify, you can find the Partial Tax Exemption For Seniors form (RP-467) application and instructions on the Assessor's web page of the Town of Pittsford website at www.townofpittsford.org/assessor. If you have further questions, please contact the Town Assessor's office at **248-6222** by March 1, 2023.



PGA Championship here in May

The PGA Championship - one of golf's major events - is coming to Pittsford this May! The tournament is May 15 - 21 at Oak Hill Country Club. It's an exciting opportunity to show thousands of visitors all that Pittsford has to offer. We're working with the PGA, the Pittsford Chamber of Commerce, local businesses and community partners to schedule activities celebrating Pittsford and the PGA during the event. Stay tuned for details.



From the Supervisor

Continued from front page

Quality Services Remain Intact

The 2023 budget maintains all municipal services at existing levels and better.

It maintains our stepped-up program of repaving residential neighborhood streets. It fully funds Pittsford Youth Services' budget request for next year. Cumulatively, the Town has increased its funding of Pittsford Youth Services by 83% since 2017 – and that does not count the \$39,400 in ARPA funds we provided PYS earlier in 2022. The budget holds flat the Town's funding for Pittsford Volunteer Ambulance, following a cumulative increase for PVA of 114% since 2018, as of the budget for 2022.

Again the State has raised the minimum wage. Again it has a cascading effect throughout our wage scales. In the 2023 budget, hourly employees subject to the wage scale received an increase equal to the higher of their next step in the wage scale or 4%. All other non-elected employees received an increase of the higher of merit raise awards or a 4% cost-of-living adjustment. There was no increase in compensation for any elected official.

The 2023 budget maintains full funding for senior citizens' programs and services, including lunch and nutrition programs. It funds our full schedule of recreation programs, including youth programs; also our full schedule of Town events, which we've expanded from pre-pandemic days.

Committed Fiscal Management

Our taxpayers continue to save money because the Town maintains its credit rating. The Town of Pittsford has the highest credit rating possible – Triple-A. This is more than a report card on municipal fiscal management. It protects taxpayers by keeping down the rate of interest we pay on Town bonds, for such things as the Greenprint, the renovations to our Spiegel Community Center, the Library and our improvements to athletic fields and parks.

Pittsford remains the only town of its size in the United States to hold this perfect credit rating. We're the only town in New York north of Westchester and Putnam counties to have it. Consequently, Pittsford residents continue to pay less for bond financing of municipal improvements than residents of any other place in upstate New York – and any other place of our size in the country.

Pittsford has the 7th lowest town tax rate among the 18 towns in Monroe County, as it had last year. If you exclude from the comparison those towns that receive revenue from landfills, and those with commercial areas much more extensive and intensive than Pittsford's, we're the 5th lowest. This despite Pittsford's full schedule of municipal services that none of the lower-taxed towns offer, such as weekly leaf pickup, yard debris pickup, a robust recreation program and a Town-financed library.

Pittsford taxpayers continue to benefit from the forward-thinking of the Town administration and its predecessors. The Finger Lakes Municipal Healthcare Trust – a statewide

Continued on page 3

Budget 2023 Highlights

- **No tax increase**
- **Rate stays flat, at \$3.13 per thousand dollars.** Cumulatively since 2018, more than a **9% cut in the tax rate**
- **Increased funding for Pedestrian Safety** improvements and steps to reduce speeding
- Full support for **Pittsford Community Library**
- More funding for continuing maintenance of Town **Parks and Facilities**
- Continues **Environmental initiatives**
- **Community Events** and Recreation Programs
- Funds **Paddle & Pour** and the **Food Truck & Music Fest**
- Supports **Pittsford Volunteer Ambulance**
- Supports **Elderberry Express**
- Funds **Lunch Program** for Seniors
- Full funding for **Pittsford Youth Services** per its request
- Funds **stormwater drainage project**
- Funds the **7.5% increase in medical costs**
- Funds the **2% increase in Dental Plan costs**
- **No increase** in compensation for Supervisor, Town Board, Town Judges

2023 Pittsford Town Budget

Bill Smith | Pittsford Town Supervisor

- ✓ No Tax Increase
- ✓ Keeps up with Rising Costs
- ✓ Supports Neighborhoods
- ✓ Maintains Full Services
- ✓ Sustainable

Winter Safety Tips

Fire and Heating Safety

As temperatures drop, our use of fireplaces, space heaters, wood stoves, radiators and other heating devices goes up. **During winter, most home fires are started by heating equipment.** Following **a few simple rules** can help keep you safe this winter.

- Install and test smoke detectors and carbon monoxide detectors.
- Keep anything that can burn at least three feet from any heat source (fireplaces, wood stoves, radiators or space heaters, etc.).
- Plug all heating devices directly into wall outlets – never use a power strip or extension cord. To reduce the risk of overheating, don't plug any other electrical device into the same outlet.
- Store cooled ashes from a fireplace or wood stove in a tightly covered metal container and keep it outside away from structures. Never store ashes in your house or garage.
- Have a qualified professional clean and inspect your chimney and vents.
- Always use a screen in front of wood-burning fireplaces.

Please remember that **coals and ashes from fires can remain hot enough to start a fire for days after the fire appears to be out.**

To be safe, treat all ashes and coals as hot when disposing of them.

Winter is a great time for enjoying your fireplace, wood stove, space heaters and the like. Just remember to be safe and dispose of your ash and coals wisely!

Don't Crowd the Plow

When the snow flies our crews get out on the roads to plow. If you're on the road, please give our plows plenty of room to work. The road behind an active plow truck is safer to drive on, so driving an appropriate amount of space behind a plow may be your best option, especially during heavy snows. If you must pass, please only pass when it is safe to do so. If conditions get severe, consider staying off the roads entirely, and always do so if a travel ban or state of emergency is declared.

A Snow-Free Car Keeps the Roads Safer for All

On a cold morning after a heavy snowfall or as you get ready to head home after a snowy day, it may be tempting to skip cleaning off your vehicle before you get on the road. But doing so can be quite dangerous to you and to others. It could even get you a traffic ticket. Snow blowing from your car can cause a blinding effect to those behind you on the road. Blocked taillights or headlights can cause accidents. Frozen rooftop snow can be dangerous to those behind you. It can slide forward to block your view. Please help keep the road safe for yourself and others this winter by clearing the snow off your vehicle before you drive.



Clear Hydrants = Faster Emergency Response

If there's a fire hydrant on your property, you can help our firefighters by keeping it clear this winter. Maintaining a 3-foot clearing around it is essential. Clearing a path from the hydrant to the street is also very helpful. In an emergency, every second counts, so quick access is vital.

From the Supervisor

Continued from page 2

model for shared services, initiated by the Town of Pittsford – continues to save the Town substantial additional expense every year. As a result, the increase in medical costs is confined to 7.5% for this year, rather than a multiple of that.

Here to Serve You

The 2023 budget reflects my Town administration's commitment to responsiveness to residents, keeping neighborhoods strong, to services of importance to youth and seniors, and to continual improvement across the Town. We continue to build on Pittsford's solid legacy of decades of enlightened and responsible budgetary practices that protect taxpayers.

My thanks to Finance Director Brian Luke and our Town Department Heads for their work and recommendations in preparing this budget. My thanks to you, our residents, for your suggestions – they helped shape the priorities and

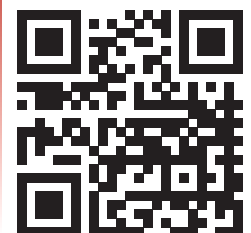
improvements funded by this year's budget.

In the year ahead we'll continue to improve our services and infrastructure with you, our residents, in mind. We strive to provide you the very best while protecting your financial interests as taxpayers. To do so, I need to hear from you – how can Town government serve you best? My office door is open and I answer my own phone. You can contact me at **248-6220** or by email at wsmith@townofpittsford.org.



eNews
Signup

Stay up to date on Town meetings,
projects, programs, services and events –
sign up for our weekly eNews.



[townofpittsford.org/enews](https://www.townofpittsford.org/enews)

Supervisor's Update on Canal Trees

Pittsford, and the other communities affected by the State Power Authority's proposal to cut trees along the Erie Canal, now await publication of the Power Authority's "findings." The findings must consider environmental impacts of the proposed action in light of social, economic and other impacts. They must include a rationale for the Authority's decision and must certify that, to the maximum extent practicable, its proposal mitigates adverse environmental impacts. Publication of its findings represents the next step in the legally-mandated procedure for the Authority to proceed with its program.

The Power Authority has released its Final Generic Environmental Impact Statement for its plan, which it calls the Earthen Embankment Integrity Program. It also has released its Final Guidebook detailing how it will carry out the project. You can see these documents at www.canals.ny.gov.

These documents provide that the State may clear-cut trees two-thirds of the way up any embankment without prior notice or consultation with the Town. The documents provide that the Power Authority then would consult with the Town about trees remaining on the top one-third of the embankment and at the crest.

The Town's position is (1) that the State should consult with the Town before doing **any** cutting on the Canal, and (2) the Town must share in decision-making authority over what gets cut and where. To date the Power Authority has rejected both propositions.

Because Pittsford has in place a Local Waterfront Redevelopment Program, the Power Authority must make a finding that its tree-cutting project is consistent to the maximum extent practicable with the Town's Waterfront Program.

I've conferred with Supervisors of the other towns involved, with the Town Attorney and with the County Executive.

We acknowledge that the State's current proposal provides a substantially greater voice for municipalities in the decision and review process, in circumstances where proposed removal of vegetation would be deemed to have a significant impact on the community. Yet it offers nothing more than that – a voice – that the State may affirm or ignore, as it pleases.

We're unaware of any breach of an embankment in the Canal's 200-year history caused by tree growth or vegetation. The Power Authority has not attributed any embankment breach to trees.

We're on it. The Town is fully prepared to assert its rights and defend its position as this matter proceeds.



Seniors Director Dolores DeCoste Honored

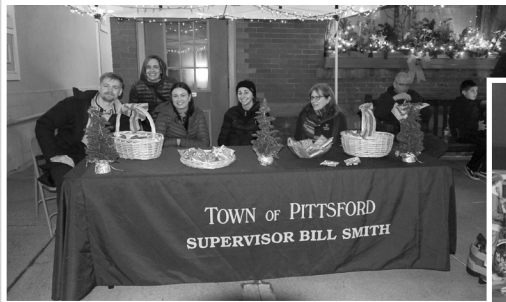
Congratulations to our Senior Center Director Dolores DeCoste. Recently the Genesee Valley Recreation and Park Society awarded her its Outstanding Service Award for 2022. Dolores's contributions to the quality of life and enjoyment for so many of Pittsford's seniors have been numerous. The GVRPS recognized what we've known all along. While overseeing daily operations, lunch and fitness programs, social activities, parties, outings and much more, Delores has built personal friendships with all participants in our seniors programs. For creating a caring, positive, supportive and welcoming experience for our seniors and her staff, Delores sets a standard we all admire. Thank you, Delores, and congratulations.

*Community Center Director Jessie Hollenbeck
and GVRPS Outstanding Service Award winner
Dolores DeCoste, our Senior Center Director.*



Holiday Celebrations!

There was plenty of celebrating in December. Town staff were on hand to greet attendees at the annual Chamber of Commerce Candlelight Night festivities, which included lighting the town Christmas tree, carolers, horse-drawn wagon rides, treats, music, and more. Our friends at Chabad of Pittsford welcomed the community at this year's town Menorah Lighting and Chanukah Celebration on December 19 - an annual community event complete with music, food and a dazzling fire-and-ice menorah lighting!



A fun time at the Chamber of Commerce's Candlelight Night!



*Fire and Ice at the Chabad of Pittsford Community Menorah Lighting & Chanukah celebration!
Photo credit: Gene Avallone, Chabad of Pittsford*

Wreaths Honor Our Veterans

In honor and remembrance of our veterans, the Women's Club of Pittsford and Rayson-Miller American Legion Post 899 hosted Pittsford's 7th annual Wreaths Across America ceremony in December at the Pittsford Veterans Monument in Carpenter Park.



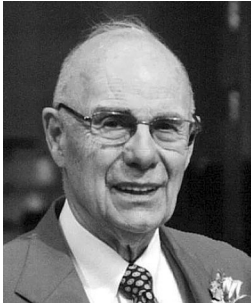
Good News for Barn Owners – NYS Barn Rehabilitation Tax Credit Program

New York State now offers a Historic Barn Rehabilitation Tax Credit. The program provides an incentive, in the form of a credit against State income tax, to rehabilitate these symbols of our agricultural heritage. Eligible barns include those built before 1946, or that are on a property listed in the State or National Register of Historic Places. Barns also must have been used previously in agriculture or a related purpose. As a community that within living memory was substantially agricultural, Pittsford is dotted with barns that may benefit from this program. Find more information about program qualifications and application procedures at www.parks.ny.gov/shpo/tax-credit-programs.



Seniors Activity Room Named for Ron Anderson

Longtime Pittsford resident advocated for seniors



On September 29, 2022, the Town of Pittsford dedicated the Ronald C. Anderson Activity Room at the Spiegel Community Center.

A longtime Pittsford resident and advocate for Pittsford’s seniors, Ron Anderson was an enthusiastic participant and supporter of the Town’s Seniors programs and services. He served on the Citizens’ Advisory Committee for renovation

of the Spiegel Community Center, lending valuable insight and guidance both for infrastructure and programming. The results of his recommendations are many and tangible. Altogether they represent a major factor in the success of our renovated Community Center.

A longtime community volunteer, Ron served on the Town’s Parks and Recreation Advisory Board and drove for Pittsford’s senior transportation service, the Elderberry Express. He volunteered as both a coach and team manager for Pittsford Little League.

The Ronald C. Anderson Activity Room offers a comfortable and convenient place for seniors to play cards and games, relax with friends, read, or – one of Ron’s favorite activities – work on a puzzle.

With Ron’s death in September 2021, the Town of Pittsford lost a dedicated advocate for seniors, a caring volunteer and a good friend. His benevolent influence on our community lives on in his accomplishments and in the many lives he touched.

Join Us for Senior Movie Matinees

Seniors can enjoy a morning movie matinee in the Van Huysen Community Room at the Spiegel Community Center. Our Senior Movie Matinees include coffee, breakfast pastries – and popcorn, of course! Pizza is served after the movie. Our Senior Movie Matinees are offered once a month at 10:30am on a Thursday. The movies are free but advance registration is required. Find our current movie listing on the Town website at www.townofpittsford.org/seniors-senior-movie-matinees. Or call the Senior Programs office at **248-6235** for information and to register.

Find more information about all our programs, activities and services for seniors on our Seniors web page at www.townofpittsford.org/seniors.



Farewell and Many Thanks to Julie Donnelly and Joy Brown

Julie Donnelly retired after 20 years of serving the people of Pittsford as Recreation Department Office Clerk. Julie’s sincere commitment to serving the public made reserving or renting Town facilities an easy process for Pittsford residents and a friendly one. Her delightful home-cooked lunches were a highlight of our seniors programs!

Joy Brown, our Director of Information Technology Services, retired after 21 years of service to the Town. Joy led our IT Department through many changes in technology, with all the challenges and upgrades along the way. Throughout every Town department, Joy’s perceptive and creative problem-solving ability was respected and admired by all; so was her patience and perseverance. Joy’s extensive knowledge, her technical skills and managerial skills as department head served the people of Pittsford exceptionally.

Many thanks, Julie and Joy, for your dedication to our community and our residents. We miss you both. We wish you well!



Supervisor Bill Smith presented Julie Donnelly with her retirement commendation from the Town Board.



Joy Brown, joined by her wife Cheryl Barr at left, with her retirement commendation from the Town Board.

Refuse Districts for Lower Cost, Less Traffic – Enrollment Under Way Through April 30

The Town of Pittsford’s Refuse District program lets residents reduce their cost for trash collection and recycling. Creating a district reduces garbage truck traffic in the neighborhood to one truck, once a week. A Refuse District is a designated area in which a single collector serves all households. The district boundaries are determined by the people who live there. The Town solicits bids and negotiates a contract that covers all Town refuse districts. Residents in a district no longer pay the waste hauler directly, but pay through the Town as a Refuse District charge on the tax bill. So far, the program has resulted in reduced costs to residents in the districts, often substantially.

To date, 24 neighborhoods have organized refuse districts. A typical district consists of a group of adjoining streets.

All that’s necessary to create a district is to come up with the parameters of a new district that you and others in your neighborhood can agree on. You’ll then have to collect signed petitions from residents representing at least 50% of the aggregate assessed value of the proposed district. The Town helps by preparing the petitions for you and providing notary services for petition-signing.

The period for creating a refuse district runs from January 1 - April 30 of each year. Neighborhoods obtaining enough petitions see service begin the following January 1. To learn more about forming a refuse district in your neighborhood, visit www.townofpittsford.org/refuse-districts.

Explore Town Trails this Winter with Passport Program

Winter is a beautiful time to explore our Town trails – and you may win a prize for doing so! Our *Hit the Trails Passport* program is a partnership with Wegmans and includes eight Pittsford trails of various lengths and degrees of difficulty. Hike or cycle six of the designated trails and receive a Wegmans reusable shopping bag. Complete all eight trails and you’re eligible to win a \$250 Wegmans gift card. Program information and passports are available at the Spiegel Community Center (35 Lincoln Avenue).



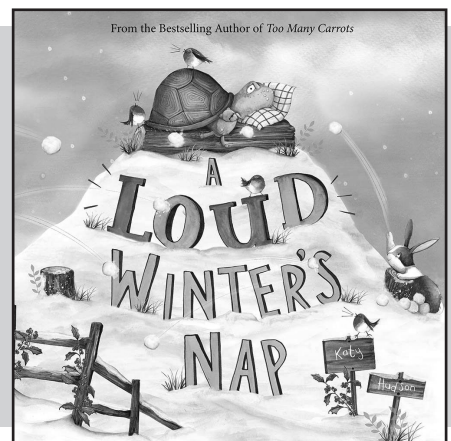
Seasonal Parking Rules in Effect Through April 1

To facilitate snow removal, Town of Pittsford seasonal parking rules are currently in effect. They continue through April 1, 2023. Parking any vehicle on public roads – including state highways and on the shoulder of all roads – is prohibited each year from November 15 through April 1 in all areas within the Town and outside of the Village. During this time, please don’t park on or along public roads outside of the Village. Violators may be ticketed or towed.

When the snow flies, we need roadsides clear of vehicles so our plows can make it through. This is especially true in neighborhoods with narrower streets. Please help us keep our streets safe and accessible this winter!

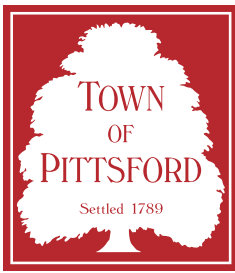
Take a Story Stroll at the Community Center

For every season our Recreation team selects stories that families can read together as they walk outdoors – even in winter! **Story Strolls** take place in the field behind the Spiegel Community Center. Walk through at your own pace and enjoy a fun family story posted on signs along the way. Then, stop at the Community Center front desk and pick up a themed craft pack to take home! Craft packs are available Monday through Saturday from 8:00am–5:00pm and Sunday from 10:00am–5:00pm. **Our next Story Stroll takes place February 6–12** (Monday through Sunday) and features “A Loud Winter’s Nap.” And save the date for our “Little Raindrop” Story Stroll – it takes place March 13–19. Stop by, take a stroll, enjoy a wonderful story and take home a fun craft!



Emergency Closings Information

In case of major weather events or other emergencies, information about facility closings and program or event cancellations will be announced on the Town's website www.townofpittsford.org, on the Town of Pittsford’s Facebook page and its Twitter feed [@pittsfordtown](https://twitter.com/pittsfordtown). You can also check on local television and radio stations and Pittsford's Cable TV 12 Channel 1303 government access station. TV-12 Channel 1303 announcements can be viewed live any time on the TV-12 Channel 1303 page that you’ll find on the Town’s website.



11 South Main Street
Pittsford, New York 14534
(585) 248-6200

Supervisor

William A. Smith, Jr.

Town Board

Kate Bohne Munzinger
Deputy Town Supervisor
Cathleen A. Koshykar
Kim Taylor
Stephanie M. Townsend

GO SOCIAL WITH THE TOWN OF PITTSFORD!

Stay up to date by following the Town of Pittsford on social media. You can find us on:



Sweetheart Dance is February 10

The Pittsford Recreation Department's annual Sweetheart Dance is Friday, February 10 from 6:30 - 9:00pm at the Spiegel Community Center. Registration is now under way. Children ages 5-13, accompanied by an adult, can dance the night away at this memorable evening full of music, refreshments and fun activities. Don't miss out on this special night! Cost is \$20 per person. To register online, visit www.townofpittsford.org/recreation, use the Program Info & Registration link, and select the Family and Youth programs section. Or stop by our Spiegel Community Center to register in person. The Community Center is located at 35 Lincoln Avenue.



Teens and Tweens Can Volunteer at the Library

Tweens and teens, if you need to earn some community service credit, the Pittsford Community Library is a great place to do it! Students in grades 6-12 can **earn community service credit** while volunteering at the Library during designated hours. We even offer opportunities to do it online. As another way to get involved, students in grades 9-12 can become **Teen Program Assistants**. TPAs help at events and activities like bingo, table-top and fandom games, movies, crafting, tie-dying, computer assistance and more. If you're in a grade from 9 - 12 you also have the chance to volunteer as a **Book Buddy**, helping children in grades 1-3 practice their reading skills. Whether you need to earn community service or just want to have fun while helping others, you can do both at the Library.

For volunteer information and to register, check the online program calendar under the Events tab at www.townofpittsford.org/library or visit www.townofpittsford.org/library/teens. The Pittsford Community Library is located at 24 State Street.

